

Studies of $\alpha 11\beta 1$ integrin in the mouse and human periodontal ligament

Malgorzata M. Barczyk



Dissertation for the degree philosophiae doctor (PhD)
at the University of Bergen, Norway

April 2009

Table of Contents

Acknowledgements	5
List of papers	7
Abbreviations	9
Introduction	11
1. Cell-extracellular matrix interactions	11
1.1. Extracellular matrix	11
1.2. Cell-ECM interactions	12
1.2.1. Integrins	12
1.2.2. Integrin structure	12
1.2.3. The collagen-binding integrins	14
1.2.4. Integrin $\alpha 11\beta 1$	15
1.2.4.1. Identification of the $\alpha 11\beta 1$ integrin	16
1.2.4.2. $\alpha 11$ integrin gene and $\alpha 11$ promoter region	16
1.2.4.3. <i>ITGA11</i> regulation	17
1.2.4.4. Expression and ligands of the $\alpha 11\beta 1$ integrin	18
1.2.4.5. $\alpha 11\beta 1$ integrin function	18
2. Matrix metalloproteinases	19
2.1. The matrix metalloproteinase family	19
2.2. Matrix metalloproteinases cleaving native collagens	20
2.2.1. MMP-13	21
2.3. Integrin-ECM-MMP interactions	22
2.3.1. Directed proteolysis via interactions with integrins	23
2.3.2. Integrin-mediated synthesis of MMPs	23
2.4. The MMPs during collagen remodeling	23
3. The periodontal ligament	24
3.1. The composition and the cells of the periodontal tissues	24
3.2. Integrin-ECM interactions in the PDL	27
3.3. Matrix metalloproteinases in the PDL	28
3.4. Periodontal disease	29
Aims of the present study	32
Results	33
1. $\alpha 11\beta 1$ integrin-dependent regulation of periodontal ligament function in the erupting mouse incisor (Paper I)	33
1.1. Generation of an integrin $\alpha 11$ -deficient mouse strain	33
1.2. The skeletal system of the $\alpha 11$ -deficient mice	33
1.3. Tooth phenotype of $\alpha 11$ -deficient mice	34
1.4. <i>In situ</i> localization of $\alpha 11$ RNA and immunohistochemical analysis of $\alpha 11$ protein in the PDL	34
1.5. <i>In vitro</i> phenotype of $\alpha 11$ -deficient mouse embryonic fibroblasts	35
2. $\alpha 11\beta 1$ integrin-mediated collagen lattice contraction by incisor periodontal ligament fibroblasts requires MMP-13 (Paper II)	35
2.1. Isolation of incisor PDL fibroblasts	36
2.2. Characterization of incisor PDL fibroblasts	36
2.3. Functional analysis of $\alpha 11\beta 1$ integrin in incisor PDL fibroblasts	37
2.4. $\alpha 11\beta 1$ regulates MMP-13 levels inside a 3D collagen gel	37
2.5. $\alpha 11\beta 1$ -mediated collagen reorganization in part depends on MMP-13	38
3. A role for $\alpha 11\beta 1$ integrin in the human periodontal ligament (Paper III)	39
3.1. The repertoire of collagen-binding integrins in human PDL and gingival fibroblasts	39

3.2. $\alpha 11\beta 1$ -mediated collagen gel contraction is enhanced by IGF-II	39
3.3. The repertoire of collagen-binding integrins in healthy and diseased PDL tissue	40
3.4. Sequence analysis of the <i>ITGA11</i> promoter	40
Discussion and future perspectives	41
1. $\alpha 11\beta 1$ integrin-dependent regulation of periodontal ligament function in the erupting mouse incisor (Paper I)	41
2. $\alpha 11\beta 1$ integrin-mediated collagen lattice contraction by incisor periodontal ligament fibroblasts requires MMP-13 (Paper II)	43
3. A role for $\alpha 11\beta 1$ integrin in the human periodontal ligament (Paper III)	47
Concluding remarks	50
References	51
Papers I - III	

Acknowledgements

This work was carried out at the Department of Biomedicine and Department of Clinical Odontology, University of Bergen, Norway. This study was financed by University of Bergen, The Meltzer Foundation and Helse Vest.

Over the years a lot of people have contributed in a various ways to my studies.

First of all I would like to thank my supervisors Anne Isine Bolstad and Donald Gullberg for excellent supervision and encouragement provided over the years. I am very grateful for your help and guidance during the preparation of this thesis.

I would like to thank Marion Kusche-Gullberg for helpful suggestions and comments regarding practical part of my project as well as the seminars.

A special thank goes to Svetlana Popova, Ning Lu and Åsa Lidén, who are not only a very helpful lab-bench co-workers but also good friends.

I would like to thank Sergio Carracedo, Ida Wiig Sørensen, Cecilia Österholm-Corbascio, Almir Feta and Tabasum Imran for being good and helpful co-workers and creating nice working environment. I would like to thank Mona Grønning for valuable technical assistance in the lab.

The assistance from Ying Xue, Rita Greiner-Simonsen, Gry Kibsgaard, Erik Sandquist and Kari Nordvik is very much appreciated.

Finally, I would like to thank to my family who has always been supportive and understanding about my decision to continue my education so far from home.

Bergen, April 2009

Malgorzata Barczyk

List of papers

The present thesis is based on the following papers and will be referred to in the text by their Roman numerals.

- Paper I:** Popova SN, Barczyk M, Tiger CF, Beertsen W, Zigrino P, Aszodi A, Miosge N, Forsberg E, Gullberg D. **α 11 β 1 integrin-dependent regulation of periodontal ligament function in the erupting mouse incisor.** *Mol Cell Biol.* 2007, 27: 4306-4316.
- Paper II:** Barczyk MM, Popova SN, Bolstad AI, and Gullberg, D. **α 11 β 1 integrin-mediated collagen lattice contraction by mouse incisor periodontal ligament fibroblasts requires MMP-13.** Manuscript.
- Paper III:** Barczyk MM, Borge Olsen L-H, da Franca P, Loos BG, Mustafa K, Gullberg D and Bolstad AI. **A role for α 11 β 1 integrin in the human periodontal ligament.** *J Dent Res.* *In press.*

The copyrights licence agreement, no 2159360428737, for the Paper I was obtained from American Society for Microbiology.

Abbreviations

ALP	Alkaline phosphatase
BM	Basement membrane
BMP	Bone morphogenetic protein
BSP	Bone sialoprotein
CAF	Carcinoma-associated fibroblast
CD	Cytoplasmic domain
CSF	Colony-stimulating factor
E(x)	Embryonic day (x) e.g. E14
EBS	ETS-binding site
ECM	Extracellular matrix
EGF	Epidermal growth factor
ERK	Extracellular signal-regulated protein kinase
ES cell	Embryonic stem cell
ETS	E26 transforming-specific protein
FAK	Focal adhesion kinase
FGF-10	Fibroblast growth factor 10
GFFAH	Gly-Phe-Phe-Ala-His
GFFKR	Gly-Phe-Phe-Lys-Arg
GFFRS	Gly-Phe-Phe-Arg-Ser
GFOGER	Gly-Phe-Hyp-Gly-Glu-Arg
GLPGER	Gly-Leu-Pro-Gly-Glu-Arg
HERS	Hertwig's epithelial root sheath
hPDLF	Human periodontal ligament fibroblast
hGF	Human gingival fibroblast
I-domain	Inserted domain
IFN γ	Interferon gamma
IGF-II	Insulin-like growth factor 2
IL	Interleukin
<i>ITGA</i>	Human integrin alpha gene
<i>Itga</i>	Mouse integrin alpha gene
MAPK	Mitogen activated protein kinase
MEF	Mouse embryonic fibroblast
MIDAS	Metal ion-dependent adhesion site
MMP	Matrix metalloproteinase
OC	Osteocalcin
OP	Osteopontin
p38	p38 kinase
PDGF-BB	Platelet-derived growth factor-BB
PDL	Periodontal ligament
PSI-domain	Plexin, semaphorin and integrin domain
Runx-2	Runt-related transcription factor 2
SBS	Sp1/3-binding site
SDS-PAGE	Sodium dodecyl sulfate polyacrylamide gel electrophoresis
SNP	Single nucleotide polymorphism
Sp	Specificity protein
SPARC	Secreted protein, acidic, cysteine-rich
STAT	Signal transducer and activator of transcription
TGF- β	Transforming growth factor beta
TIMP	Tissue inhibitor of metalloproteinase
TM	Transmembrane domain
TNF- α	Tumor necrosis factor alpha
TSS	Transcription start site

Introduction

1. Cell-extracellular matrix interactions

1.1. Extracellular matrix

In multicellular organisms the cellular and tissue organization is mediated by the extracellular matrix (ECM), a structure composed of a number of complex macromolecules. Cells in tissues interact with other cells, or with ECM proteins, via specific receptors, like integrins. Different types of ECMs are usually divided into two major groups: the interstitial matrix and the basement membrane.

The interstitial matrix is a hydrated gel containing polysaccharides and fibrous proteins, which fill the interstitial space. The type of collagens and proteoglycans define the structure and properties of interstitial matrices [1]. Collagen I is the most abundant of all collagens found in interstitial matrices except for cartilage which contains mainly collagen II. The interstitial matrices also contain non-collagenous proteins contributing to the structural organization of the ECMs, such as fibronectin [2], elastin [3] and fibrillin [4].

Basement membranes (BM) are the ECMs formed in sheet-like depositions oriented basolaterally to monolayers of epithelium and endothelium, providing separation from underlying connective tissue and providing support to the cells. The BMs also surround cells such as fat cells, individual muscle cells and Schwann cells. Collagen IV, laminins, nidogens and proteoglycans are major components of BMs [5]. The BMs in different tissues can contain specific isoforms of collagen IV or laminins, which reflects the specific functions of particular tissues. Other minor components of BMs include agrin, fibulins, collagen XV, collagen XVIII and SPARC, which all contribute to the tissue-dependent heterogeneity of BMs [6].

The cell-ECM interactions regulate gene expression which further influences processes like cell differentiation and cell proliferation. These processes are important for tissue development, tissue homeostasis, tissue regeneration and in pathological conditions [7, 8]. Apart from the structure and composition of the ECM it is important to understand the complex dynamics of ECM. A number of pathological conditions such as tumor invasion and metastasis, rheumatoid arthritis and periodontal disease are characterized by destruction of the ECM by proteolytic enzymes such as matrix metalloproteinases (MMPs) [9].

1.2. Cell-ECM interactions

1.2.1. Integrins

Integrins are composed of α - and β -subunits forming non-covalent heterodimers [10]. Each subunit is a type I transmembrane glycoprotein with a large N-terminal extracellular multi-domain structure and short intracellular tail joined by a transmembrane domain. In vertebrates, there are 18 α -subunits and 8 β -subunits, forming 24 different integrin heterodimers (**Figure 1**). The name integrin comes from the “integrating” nature of these receptors [11]. They physically link the cytoskeleton of the cell to the ECM or to other cells, allowing activation of a number of signaling pathways [12]. Integrin receptors bind a number of ligands present in the ECM and on cell surfaces [13].

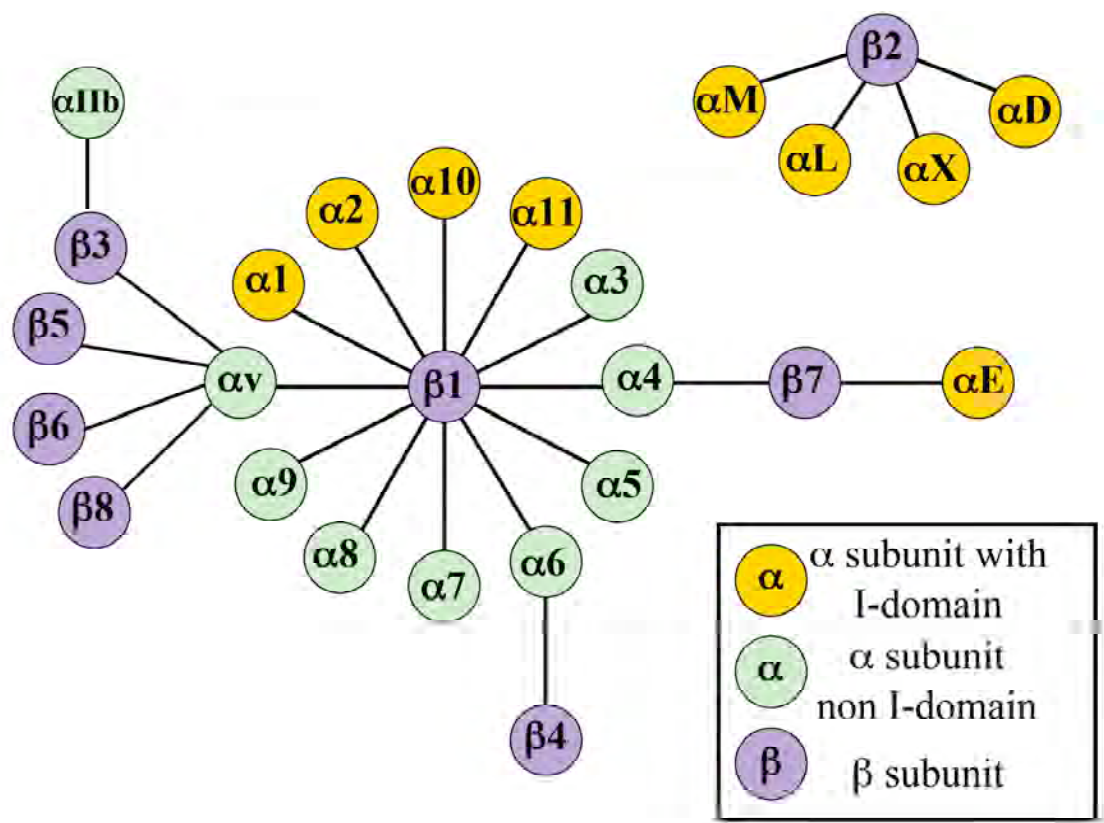


Figure 1. The integrin family. The figure is adopted and modified from Hynes, 2002 [14]. $\alpha 1\beta 1$, $\alpha 2\beta 1$, $\alpha 10\beta 1$ and $\alpha 11\beta 1$ are collagen-binding receptors.

1.2.2. Integrin structure

The integrin α -chains can structurally be divided into two groups depending on whether they contain or do not contain the inserted αI -domain. Nine of 18 α -subunits, $\alpha 1$, $\alpha 2$, $\alpha 10$, $\alpha 11$,

α M, α L, α D, α X and α E, contain the α I-domain, composed of approximately 200 amino acids. The α I-domain is inserted between blades 2-3 of the N-terminal β -propeller [15]. In the α -subunit the ligand-binding sites differ between the two groups of α -chains. In α I-domain containing α -chains the ligand-binding site largely resides in the α I-domain and it includes a crucially positioned Mg^{2+} ion. This latter site has been named the metal ion-dependent adhesion site (MIDAS) [16]. The interactions of the α I-domain with the β -chain are required for proper folding of some α I-domains [17]. In the α -chains lacking α I-domain, the ligand-binding site is confined to an interface between the β -propeller in the α -subunit and the β I-domain of the β -subunit [18].

The integrin β -subunit has a very different structure compared to the α -chains (**Figure 2**). Instead of a β -propeller, the β -chain head consists of an N-terminal cysteine-rich region called PSI (Plexin, semaphorin and integrin)-domain [19] with an inserted β I-domain [20]. The C-terminal end of the extracellular region contains four epidermal growth factor (EGF)-like cysteine-rich domains, which are thought to play an important role in the activation of integrins [21, 22]. The cytoplasmic tails of the β -chains are longer compared to the α -chains and are involved in anchorage to the cytoskeleton and interactions with signaling molecules [23]. The longest cytoplasmic tail, which is over 1000 amino acid long, has been described in the β 4 subunit [24].

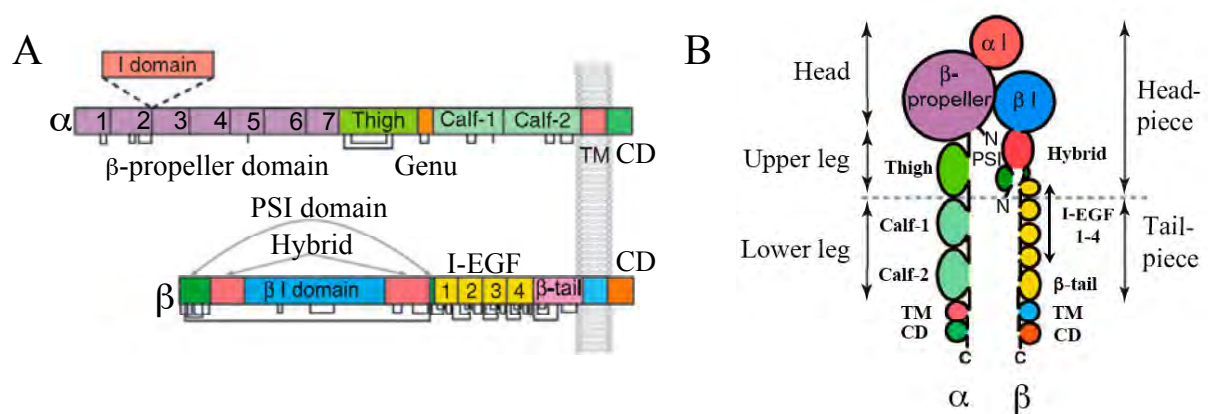


Figure 2. Schematic structure of an α I-domain integrin. (A) Schematic representation of integrin α - and β -subunits. (B) Schematic illustration of the α - and β -subunit domain arrangement from N- to C-terminal ends. Each domain color is the same as in figure A. TM refers to transmembrane domain and CD refers to cytoplasmic domain. Figure is adopted and modified from Luo et al., 2007 [25].

1.2.3. The collagen-binding integrins

Integrins can be grouped in subfamilies on the basis of their β -subunit content, characteristics of their α -subunit or based on the ligands that they bind. All four collagen-binding integrins $\alpha1\beta1$, $\alpha2\beta1$, $\alpha10\beta1$ and $\alpha11\beta1$ belong to the subfamily of $\beta1$ -subunit containing integrins [26, 27]. Collagen-binding integrins bind native collagen via their α I-domains which recognize a GFOGER motif [28-30] or similar sequences, depending on the collagen type [31]. Studies of collagen-binding integrins have shown that they are involved in cell adhesion, cell migration, remodeling of collagen lattices and regulation of collagen synthesis. These receptors can also affect cell proliferation, cell differentiation, angiogenesis, platelets adhesion and aggregation and endothelial tubulogenesis [26]. The $\alpha3\beta1$ integrin initially was classified as a collagen receptor but further studies showed it was mainly a laminin-332 receptor [32, 33]. Later, it was demonstrated that $\alpha3\beta1$ could regulate $\alpha2\beta1$ activity through receptor cross-talk [34].

Integrin $\alpha1\beta1$ was initially identified on a subpopulation of cultured activated T-cells [35, 36]. A characteristic feature of the $\alpha1$ chain is a 20 amino acid insertion of unknown function, which is positioned at the beginning of 6th β -propeller blade [37]. The $\alpha1$ chain contains a short cytoplasmic tail of 9 amino acids, the shortest of all integrins [26]. Experiments with transfected cells or isolated α I-domains showed that integrin $\alpha1\beta1$ is a receptor for collagen I, collagen IV and laminins [38, 39]. $\alpha1\beta1$ binds the network-forming collagen IV with higher affinity compared to the affinity to fibrillar collagen I [40]. Other ligands are matrilin-1 [41] and collagen XIII [42]. Integrin $\alpha1\beta1$ is predominantly found in mesenchymally-derived tissues and is highly expressed *in vivo* on certain cell types such as capillary endothelial cells and smooth muscle cells [43]. Mice lacking $\alpha1$ integrin subunit are viable. *In vitro* analysis of $\alpha1$ -deficient mouse embryonic fibroblasts (MEFs) revealed reduced proliferation rate of these cells compared to control MEFs when cells are plated on collagen I or mixture of collagens I and IV [44]. A characteristic feature of the dermis of $\alpha1$ -null animals is increased levels of collagen synthesis, but the dermal thickness is not increased, due to increased collagenase expression [45].

Another collagen-binding integrin is $\alpha2\beta1$. Similarly to $\alpha1\beta1$ integrin, $\alpha2\beta1$ was identified on activated T-cells *in vitro* [36]. $\alpha2\beta1$ has been identified on a number of cells such as platelets, fibroblasts, Schwann cells of glia and on neuroglia, endothelial and epithelial cells [46]. The $\alpha2\beta1$ integrin is a receptor for most of mammalian collagens and it was shown in certain

studies that it binds monomeric forms of collagen I, collagen II, collagen III, collagen V [47] and collagen XI [48]. Other collagens recognized by the $\alpha 2\beta 1$ integrin include collagen IV [49], collagen IX [50], collagen XVI [51], collagen X [52] and collagen VII [47]. This receptor displays the highest binding affinity to fibrillar collagens [49] over lattice-forming collagens and it has been reported to bind to fibrils of collagens I-III [31, 53]. The $\alpha 2\beta 1$ integrin can also recognize some forms of laminins [39]. It is involved in generation of mechanical forces and mediates collagen gel contraction [54-56]. $\alpha 2\beta 1$ was also shown to participate in collagen fibrillogenesis [57, 58] and cell cycle progression [59, 60]. $\alpha 2$ -deficient mice display no obvious defects during development and are fertile, however, they display diminished mammary gland branching [61] and a reduced response of platelets to collagen I [61, 62]. Upon vascular injury in $\alpha 2$ -deficient mice, bleeding time is prolonged but no spontaneous bleeding has been observed [63]. A lack of the $\alpha 2$ -subunit has also been reported to reduce the growth of thrombi after endothelial injury [64]. Finally, during excisional wound healing, the absence of the $\alpha 2$ -subunit leads to enhanced neoangiogenesis while re-epithelialization remains normal whereas wound tensile strain is reduced [65, 66].

Integrin $\alpha 10\beta 1$ was originally identified as a collagen II-binding integrin on chondrocytes [67]. Immunohistochemical analysis of embryonic murine tissues has shown that the $\alpha 10$ -subunit is detected in collagen II-expressing tissues. It was found mainly on chondrocytes in the cartilage of joints, vertebral column, trachea and the cartilage supporting the bronchi. Furthermore, $\alpha 10\beta 1$ was detected on fibroblasts in specialized fibrous tissues such as tendons, fascia of skeletal muscle or heart valves [68]. Studies using recombinant $\alpha 10$ I-domain showed that it recognizes collagens I-VI, laminin-111 [53] and collagen IX [50]. Similarly to the $\alpha 1$ I-domain, the $\alpha 10$ I-domain prefers network-forming collagens to the fibrillar collagens [53]. The expression of $\alpha 10$ -subunit is turned on during the initiation of chondrogenesis and is highly expressed during the different development changes suggesting that $\alpha 10\beta 1$ is important during cartilage development. Surprisingly, $\alpha 10$ -deficient mice display only a mild cartilage phenotype [69].

1.2.4. Integrin $\alpha 11\beta 1$

Integrin $\alpha 11\beta 1$ is the last addition to the integrin family and is most structurally related to integrin $\alpha 10\beta 1$, but functionally it displays different collagen-binding specificity. The integrin $\alpha 11$ -subunit associates only with the $\beta 1$ -subunit [70].

1.2.4.1. Identification of the $\alpha 11\beta 1$ integrin

$\alpha 11$ integrin chain was initially detected as an extra protein band in immunoprecipitation experiments from differentiated cultures of human fetal myoblasts [71]. Cloning of $\alpha 11$ using human fetal muscle cDNA and uterus cDNA libraries revealed a typical I-domain integrin with the mature chain consisting of 1167 amino acids migrating as a 145 kDa band in SDS-PAGE under non-reducing conditions. $\alpha 11$ is the longest integrin α -subunit identified [70]. The extracellular domain contains seven FG-GAP repeats in the N-terminal end with an inserted I-domain between repeats 2 and 3. The $\alpha 11$ I-domain consists of 195 amino acids and includes a conserved MIDAS motif. A characteristic feature distinguishing $\alpha 11$ integrin chain from other integrin α -subunits is the presence of a 22 amino acid insert in the calf-1 domain in the extracellular stalk region, at amino acids 804-826. The 23 amino acid long transmembrane region (amino acids 1142-1164) is followed by a cytoplasmic tail of 24 amino acids. Similarly to the $\alpha 10$ subunit, the $\alpha 11$ subunit lacks conserved GFFKR sequence and instead contains the sequence GFFRS [70]. In the human $\alpha 10$ subunit the corresponding sequence is GFFAH [72]. A comparison of the $\alpha 11$ chain with other collagen-binding integrin subunits showed that the $\alpha 11$ subunit displayed 42% sequence identity to the $\alpha 10$ subunit, followed by 37% identity to the $\alpha 1$ subunit and 35% identity to the $\alpha 2$ subunit [70]. Regarding comparison to non I-domain containing integrins, $\alpha 4$ and $\alpha 9$ subunits show the highest sequence identity to $\alpha 11$. Human $\alpha 11$ has 86% identity to mouse $\alpha 11$ at the nucleotide level and 89% identity on the protein level [30].

1.2.4.2. $\alpha 11$ integrin gene and $\alpha 11$ promoter region

The human $\alpha 11$ gene (*ITGAI1*) and the mouse $\alpha 11$ gene (*Itga11*) have been mapped to chromosomes 15q23 and 9, respectively [70, 73]. No polymorphisms or mutations related to diseases have been mapped to the integrin $\alpha 11$ gene so far. The *ITGAI1* gene covers 130 kb of genomic sequence and the complete *ITGAI1* is assembled of 30 exons and 29 introns (**Figure 3**). The *ITGAI1* transcription start site (TSS) was mapped 30 nucleotides upstream of the translation start site. Gene analysis *in silico* suggested several potential splice variants, which have not been validated at the RNA level yet [74]. The *ITGAI1* transcript is composed of a 30-nucleotide (nt) 5' untranslated region, a 3564-nucleotide open reading frame, and a 329-nucleotide 3' noncoding sequence including the polyA tail.

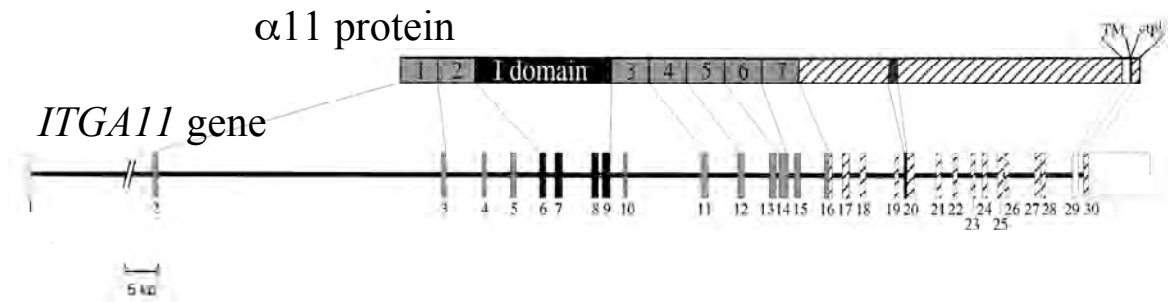


Figure 3. Schematic structure of integrin $\alpha 11$ protein and *ITGA11* gene. In the protein representation, the 7 FG-GAP repeats (1-7), the transmembrane part (TM) and the cytoplasmic tail (ctpl) are marked. In the gene, exonic sequences representing untranslated regions are open boxes and the unknown size in intron 1 is marked with //. The figure is adopted and modified from Zhang et al., 2002 [74].

In the *ITGA11* promoter studies, a 3kb-long sequence of 5'-flanking region (nt -2962/+25, +1 refers to the TSS) of the *ITGA11* has been cloned by genomic polymerase chain reaction (PCR). Putative binding sites for a number of transcription factors including Sp1 sites were identified within the construct. Many of these binding sites were predicted within 1.5 kb upstream of the transcription start site [74]. For further analysis of promoter activity three additional promoter regions (nt -1519/+25, nt -400/+25 and nt -127/+25) were cloned into Luciferase reporter vectors. A region covering nt -127/+25 has been shown to have core promoter activity [74]. The *ITGA11* promoter lacks TATA- and CCAAG-boxes in proximal promoter region, which is typical for the majority of integrin promoters [75]. Instead, it contains tandem Sp1-binding sites (SBS) and an ETS-binding site (EBS). Two SBS were located within nt regions -140/-134 and -122/-116, whereas the EBS was identified within nt-113/-110 [76]. From the collagen-binding integrins subfamily *ITGA2* and *ITGA10* are also regulated by Sp1 or Ets-family members [77-80]. The work with *ITGA11* has shown that the basal promoter is regulated by Sp1/Sp3/Ets-1 binding sites [76].

1.2.4.3. *ITGA11* regulation

Recent studies have demonstrated that the *ITGA11* proximal promoter is differently active within $\alpha 11$ -expressing and non-expressing cells, which suggests that this specific part of the promoter decides whether $\alpha 11$ integrin will, or will not, be expressed by certain cell types. SBS and EBS within the proximal promoter are involved in the regulation of transcription of

$\alpha 11$ integrin subunit in $\alpha 11$ -expressing cells, such as HT1080 (fibrosarcoma cell line) and MEFs [76].

1.2.4.4. Expression and ligands of the $\alpha 11\beta 1$ integrin

$\alpha 11\beta 1$ was initially detected as a major integrin in cultured skeletal muscle cells [71]. $\alpha 11$ is up-regulated on mRNA and protein level during myogenic differentiation of human myoblast cultures *in vitro*. Analysis of adult human tissues revealed wide expression pattern of $\alpha 11$ mRNA. The highest expression levels were detected in uterus, heart and skeletal muscle [70]. Based on these data, it was initially suggested that $\alpha 11$ would be expressed on muscle cells *in vivo*. However, analysis of $\alpha 11$ mRNA and protein expression and distribution in human [81] and mouse embryos [82] revealed a restricted expression on mesenchymal non-muscle cells in areas of highly organized interstitial collagen networks. Strong expression was detected in areas adjacent to forming cartilage. $\alpha 11$ protein was found in ectomesenchyme in the head, in periosteum around ribs, around vertebrae and tendons. High expression of $\alpha 11$ was also detected in intervertebral discs and in keratocytes of embryonic cornea where collagens are well organized in precise bundles and in multilayer arrangement [83]. No expression of $\alpha 11$ was detected in muscle cells. In general, $\alpha 11\beta 1$ integrin is expressed in mesenchymally-derived cells *in vitro*, and *in vivo* on fibroblasts at sites of highly organized collagen structures.

1.2.4.5. $\alpha 11\beta 1$ integrin function

In order to study the specific properties of $\alpha 11\beta 1$ in a cellular context, *in vitro* studies in $\alpha 11$ -[81, 84], and $\alpha 11$ -EGFP (unpublished) transfected C2C12 cells (mouse myoblast cell line) lacking endogenous collagen-binding integrins were performed. Cell attachment assays showed that $\alpha 11\beta 1$ integrin preferred collagen I to collagen IV [81] and studies of $\alpha 11$ I-domain binding to collagens have confirmed these finding [30]. The $\alpha 11$ also binds recombinant bacterial Scl proteins harboring a GLPGER motif [84]. C2C12 cells transfected with $\alpha 2\beta 1$ or $\alpha 11\beta 1$ integrins are able to contract collagen lattices [81]. This ability is likely to be important *in vivo* and contribute to collagen reorganization in pathological processes. PDGF-BB and serum stimulate collagen-dependent chemotaxis of $\alpha 11$ -over-expressing C2C12 cells [81].

$\alpha 11\beta 1$ integrin function *in vivo* and an $\alpha 11$ -deficient mouse model is described in details in **Paper I**.

2. Matrix metalloproteinases

There are 24 MMPs identified in mice. None of the MMP-deficient mice are embryonic lethal, which indicates enzymatic redundancy, enzymatic compensation or adaptive development [9]. *In vitro* studies have demonstrated that MMPs have multiple overlapping substrates [85].

2.1. The matrix metalloproteinase family

The MMPs belong to the metzincin group of proteases named after the zinc ion and the conserved methionine residue at the active site [86]. Mammalian MMPs share a conserved domain structure (**Figure 4**).

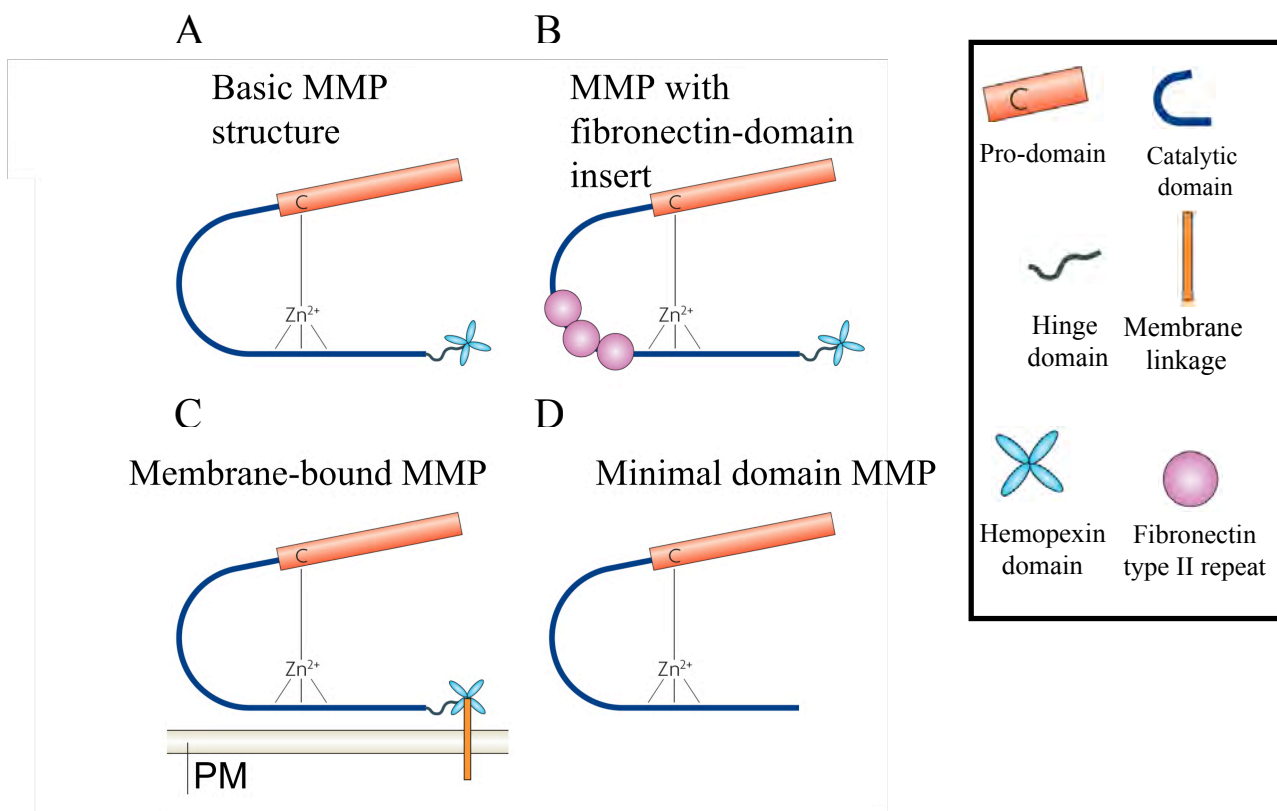


Figure 4. Schematic structure of matrix metalloproteinases. (A) Most MMPs have a conserved domain structure of a pro-domain, a catalytic domain, a hinge region and a hemopexin domain. (B) MMPs with fibronectin type II repeats. (C) Membrane type MMPs (MT-MMPs) are inserted in the plasma membrane. (D) Minimal MMPs lack the hinge and hemopexin domains. PM refers to plasma membrane. Figure is adopted and modified from Page-McCaw et al., 2007 [9].

In general, they consist of a catalytic domain containing a zinc-binding site with three highly conserved histidine residues, and an autoinhibitory pro-domain with conserved cysteine residue that coordinates the active-site zinc inhibiting catalysis [87]. Most of the MMPs contain at their C-termini a hemopexin domain attached by a flexible hinge. MMPs can degrade numerous

substrates at neutral pH [86]. Destabilization or removal of pro-domain allows the active site to cleave substrates. The hemopexin domain contains four-bladed β -propeller structure mediating protein-protein interactions contributing to enzyme activation, proper substrate recognition, and substrate degradation [9].

The MMP-mediated cleavage of ECM components generates fragments of different biological activities from their precursors with the ability to regulate tissue architecture through effects on the ECM and intracellular junctions. For example, MMP-mediated cleavage of ECM substrates removes physical barriers for cell migration. *In vitro* studies have shown that degradation of collagen I by MMP-1 is necessary for keratinocyte migration and wound healing [88] and that cleavage of collagen IV results in the exposure of cryptic sites which in turn promotes cell migration [89]. MMPs can also activate, deactivate or modify the activity of other proteinases, proteinase inhibitors, latent growth factors, chemotactic molecules, growth factor-binding proteins, cell surface receptors and cell-cell adhesion molecules [90]. These proteinases are up-regulated in diverse human diseases such as cancer and rheumatoid arthritis [9].

The MMPs are controlled at a number of steps including synthesis and secretion, activation of their pro-enzymatic forms, inhibition of already active forms and their clearance [86]. MMPs with furin recognition sequence are activated in the Golgi and secreted as active enzymes. MMP-14, one of the membrane-bound MMPs, is activated in this manner and can further activate pro-MMP-2 and pro-MMP-13 [86, 91]. MMP-14 deficient mice display a severe phenotype including craniofacial dysmorphism, dwarfism, retardation of postnatal growth, arthritis and death by 3-12 weeks of age due to inadequate collagen turnover in connective tissues [92]. Explant cultures derived from lungs and submandibular glands of MMP-14-*null* mice displayed reduced pro-MMP-2 activation [93, 94]. These findings indicate a central role for MMP-14 in regulation of a number of events involving specific cleavage and ECM reorganization. More recent studies have shown that activation of pro-MMP-2 requires dimerization of MMP-14 [95].

Tissue inhibitors of metalloproteinases (TIMPs) bind MMPs in a ratio of 1:1 and inhibit them [96]. All active MMPs can be non-specifically inhibited by α 2-macroglobulin [97].

2.2. Matrix metalloproteinases cleaving native collagens

The MMPs with collagenolytic activity described in mammals are MMP-1 (collagenase -1), MMP-8 (collagenase-2) and MMP-13 (collagenase-3). MMP-1 and MMP-13 are synthesized by macrophages, fibroblasts and chondrocytes. MMP-8 is released predominantly from

neutrophils and also from chondrocytes [86]. The degradation of collagen I requires specific collagenases because native, triple-helical molecules are resistant to cleavage by proteolytic enzymes at 37°C and neutral pH. The peptide bonds between residues Gly775 and Ile776 of the $\alpha 1(I)$ chain and Gly775 and Leu776 of the $\alpha 2(I)$ chain are the only sites in native collagen I molecules, which are known to be cleaved by collagenases. These cleavage sites are conserved in collagens from amphibians to mammals and are similar in collagens I-III [98, 99]. Cleavage of the collagens at this specific site by collagenases generates a three-quarter sized and a one-quarter sized helical fragments [100]. The collagenases show different specificity for different collagens. MMP-13 cleaves collagen II 10 times more efficiently than collagen I [101].

Other MMPs such as MMP-2 and MMP-14 can also cleave collagens [86, 102]. MMP-14 can degrade collagen I, II, III, laminins-111 and -332, fibronectin, vitronectin, fibrin and aggrecan [103]. The ability of MMPs to cleave the ECM components modulates focal adhesion stability and promotes cell migration and invasion [104-106].

2.2.1. MMP-13

MMP-13 (collagenase-3) was originally cloned from a human breast cancer cDNA library [107]. MMP-13, similarly to other MMPs is produced in the form of a pro-enzyme and needs to be cleaved to gain activity [9]. MMP-13 has wide substrate specificity but very restricted tissue expression [108]. Usually MMP-13 expression is limited to tissues with rapid remodeling of the ECM such as fetal bone. Elevated levels of MMP-13 have been identified in pathological conditions characterized by excessive ECM degradation such as rheumatoid arthritis, chronic cutaneous ulcers, malignant tumors and periodontal disease [9, 107, 109-112]. Over-expression of MMP-13 in human skin fibroblasts have demonstrated a role of MMP-13 in promoting survival and proliferation of cells and in activation of Akt and ERK-1/2 signaling in floating 3D collagen gels [113]. These findings suggest the existence of MMP-13-mediated survival mechanism for fibroblasts. A number of studies have focused on searching for mechanisms regulating MMP-13 expression. MMP-13 was shown to be up-regulated in human chondrocytes by IL-1 β and TNF α [114]. IL-1 β - and TNF- α -mediated MMP-13 induction requires activation of p38 MAPKinase in human chondrocytes [115, 116]. In contrast to these results, studies with mouse periodontal ligament (PDL) fibroblasts revealed that p38 MAPKinase negatively regulates IL-1 β - and TNF- α -induced MMP-13 expression on both mRNA and protein level [117]. These finding suggest cell type-dependent regulatory

mechanism for MMP-13 expression. Another growth factor regulating MMP-13 expression is TGF- β . TGF- β -mediated induction of MMP-13 has been studied in several human cell types and the studies have revealed that induction occurs via activation of Smad and p38 pathways [118-120]. MMP-13 expression can be also regulated by other factors such as mechanical tension. It has been shown that in rheumatoid arthritis synovial cells MMP-13 levels were transiently decreased by mechanical stress [121]. The signaling pathways by which mechanical stimuli regulate MMP-13 expression are still unclear. *In vitro* studies indicated that MMP-13 expression is regulated when cells are embedded in 3D collagen lattices. Human skin fibroblasts or MC615 mouse chondrocytic cells placed inside 3D collagen gels up-regulate MMP-13 and α 1 β 1 and α 2 β 1 integrins. The observed up-regulation is the result of activation of two different signaling pathways (p38 in skin fibroblasts and ERK in MC615 cells) [122, 123]. *In vivo* studies, using orthodontic tooth movement model in rats, showed increased expression of MMP-13 on both compression and tension sides occurring very early following the application of a force in the PDL and alveolar bone [124, 125].

MMP-13-deficient mice show abnormal skeletal development with dwarfism [126]. The observed phenotype is similar to deformities seen in patients with spondylo-meta-epiphyseal dysplasia-Missouri type, which is a result of a missense mutation in the MMP-13 gene [86, 127]. Furthermore, MMP-13 knockout mice show an expansion of the hypertrophic chondrocyte zone and delay of apoptosis, which suggests that MMP-13 is needed for the transition from cartilage to bone at the growth plates of long bones [126]. The primary defect in MMP-13 deficient mice is the failure of chondrocytes to remodel the ECM rich in collagen II and aggrecan [126]. Another function for MMP-13 in long bone development occurs during ossification process. During this process, the cartilage ECM serves as a scaffold for mineralization and forms spicules or trabeculae. In MMP-13-deficient mice spicules of irregular shapes, were observed, indicating roles for MMP-13 in the initial remodeling. The abnormal increase in trabecular bone mass retained into adulthood in MMP-13-deficient mice, suggests a role for MMP-13 in bone remodeling.

2.3. Integrin-ECM-MMP interactions

Components of the ECM are substrate of MMPs, but the interactions of MMPs with the ECM is complex and includes influence of the 3D organization of the matrix on integrin-regulated MMP activity and synthesis.

2.3.1. Directed proteolysis via interactions with integrins

Several studies have demonstrated that integrins and MMPs interact directly and co-localize in different cell types. It has been shown that $\alpha 2\beta 1$ co-localizes with MMP-1 on migrating keratinocytes via interaction between $\alpha 2$ I-domain and linker-hemopexin domains of MMP-1 [128]. Pro-MMP2 was reported to bind to $\alpha 2\beta 1$ via fibronectin type II modules in the MMP [129]. It has also been shown that MMP-2 plays role in astrocyte motility and that MMP-2 and integrin $\beta 1$ partially co-localize at the periphery of astrocyte. The MMP-2- $\beta 1$ integrin interaction could thus act as a linker between pericellular proteolysis and the actin cytoskeleton [130].

In vitro studies with endothelial cells have demonstrated that integrin clustering also influences co-localization of MMP-14 to aggregate with integrin complexes, which supports a role for integrin-mediated redistribution of active enzyme to sites of cell-ECM contact [131]. It has been shown that MMP-14 co-localizes with $\beta 1$ and $\alpha \nu \beta 3$ integrins on human endothelial cells and participates in migration of cells on different ECM proteins in 2D [131].

2.3.2. Integrin-mediated synthesis of MMPs

The regulation of MMP synthesis by integrins is well documented. The collagen-binding integrin $\alpha 1\beta 1$ has been shown to regulate MMP-7 and MMP-9 levels in mouse models of tumor growth [132], whereas $\alpha 2\beta 1$ has been demonstrated to regulate MMP-1 and MMP-13 in normal human skin fibroblasts [55, 122] and in human osteosarcoma cells [133].

Skin explants from $\alpha 1$ -deficient mice display increased activity of MMP-13 [45], MMP-2, MMP-7 and MMP-9 [132]. mRNA expression of MMP-2, MMP-9 and MMP-14 is significantly increased in glomeruli and cultured mesangial cells from $\alpha 1$ -deficient mice and increased expression can be abrogated in these cells by blocking the activation of p38. Furthermore, increased activity of MMP-2 and MMP-9 has been observed in cultured $\alpha 1$ -deficient mesangial cells [134]. $\alpha 2$ -deficient keratinocytes showed elevated expression of MMP-2, MMP-3, MMP-8, MMP-9, MMP-13 and MMP-14 mRNA [65].

2.4. The MMPs during collagen remodeling

MMPs have can mediate collagen matrices remodeling. MMP-13 has been shown to enhance the contraction of 3D free-floating collagen gels by human skin fibroblasts [113]. During cancer cell migration through 3D collagen gel, the MMP-14-mediated collagenolysis in cooperation with $\beta 1$ integrins was found to be crucial [135]. However, in the same studies,

blocking of the collagenolytic activity did not prevent cell migration of cancer cells in the low and high-density collagen gels. The results suggested protease-independent cell invasion, where the physical forces displace matrix fibrils and cells adopt amoeboid-like cell shape [135]. These studies have been performed using pepsin-extracted collagen I which is lacking non-helical telopeptides supporting cross-linking necessary for stabilization of collagen gel architecture. More recently, it has been shown that MMP-14 supports invasion of cancer cells within 3D collagen gels, prepared using telopeptide-intact collagen I, and within the stromal environment of the mammary gland [136]. The protease-independent mechanism of cell migration was not observed in these studies. This finding suggests that previously described protease-independent amoeboid activity might be the result of impaired structural integrity of collagen gels prepared from pepsin-extracted collagen I.

Recent studies have shown that not only the production of diffusible factors by tumor associated fibroblasts [137, 138] but also the physical matrix remodeling by these fibroblasts is indispensable for the invasion of carcinoma cells that retain their epithelial phenotype. Thus, the combination of proteolytic activity and force-mediated matrix remodeling by stromal fibroblasts is important to generate tracks through the matrix [139].

3. The periodontal ligament

3.1. The composition and the cells of the periodontal tissues

The periodontium can be considered as an organ composed of hard tissues (cementum and alveolar bone) and soft tissues (gingiva and PDL) (**Figure 5**). The ECM of these tissues contains fibrous and non-fibrous elements such as collagens, fibronectin, elastin, laminins, osteopontin, bone sialoprotein (BSP), different growth factors, proteoglycans, lipids and minerals [140].

The PDL is the only ligament that connects two distinct hard tissues. It is a fibrous, complex, soft connective tissue, attaching the tooth root to the inner wall of alveolar bone. The width of the PDL in human ranges from 0.15 to 0.38 mm with the thinnest part around the middle third of the root. The PDL thickness decreases with age. It is functionally important for tooth support, and for allowing the teeth to withstand the forces generated during mastication.

Another important function is regulation of alveolar bone volume and serving as a cell reservoir for tissue homeostasis and regeneration [141]. The PDL also acts as a sensory organ necessary for the proper positioning of the jaws during mastication. The PDL has very high adaptability to rapid changes in applied forces and capacity to maintain its width [142]. This ability is an important measure of PDL homeostasis. The alveolar bone is a specialized bony

structure that supports the teeth and is constantly remodeled in response to tooth micromovements generated during mastication. Cementum is mineralized tissue limited to the surface of the root [143].

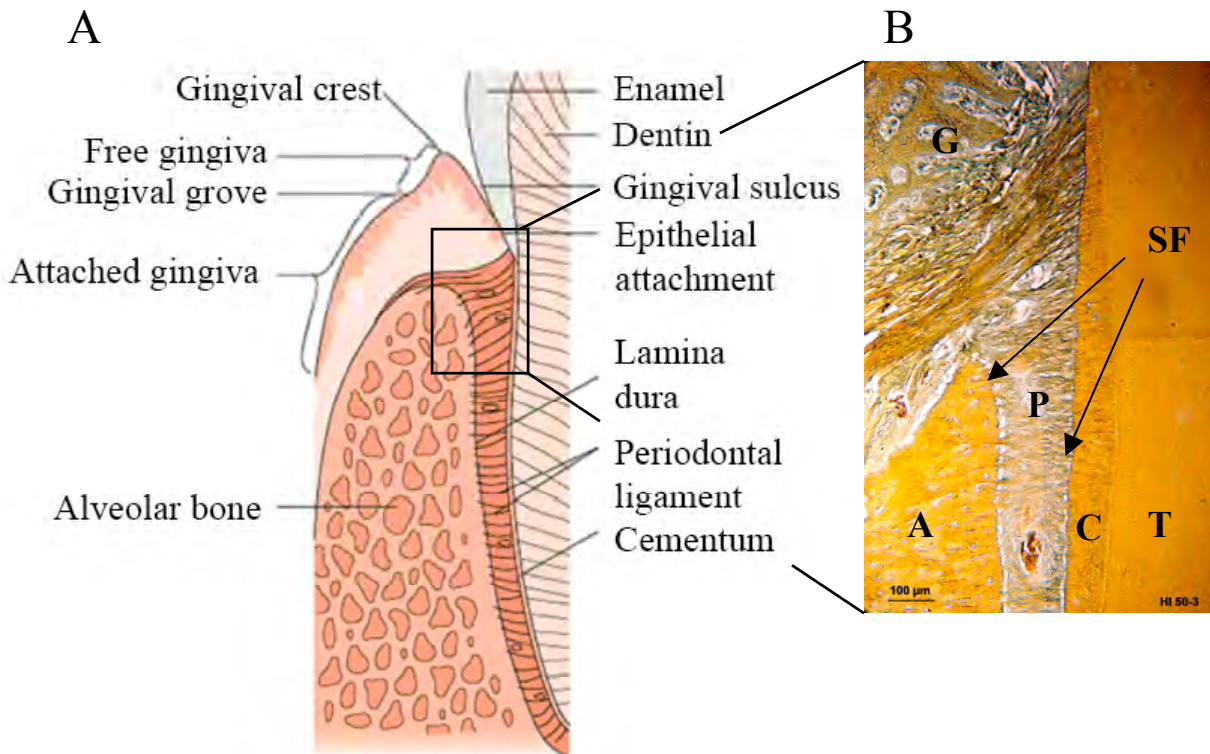


Figure 5. The periodontium. (A) Schematic illustration of the periodontium. Adopted and modified from Lindhe, 2003 [144]. (B) Histological section of the periodontium. A-alveolar bone, C-cementum, G-gingiva, P-periodontal ligament, SF-Sharpey's fibers, T-tooth. Courtesy of Knut A. Selvig.

The fibroblasts are the dominant cell population in the PDL. Other cells include osteoblasts, osteoclasts, epithelial cell rests of Malassez, monocytes, macrophages, cementoblasts, odontoblasts and progenitor cells.

The presence of the *stem cells* within the PDL has been reported in different species [145, 146]. The PDL stem cells are located closely to blood vessels and exhibit some of the typical cytological features of the stem cells, such as small size and responsiveness to stimulating factors. The stem cells isolated from adult human and sheep PDL have characteristics of *adult mesenchymal stem cells* and are a population distinct from bone marrow-derived mesenchymal stem cells [147]. The *PDL stem cells* originate from the *ectomesenchymal cranial neural crest cells* [147]. These progenitor cells can differentiate into cementoblasts, osteoblasts and PDL fibroblasts (**Figure 6**) [148].

The human PDL stem cells from adult PDL show the capacity to generate clonogenic adherent cell colonies [146] and express the stem cell marker STRO-1 similarly to bone marrow stromal stem cells [147]. The PDL stem cells also express mineralized tissue markers such as collagen

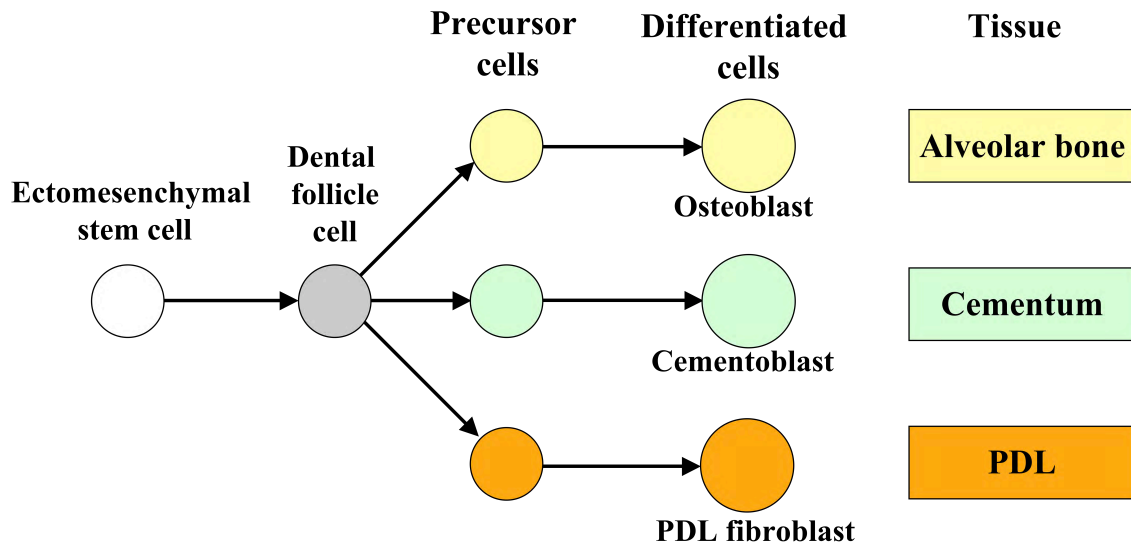


Figure 6. Cellular differentiation in the periodontal tissues.

I, collagen III, alkaline phosphatase (ALP), osteopontin (OP), osteocalcin (OC) and bone sialoprotein (BSP), and have capacity to form mineralized noduli *in vitro* under differentiation conditions.

Similarly to the PDL stem cells, the **PDL fibroblasts** originate from the *ectomesenchyme*. The PDL fibroblasts are characterized by a high rate of collagen turnover in ECM [149], which occurs by simultaneous synthesis and degradation of collagen fibrils. The PDL fibroblasts are aligned along the general direction of the fiber bundles. They are large cells with a vast number of organelles associated with protein synthesis and secretion. The fibroblasts in the PDL are a heterogeneous population [150] with capacity to differentiate, depending on local microenvironment, into cementoblasts and osteoblasts [142, 151]. No PDL-specific marker is available, but due to common origin to cementoblasts and osteoblasts of the PDL, the osteoblast phenotype-related genes can be used as markers for identification of the PDL fibroblasts. The master regulatory transcription factor RunX2 is expressed by these cells, together with other genes encoding collagen I, ALP, OP and OC. The epithelial cell rests of Malassez are remnants from Hertwig's epithelial root sheath (HERS) and they are found close to cementum in the form of clusters. The exact function of these cells is not known but their

possible role in regeneration is suggested [152]. Cementoblasts and osteoblasts contribute to the production of cementum and the remodeling of alveolar bone, respectively.

The elements of gingival connective tissue originate from oral mucosa connective tissue. The *gingival fibroblasts* are of *mesenchymal* origin and are important for development, reorganization and regeneration of gingival connective tissue [153].

The ECM of the PDL contains collagenous and non-collagenous fibers. The majority of collagens in the PDL is organized in fiber bundles and these bundles are called principal fibers. The extremities of collagen fiber bundles are embedded in the alveolar bone and cementum of the tooth and form mineralized Sharpey's fibers. Individual fibrils are continuously remodeled by fibroblasts while the overall fibers mesh maintains its structure and function. Other collagens, except for collagen I and III, found in the PDL are collagens V, VI, XII, and XIV [154, 155]. Elastic oxytalan fibers were identified within PDL and described as a 3D meshwork surrounding the root and terminating in the apical complex of arteries, veins and lymphatic vessels. It is believed that oxytalan fibers regulate vascular flow to the tooth. A vast number of non-collagenous proteins including proteoglycans [156], tenascin-C (in attachment zones along cementum and bone), fibronectin [157], vitronectin (found on collagen fibrils), elastin [140] have been detected in human PDL. A cell-bound ALP have been identified in the incisor PDL of a rat [158].

3.2. Integrin-ECM interactions in the PDL

The regulation of the reorganization of ECM and the role of different cell types in the PDL is still poorly understood on the molecular level. The PDL fibroblasts interact with the ECM via integrins binding different collagenous and non-collagenous substrates. Integrins interacting with the ECM extracellularly and with cytoskeletal components intracellularly are considered to be force transducing elements in fibroblasts [159].

A number of studies have characterized the integrin repertoire on molar PDL fibroblasts under different culture conditions. Cultured human PDL fibroblasts express mRNA encoding $\alpha 1$, $\alpha 2$, $\alpha 3$, $\alpha 4$, $\alpha 5$, $\alpha 6$, αv , $\beta 1$, $\beta 3$ and $\beta 4$ integrin subunits. The same cells upon mechanical stimulation showed increased expression of $\alpha 6$ and $\beta 1$ integrins and decreased expression of $\alpha 5$ subunit [160]. Another studies by Palaiologou et al. have shown in human molar PDL fibroblasts the presence of mRNA for integrin chains $\alpha 7$, $\alpha 8$, $\alpha 10$, $\beta 5$, $\beta 6$ and $\beta 8$ but not $\alpha 11$ [161].

A very few functional studies of integrin-ECM interactions in PDL derived cells have been conducted. It has been reported that PDL fibroblasts migrate on collagen I, collagen III and collagen V but also on fibronectin and laminins. $\alpha1\beta1$ integrin and $\alpha2\beta1$ integrin have been detected on protein level in these cells [162]. $\alpha2\beta1$ and $\alpha11\beta1$ integrins are also known to enhance polymerization of collagens I and III, which indicates a role in matrix assembly for these integrins [58]. This property might have implications for the PDL reorganization and regeneration. Both collagen I and collagen III are up-regulated during wound healing and regeneration [163, 164] and during orthodontic movement (collagen I, collagen III and collagen V) [165].

It has been shown that human molar PDL fibroblasts interact with collagen V via $\alpha\nu\beta3$ integrin, but possibly other RGD-recognizing integrins also can mediate interactions with collagen V [166]. $\alpha\nu\beta3$ integrin, in addition, regulates extracellular assembly of fibrilin-1, thereby modulating cell-mediated homeostasis of microfibrils. It is also suggested that oxytalan fibers, may be controlled by PDL fibroblasts [167].

Recently, it has been reported that $\alpha\nu\beta6$ integrin-mediated TGF- $\beta1$ activation in the junctional epithelium plays protective role in inflammatory periodontal disease. $\beta6$ -deficient mice develop classic symptoms of chronic periodontal disease. In a rat model, $\alpha\nu\beta6$ blocking led to appearance of initial signs of periodontitis. $\alpha\nu\beta6$ integrin is also down-regulated in human periodontal disease [168].

3.3. Matrix metalloproteinases in the PDL

Tooth eruption involves bone and PDL reorganization [169]. This process requires degradation and reorganization of ECM components and MMPs play a central role in this event [9]. It has been demonstrated that MMP-2 is expressed constitutively *in vitro* and *in vivo* by human PDL fibroblasts [170, 171]. In experiments where media were collected from free-floating collagen gels containing human PDL fibroblasts, an increased collagenase activity was noted and the collagen content within collagen lattices was reduced. Active MMP-2 and pro-MMP9 were also detected in the conditioned media. In attached collagen gels such changes were not observed until gels were detached and tension released, suggesting that tension relaxation enhances collagenolytic activity [172].

The PDL fibroblasts normally express MMP-13 and MMP-13 expression in these cells can be stimulated by IL-1 α [173] or TNF- α [174]. Studies with mouse molar PDL fibroblasts revealed that p38 MAPKinase negatively regulates IL-1 β and TNF- α -induced MMP-13

expression on both mRNA and protein level which is in contrary to results obtained from human skin fibroblasts [117].

The PDL tissue is a reservoir of mineralized matrix-forming cells [175]. It has been shown in the osteoblastic MC3T3-E1 cells, that MMPs can regulate osteoblastic differentiation [176]. Studies with bacterial collagenases [177] added to cells, and induction of endogenous collagenases by IL-1 β [178] showed decreased osteoblastic differentiation in MC3T3-E1 cells and human PDL fibroblasts, respectively. The exact mechanism for how this occurs is unknown, but most likely involves degradation of collagenous molecules needed for integrin-dependent differentiation signals [179-181]. Integrin-mediated adhesion to collagen has been shown to enhance expression of osteoblastic markers such as ALP, OC and BSP in bone marrow cells [182]. Increased MMP-dependent bioavailability of latent growth factors stored in the ECM might also be involved [183]. The MMP-dependent changes in osteoblastic differentiation are reflected in varying levels of differentiation markers and such correlation has been shown in human molar PDL fibroblasts. One of the characteristics of the periodontal disease are increased MMP levels [184], thus the cell differentiation in the PDL might be inhibited which might result in a decreased pool of cells capable of bone regeneration and replacement [185].

3.4. Periodontal disease

Periodontal disease is initiated by bacteria colonizing the dentogingival region of the tooth. The series of infections in the PDL tissue of a susceptible host may lead to soft and hard tissues destruction and loss of tooth attachment.

Gingivitis is a prerequisite for the periodontal disease development. Microorganisms forming the dental biofilm release the factors triggering host immune response and inflammation. Inflammatory factors, such as IL-1 or TGF- β which are released during immune response cause up-regulation and/or activation of MMPs produced by PDL fibroblasts, leading to breakdown and loss of the ECM of the PDL [186]. Such interference with the fibroblast function by periodontal disease results in destruction and finally, loss of tooth supporting tissue [187]. Interestingly, not all individuals diagnosed with gingivitis will develop periodontal disease. As already mentioned, the microorganisms are crucial for the initiation of the inflammatory periodontal disease but the progression of the disease is dependent on host-related risk factors such as genetic polymorphisms, systemic diseases and on environment-related factors such as smoking [188]. It is estimated that there are more than 600 different

bacteria species residing in the oral cavity. The shift of balance from commensal gram-positive bacteria to pathogenic gram-negative, proteolytic organisms has been associated with PDL tissue breakdown [189]. Several of the pathogenic bacteria forming dental plaque have been associated with periodontal disease. The disease is not triggered by one organism but is a result of mixed infections. *Aggregatibacter actinomycetemcomitans* has been associated with aggressive periodontitis while *Porphyromonas gingivalis*, *A. actinomycetemcomitans*, *Tannerella forsythia*, *Treponema denticola* and *Eikenella corrodens* have been associated with chronic periodontitis. The colonization of host tissues starts with adhesion of bacteria to them. *P. gingivalis* adhesion to host cells requires formation of fimbriae and fimbriae have been found to bind epithelial cells, fibronectin and fibrinogen. The fimbriae of *P. gingivalis* were reported to compete with the ECM proteins to bind over-expressed $\alpha\beta3$ and $\alpha5\beta1$ integrins in Chinese hamster ovary (CHO) cells. It is suggested that such properties might affect normal ECM proteins turnover and the ECM repair, thus adding to damage to the gingival tissue [190]. In *A. actinomycetemcomitans* outer membrane, a protein named extracellular matrix adhesion protein A (EmaA) was identified as a direct mediator of adhesion to collagen V [191]. The adhesion of *T. denticola* to fibronectin and collagen I is followed by the degradation of the ECM proteins [189]. Increased levels of cytokines and chemokines are observed during inflammation and immune response in periodontal disease. In *P. gingivalis*, type II fimbriae, predominant fimbrial phenotype associated with periodontal disease, have been shown to induce expression of IL-1 β , IL-8, IL-12 and TNF- α in macrophages-like U937 cells. The lipopolysaccharide (LPS) of *P. gingivalis* has been shown to induce levels of prostaglandin E2 and IL-6 in human PDL fibroblasts. *A. actinomycetemcomitans* can stimulate gingival epithelial cells to express IL-8 and human PDL cells to express IL-6. *P. gingivalis* and *A. actinomycetemcomitans* can also induce bone-resorptive cytokines like TNF- α , IL-1 β and IL-6 when injected subcutaneously [189].

Under normal conditions, the synthesis and degradation of connective tissue is tightly regulated and balanced. Disturbed balance between MMPs and their inhibitors resulting in connective tissue matrix breakdown is observed during periodontal disease. Highly increased expression of MMP-13 is observed in the PDL of patients diagnosed with periodontitis [184]. MMP-8 and MMP-9 are major collagenase and gelatinase, respectively, detected in gingival cervical fluid of chronic periodontitis patients while MMP-1 is a major collagenase found in aggressive periodontitis [189]. Low levels of TIMPs have been detected in gingival cervical fluid of chronic periodontal disease [192]. An activation of different latent MMPs by

periodontopathogenic bacteria has been demonstrated. MMP-1 from gingival fibroblasts and MMP-8 from polymorphonuclear leukocytes can be activated by *P. gingivalis* trypsin-like protease and *T. denticola* chemotrypsin-like protease [193]. MMP-1 and MMP-3 from gingival fibroblasts and MMP-9 from medium of HT1080 cells can be activated by *P. gingivalis* thiol-protease [194]. Periodontopathogenic proteases have also been reported to inactivate inhibitors of MMPs. *P. gingivalis* cysteine proteinase, periodontanin, can inactivate α 1-protease inhibitor. In general, high levels of MMPs and decreased levels of TIMPs are characteristic for severe periodontal disease [195].

The host response to infectious pathogens depends on nature and virulence of pathogens, but also on genetic factors. Several genetic polymorphisms have been associated with periodontal disease. Most of research focused on possible polymorphisms of genes involved in inflammation and immune response. It has been observed that polymorphic genes regulating the production of IL-1 in response to bacterial LPS may have an impact on susceptibility of host to severe periodontitis. Polymorphisms within leukocyte Fc receptors, affecting affinity of the interaction with immunoglobulins, have been shown to associate with periodontitis severity. Low affinity receptors are more common in patients with more severe and rapidly progressing periodontal disease [196]. Certain chromosomal or genetic disorders such as Down's syndrome, leukocyte adhesion deficiency syndrome, Papillon-Lefèvre syndrome and the Ehlers-Danlos syndrome have been reported as predisposing to periodontal disease. Systemic disorders such as diabetes can increase the risk of periodontitis [188]. Smoking is one of the environmental factors strongly predisposing to periodontal disease. The relationship between periodontitis and smoking appears to be dose-dependent. It has been shown that more severe loss of tooth attachment apparatus are observed in heavy smokers compared to light smokers. The length of exposure to tobacco products is also a significant factor. The prevalence for periodontal disease increases with age [188].

Aims of the present study

The overall aim of this study was to increase our understanding for the role of $\alpha 11\beta 1$ integrin *in vivo* and *in vitro* using an $\alpha 11$ -deficient mouse model and cells isolated from such animals. The potential role of $\alpha 11$ in human tooth supporting apparatus was also evaluated. The specific aims of the present studies were:

Paper I

- To analyze the $\alpha 11$ -deficient mouse phenotype *in vivo*.
- To investigate the role of $\alpha 11\beta 1$ integrin in cell attachment, cell spreading, cell proliferation and reorganization of 3D collagen lattices using MEFs isolated from $\alpha 11$ -deficient animals.

Paper II

- To isolate incisor PDL fibroblasts.
- To characterize the repertoire of collagen-binding integrin in cultured mouse PDL fibroblasts.
- To identify molecular mechanisms underlying $\alpha 11$ -deficient phenotype *in vitro*, which most likely has consequences for the phenotype observed *in vivo*.

Paper III

- To examine the repertoire of collagen-binding integrins in human PDL fibroblasts and human PDL tissue.
- To explore a possible contribution of $\alpha 11\beta 1$ to reorganization of collagen gels by PDL fibroblasts.
- To investigate the $\alpha 11$ expression pattern in the PDL tissue of healthy and periodontally diseased individuals.
- To search for single nucleotide polymorphisms in the proximal promoter of *ITGAI1*.

Materials and Methods

The experimental procedures and materials are described in Papers I-III.

Results

1. $\alpha 11\beta 1$ integrin-dependent regulation of periodontal ligament function in the erupting mouse incisor (Paper I)

$\alpha 1\beta 1$, $\alpha 2\beta 1$, $\alpha 10\beta 1$ and $\alpha 11\beta 1$ integrins constitute the family of collagen-binding integrins, acting as primary receptors for native collagens. Data from *in vitro* studies of C2C12 cells expressing $\alpha 11\beta 1$ as the only collagen-binding integrin have shown that $\alpha 11\beta 1$ integrin prefers collagen I to collagen IV [81]. It was previously demonstrated that $\alpha 11\beta 1$ is the only detectable collagen-binding integrin in the incisor PDL fibroblasts in mouse [82]. The most abundant protein in the PDL is collagen I. In the *continuously erupting* rodent incisor, the PDL has been shown to play a central role during tooth eruption [197].

In Paper I we analyzed the phenotype of the $\alpha 11$ -deficient mouse and characterized cells isolated from $\alpha 11$ -deficient and $\alpha 11$ -expressing mouse embryos.

1.1. Generation of an integrin $\alpha 11$ -deficient mouse strain

The $\alpha 11$ -deficient mouse was generated using gene targeting techniques. In order to introduce a null mutation in *Itga11*, parts of exon 3 and intron 3 were replaced with an internal ribosome entry site, a bacterial reporter LacZ, and PGK *neo* cassette. The targeting construct was introduced into R1 ES cells and colonies resistant to G418 were selected. A total of 325 clones were screened by Southern blotting and two clones (95 and 215) were selected for further work. These clones were injected into blastocyst of C57BL/6J mice. Obtained chimeric males were mated with C57BL/6J females, and the offspring were screened with Southern blotting for the presence of the targeted allele. Intercrossing of heterozygous F1 mice gave rise to live homozygous offspring with expected Mendelian ratios and no phenotypic defects at birth. Both homozygous males and females were fertile.

1.2. The skeletal system of the $\alpha 11$ -deficient mice

When animals were 3 weeks old, it was noted that each litter contained mice smaller than their littermates. Genotyping showed that these smaller animals were homozygous mice and both males and females demonstrated 20-30% reduction in weight persisting through adulthood. X-rays showed that overall skeleton size was smaller and compatible with proportional dwarfism. To rule out possible effect from the neo cassette, flanked by loxP sites, the neo cassette was deleted by crossing with Cre-deleter mice. The described phenotype persisted after the neo cassette removal, confirming that the observed weight difference was due to inactivation of

$\alpha 11$ integrin alleles. The neo-deleted mice were used for further analysis. Since previous reports showed that $\alpha 11$ is highly expressed in perichondrium [81, 82], initial studies focused on analysis of skeletal system. However no structural defects of the forming cartilage or bone at 1-8 weeks were observed. No differences in chondrocyte proliferation between control and mutant mice were detected.

1.3. Tooth phenotype of $\alpha 11$ -deficient mice

The $\alpha 11$ -deficient mice displayed increased mortality starting from 1 year of age, and 10 such mice died between 12-19 months compared to only one control mouse. Necropsy of the $\alpha 11$ -deficient mice revealed severe malnutrition, bringing attention to the digestive system. Even though $\alpha 11$ is co-expressed with $\alpha 2$ integrin in villus cluster fibroblasts, no defects were found in this area. In the older mice a incisor phenotype was clearly noticeable. Mutant mice showed delay in the time of incisor eruption and altered tooth shape. In the older animals the incisal part of the upper incisors was often missing, whereas intraalveolar part was still present. Analysis of tooth eruption showed that it was reduced at 3-6 weeks and was stopped at 6-7 months. The smaller size of animals and tooth phenotype were present in both strains of independently generated *Itga11*-deficient mice. Micro-CT of incisor showed increased thickness of dentin layers in the apical region resulting in the pulp closure.

Histological analysis of incisor PDL showed increased thickness due to increased amount of collagen as determined by Sirius red staining. Fibroblast density, but not the cell number, was reduced when compared with an even distribution in the control PDL. The acellular cementum was increased in thickness and increased number of cell rests of Malassez was a characteristic feature of the PDL in animals older than 6 months. Electron microscopy showed normal collagen fibrils and normal collagen network. The PDL of the molars did not display any abnormalities at any age with regard to tooth eruption or morphology. In order to examine whether defective incisors were the underlying cause of the proportional dwarfism, animals were fed a soft food diet. This regimen partially rescued the reduced weight phenotype.

1.4. *In situ* localization of $\alpha 11$ RNA and immunohistochemical analysis of $\alpha 11$ protein in the PDL

The expression of $\alpha 11$ RNA and protein was analyzed during embryonic day (E) 14-17 and postnatally. Immunohistochemistry detected $\alpha 11$ in the dental follicular mesenchyme that forms the PDL and in the preodontoblasts of developing molar and incisors. $\alpha 1$ and $\alpha 2$ integrin

proteins were detected only in capillaries in the PDL while $\alpha 10$ protein was completely lacking. $\alpha 11$ protein levels were significantly higher in adult incisor PDL compared to molar PDL. No compensatory regulation of collagen-binding integrins in molar or incisor PDL was observed when $\alpha 11$ was not detected in these young ages. Collagens III and XII and CD-31-positive cells were detected in both control and mutant incisor PDL but no differences in expression between mutant and control animals were observed. Due to denaturing conditions of the decalcification protocols, performance of *in situ* MMP activity assay was not possible but instead PCR analysis was performed. In semiquantitative PCR increased mRNA levels of MMP-9 and decreased levels of MMP-14 were observed in the $\alpha 11$ -deficient incisor PDL tissue. Reduced levels of MMP-13 were also noted.

1.5. *In vitro* phenotype of $\alpha 11$ -deficient mouse embryonic fibroblasts

The MEFs isolated from $\alpha 11$ -deficient embryos showed significantly reduced adhesion to collagen I compared to control cells, whereas adhesion to collagen IV was changed only marginally. Adhesion to fibronectin was not affected by the absence of integrin $\alpha 11$. The proportion of $\alpha 11$ -deficient cells that had spread on collagen I was reduced by 50% compared to control cells. No differences were observed in the case of spreading on fibronectin. Fewer vinculin-positive focal contacts were formed in $\alpha 11$ -deficient MEFs seeded on collagen I. Mutant cells also displayed reduced capacity to reorganize collagen gels. Incubation of control cells with a mixture of $\alpha 1$ and $\alpha 2$ integrin-blocking antibodies did not alter their ability to contract collagen gels whereas $\alpha 11$ -deficient cells reduced lattices to 60% of their original size. The simian virus 40 large T antigen (SV40)-immortalized $\alpha 11$ -deficient MEFs retransfected with human $\alpha 11$ cDNA were able to contract collagen gels as efficiently as $\alpha 11$ -expressing SV40 MEFs. Analysis of MMP expression and activity showed a reproducible decrease in MMP-13 and MMP-14 mRNA levels in mutant MEFs cultured in 3D collagen gels whereas the activities of MMP-2 and MMP-9 were not affected by the lack of $\alpha 11$ integrin.

2. $\alpha 11\beta 1$ integrin-mediated collagen lattice contraction by incisor periodontal ligament fibroblasts requires MMP-13 (Paper II)

Results obtained from studies of $\alpha 11$ -deficient mice (**Paper I**) allowed us to identify a specific population of cells affected by the lack of $\alpha 11$ integrin. The disturbed functions of mutant incisor PDL fibroblasts most probably have direct connection to the $\alpha 11$ phenotype.

2.1. Isolation of incisor PDL fibroblasts

To study the mechanism underlying molecular defect at cellular level incisor PDL fibroblasts were isolated from mutant and control animals. Due to the small amount of tissue, the attempts to establish cultures from pooled isolated incisor PDLs or from extracted incisors, failed. To overcome this problem $\alpha 11$ -deficient mice were crossed with immortomice carrying SV40 large T under the control of the temperature-sensitive H-2Kb-tsA58 promoter [198] and cells were isolated by explant cultures from extracted incisors. Two control and two $\alpha 11$ -deficient incisor PDL fibroblast isolates were established in this way (**Figure 7**).

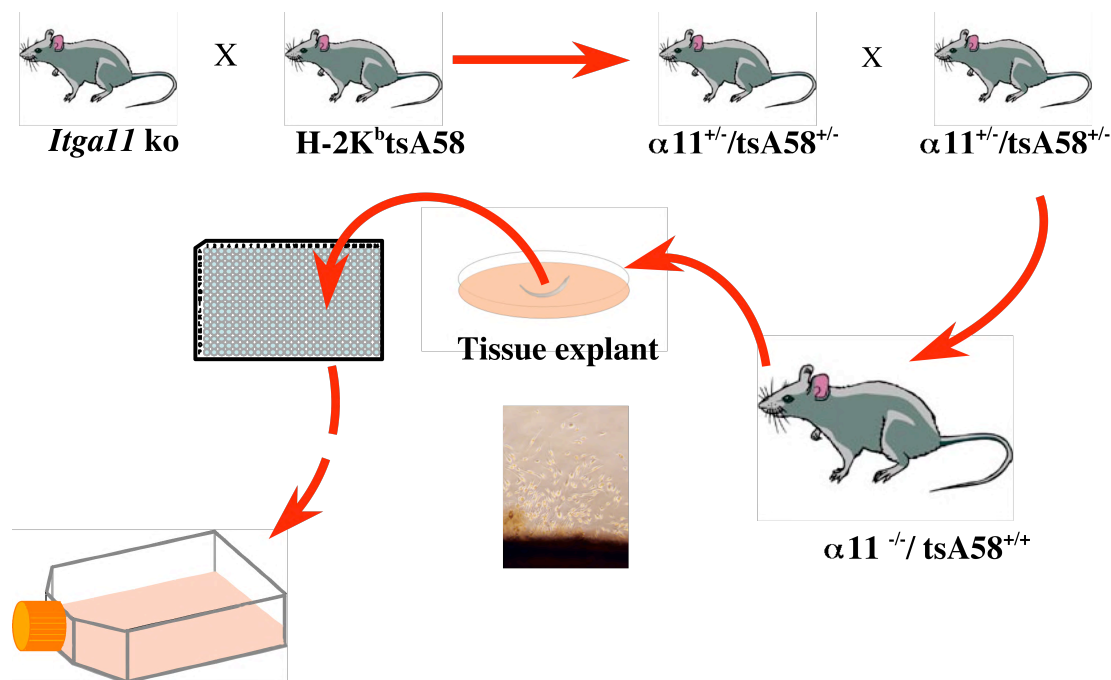


Figure 7. Isolation of immortalized incisor periodontal ligament fibroblasts.

2.2. Characterization of incisor PDL fibroblasts

Metabolic labeling and immunoprecipitation experiments with integrin antibodies revealed high levels of $\alpha 11$ integrin derived from control teeth and lack of protein in cell explants of $\alpha 11$ -deficient PDL. $\alpha 11$ was not detected in a cloned molar PDL fibroblast cell line mPDL-L2 isolated in a similar manner from immortomouse molar PDL [199]. Incisor PDL fibroblasts *in vivo* exist in a 3D microenvironment. To mimic this condition, cells were placed in a 3D collagen gel. Incisor PDL fibroblasts in attached collagen gels, display increased levels of $\alpha 11$ protein at 48h demonstrating that mechanical strain supports high $\alpha 11$ integrin levels. $\alpha 11$ levels decreased in cells cultured in free-floating collagen lattices. A characteristic feature of

PDL fibroblasts is their ability to express osteogenic markers and form osteogenic noduli when induced with differentiation medium containing BMP-2 [199]. When $\alpha 11$ -deficient and control cells were subjected to such treatment they showed similar capacity to differentiate and form noduli. Semiquantitative PCR revealed that cells upon differentiation treatment expressed collagen $\alpha 2(I)$, collagen $\alpha 1(XII)$ and periostin, which are known PDL fibroblast markers. Incisor PDL fibroblasts also expressed mRNA for osteogenic markers such as the transcription factor RunX2, OP (bone ECM protein) and low levels of OC (detected in only one mutant and one control isolate). Based on this finding we concluded that the isolated cells had properties of PDL fibroblasts.

2.3. Functional analysis of $\alpha 11\beta 1$ integrin in incisor PDL fibroblasts

To examine the effect of $\alpha 11$ -deficiency on the ability of incisor PDL fibroblasts to interact with collagen I, cells were tested in cell adhesion, cell migration and collagen gel contraction assays. In adhesion assays, a reduced ability of $\alpha 11$ -deficient cells to attach to collagen I was observed. A combination of antibodies to $\alpha 1$ and $\alpha 2$ integrin reduced cell attachment of control cells by 50-60%. In order to evaluate the ability of the incisor PDL fibroblasts to remodel 3D collagen lattices, cells were incorporated into attached and free-floating gels. $\alpha 11$ -deficient cells showed reduced ability to reorganize both types of matrices. In floating gels $\alpha 11$ -deficient cells contracted gels only to 80% of the initial area whereas control cells contracted gels even down to 20% of their initial area. The need for $\alpha 11$ integrin in reorganization of collagen gels was verified in an experiment with siRNA to $\alpha 11$ mRNA. Reduced levels of $\alpha 11$ protein to approximately 40% in the $\alpha 11$ -expressing cells, reduced the ability of cells to contract collagen gels by 20%. The effect of $\alpha 11$ expression on cell ability to migrate on collagen I was tested in chemotaxis assay. In absence of chemoattractant no migration was observed and presence of 10% serum only marginally stimulated cell migration. A very effective chemoattractant was PDGF-BB, which strongly stimulated migration of control cells, but migration of $\alpha 11$ -deficient cells was strongly attenuated.

In summary, $\alpha 11\beta 1$ integrin is a major collagen receptor in incisor PDL fibroblasts mediating cell adhesion, migration and collagen lattice remodeling.

2.4. $\alpha 11\beta 1$ regulates MMP-13 levels inside a 3D collagen gel

It has been shown in human skin fibroblasts and human osteosarcoma cell lines that fibroblasts within a 3D collagen gel induce MMP levels in a collagen-binding integrin-dependent manner

[122, 133]. Analysis of MMPs mRNA levels indicated dysregulated MMP-13 and MMP-14 levels in $\alpha 11$ deficient MEFs (**Paper I**).

To examine possible connection between $\alpha 11$ expression and regulation of MMP levels in incisor PDL fibroblasts, the cells were cultured in free-floating or attached gels and MMP protein levels and collagenase activity were tested. Western blot analysis of cells revealed that MMP-2 levels were strongly induced in floating and attached gels in an $\alpha 11$ integrin-independent manner. MMP-13 protein levels were induced inside of 3D collagen gels only when $\alpha 11\beta 1$ integrin was expressed by the cells. No consistent changes were seen in MMP-9 and MMP-14 protein levels. Surprisingly, the analysis of conditioned media did not show increased collagenase activity in $\alpha 11$ -expressing cells when placed inside 3D collagen gels. The possible explanation is that the collagenase partially might be trapped within the collagen gel, and hence is only partially detected in the media. A decreased collagenase activity in media collected from $\alpha 11$ -deficient cells was observed in all conditions. In another type of assay, a clear reduction of collagenase activity in $\alpha 11$ -deficient cells was shown in monolayers where cells were plated in a drop of collagen I and cultured for 48h. Cells were removed and to monitor collagenase activity the remaining collagen was stained. $\alpha 11$ -expressing cells produced clear zones in the area where the cells had been placed while $\alpha 11$ -deficient cells showed only marginal effects on the collagen layer.

2.5. $\alpha 11\beta 1$ -mediated collagen reorganization in part depends on MMP-13

As already mentioned it has been shown before that fibroblast-mediated collagen gel contraction is dependent on MMP-13 [122]. To test if part of this activity is mediated by $\alpha 11\beta 1$ integrin, the effects of a broad MMP inhibitor (GM6001) and MMP-13 specific inhibitor (CL-82198) were tested in collagen gel contraction assays. The contraction of collagen gels by $\alpha 11$ -expressing cells was inhibited by 20% when GM6001 was used whereas CL-82198 reduced contraction somewhat less. These experiment were performed using pepsin-extracted collagen I. When collagen I containing non-helical telopeptides at N- and C-terminal ends, allowing the collagen cross-linking formation [200] was used, the effects of both inhibitors were even greater (**data not shown**). Addition of exogenous MMP-13 to collagen gels containing $\alpha 11$ -expressing incisor PDL fibroblasts increased the contraction of collagen gels by approximately 10%.

3. A role for $\alpha 11\beta 1$ integrin in the human periodontal ligament (Paper III)

Our earlier data demonstrated that $\alpha 11\beta 1$ integrin is indispensable for the PDL-driven tooth eruption in mouse (**Paper I**). To explore a possible role of $\alpha 11\beta 1$ integrin in human periodontium, the expression of $\alpha 11$ in human PDL tissue, in cultured human PDL fibroblasts and in human gingival fibroblasts, was characterized. A report by Lallier et al. suggested that in addition to the integrin chains $\alpha 1$ and $\alpha 2$, additional collagen-binding integrins are expressed by human PDL fibroblasts, which contribute to cell adhesion and cell migration on collagen I [162].

3.1. The repertoire of collagen-binding integrins in human PDL and gingival fibroblasts

Analyses of collagen-binding integrins on mRNA and protein level were performed on three different primary fibroblast cultures, established from human PDL and gingival tissues. Using quantitative PCR, $\alpha 1$, $\alpha 2$ and $\alpha 11$ integrin mRNA were detected in all PDL fibroblast and gingival fibroblast isolates. $\alpha 11$ mRNA levels were higher in all PDL fibroblast isolates compared to gingival fibroblast isolates. $\alpha 10$ integrin mRNA was only detected in PDL fibroblasts, but expression was very weak. Further analysis was performed on selected PDL and gingival cells isolates (hPDLF1 and hGF1). To analyze collagen-binding integrins protein levels, immunoprecipitation experiments and immunofluorescence analysis were performed. Immunoprecipitation of metabolically labeled cells detected $\alpha 1$, $\alpha 2$ and $\alpha 11$ integrin chains, but not $\alpha 10$. The levels of $\alpha 11$ seemed to be higher in the PDL fibroblasts, which was confirmed by western blotting. Indirect immunofluorescence of PDL fibroblasts and gingival fibroblasts showed that $\alpha 1$, $\alpha 2$ and $\alpha 11$ integrins each localized in focal contact-like pattern when cells were plated on collagen I.

3.2. $\alpha 11\beta 1$ -mediated collagen gel contraction is enhanced by IGF-II

The ability of cells to reorganize 3D collagen lattices reflects the contractile activity of the cells. Addition of anti- $\beta 1$ integrin antibody almost completely prevented collagen gel contraction, whereas addition of anti- $\alpha 1$ and anti- $\alpha 2$ antibodies mix was not enough to completely block contraction, indicating that other integrin(s) contributed to collagen gel contraction. Since function-blocking antibodies to $\alpha 11$ are not available, $\alpha 11$ mRNA was downregulated with siRNA, resulting in decreased $\alpha 11$ protein levels. $\alpha 11$ siRNA blocked 10-20 % of the contraction of gingival fibroblasts and PDL fibroblasts and the combined use of $\alpha 11$ siRNA and an $\alpha 2$ function-blocking antibody almost completely abolished the ability of

both cell types to contract collagen lattices. In the present study the influence of IGF-II and PDGF-BB on collagen remodeling properties of gingival fibroblasts and PDL fibroblasts was tested. Addition of IGF-II or PDGF-BB increased contraction of both cell types. A stronger contraction of lattices containing PDL fibroblasts was observed. Western blot analysis showed that in gingival fibroblasts expressing moderate levels of $\alpha 11$ and IGF-II stimulated synthesis of $\alpha 11$ protein in a time-dependent manner. In PDL fibroblasts expressing high levels of $\alpha 11$ to start with, the effect of IGF-II was not so obvious. To determine if PDGF-BB and IGF-II stimulated collagen gel contraction was preferentially $\alpha 1$, $\alpha 2$, or $\alpha 11$ integrin-mediated, we used C2C12 cells stably transfected with comparable levels of individual collagen-binding integrins. Under the conditions used, none of the C2C12-cell types displayed preference for any particular growth factor.

3.3. The repertoire of collagen-binding integrins in healthy and diseased PDL tissue

In a limited number of samples, mRNA and protein levels of collagen-binding integrins were analyzed. Reverse transcriptase PCR analysis showed the presence of mRNA encoding $\alpha 1$, $\alpha 2$, $\alpha 10$ and $\alpha 11$ integrins in both healthy and diseased PDL tissue. The expression levels of integrins differed within healthy and diseased groups themselves. Western blot analysis did not show any consistent difference in $\alpha 11$ levels in healthy or periodontitis-positive samples.

3.4. Sequence analysis of the *ITGA11* promoter

Sequence analysis of the 223 bp upstream nucleotide region of *ITGA11* promoter did not reveal any single nucleotide polymorphisms within the SBS1, SBS2 or EBS regions of the DNA, neither in patients, nor in controls.

Discussion and future perspectives

1. $\alpha 11\beta 1$ integrin-dependent regulation of periodontal ligament function in the erupting mouse incisor (Paper I)

The $\alpha 11$ integrin is most closely related to the $\alpha 10$ integrin. In mouse embryos both subunits display expression patterns restricted to different interstitial connective tissue cells. Comparison with the expression pattern of other collagen-binding integrins has shown that the expression of $\alpha 11$ integrin partially overlaps with expression pattern of $\alpha 2$ and is complementary to expression of $\alpha 10$ integrin [82]. Analysis of mice deficient in $\alpha 1$, $\alpha 2$ or $\alpha 10$ integrin subunits have revealed only mild phenotypes in unchallenged mutant animals [61, 62, 69, 201]. The mild phenotypes of mice deficient in individual collagen-binding integrins suggest compensation in cell-collagen interactions in normal physiological conditions or possible overlapping roles of individual integrins. Both $\alpha 2$ and $\alpha 11$ integrins are co-expressed in the intestine [82] but no phenotype was identified in the intestine in $\alpha 11$ -deficient animals by standard histological analysis. The existence of redundancy mechanism for these two integrins is one possible explanation for the lack of phenotype in the $\alpha 11$ -null intestine.

Even though $\alpha 11$ is expressed in perichondrium, $\alpha 11$ -deficient mice did not display any cartilage defects. Other tissues normally expressing $\alpha 11$ integrin such as cornea, intervertebral disc, intestine and skin did not show any obvious phenotypes in corresponding unchallenged $\alpha 11$ -deficient mice. Instead, the malnutrition and reduced body mass of $\alpha 11$ -deficient mice correlated with the observed tooth phenotype. Supplementing the diet with the soft food prevented malnutrition and increased mortality but mutant mice still remained smaller. This indicates that other defects exist in addition to the tooth phenotype.

It is interesting that $\alpha 11$ tooth phenotype is selective for incisors, which in contrast to molars erupt continuously in rodents. $\alpha 11$ is expressed in the dental follicle mesenchyme of both molars and incisors. But in adult teeth $\alpha 11$ is only expressed in the incisors, which most likely explains the restriction of the tooth phenotype to the incisors. Since molar eruption occurs by different mechanism, the role for collagen-binding integrins in this process is unclear. It is possible that receptors other than collagen-binding integrins can participate in attachment of molar PDL cells to collagen. Such a possibility has already been suggested for the dermal fibroblasts in the skin of $\alpha 1$ -deficient animals [45]. These mice do not show any developmental and structural abnormalities and no $\alpha 2$ integrin up-regulation in embryos was observed. This was also true in adult smooth muscle cells and hepatocytes, which normally

express high levels of $\alpha 1$. Instead, it has been suggested that direct $\alpha 1$ -mediated integrin-collagen interactions are not required in these tissue, and indirect binding to collagen I might be mediated by proteins such as fibronectin [201]. This might also be the case for molar PDL tissue where no collagen-binding integrins are expressed and the tooth eruption process occurs normally.

Except for $\alpha 11\beta 1$ integrin, there are other molecular mechanisms underlying differences between molars and incisors. It has been reported that certain transcription factors expressed during embryonic development, growth factors or MMPs needed during different stages of the tooth eruption process, are differently expressed in molar and incisor PDL. For example, EGF affects only incisor eruption whereas CSF-1 preferentially affects the osteoclasts-dependent stage of molar eruption [202]. In the absence of FGF-10, which supports the stem cell compartment and is indispensable for incisor growth, only incisors, but not molars, are missing [203].

Mice deficient in MMP-14 display affected molar root development and tooth eruption [204-206]. The role of the PDL in rodent incisor eruption is still controversial. It has been suggested that PDL fibroblasts migrate occlusally through the PDL space and create the tractional force pulling the tooth towards the surface of the oral mucosa [207]. Alternatively the eruptive force has been suggested to be provided by the hydrostatic tissue pressure within vascular tissue of the PDL [208]. The $\alpha 11$ -deficient mouse is the first genetic model supporting the tractional force model.

Only partial inhibition of cell adhesion to collagen I has been observed in $\alpha 1$ -null MEFs [201] and $\alpha 2$ -null keratinocytes and dermal fibroblasts [56], indicating the presence of another collagen-binding integrin. *In vitro* studies of $\alpha 11$ -deficient MEFs have shown that the absence of $\alpha 11$ significantly reduces cell attachment to collagen I, spreading on collagen I, and reorganization of collagen I lattices. These findings indicate that $\alpha 11\beta 1$ integrin is a major collagen I receptor on MEFs. Our *in vitro* data imply that incisor PDL fibroblasts in the $\alpha 11$ -deficient mice bind collagen with lower affinity, resulting in weakened tractional force in turn affecting the *continuous incisor eruption*.

The analysis of the PDL tissue showed increased thickness in $\alpha 11$ -deficient animals, the presence of wide acellular cementum and increased number of cell rests of Malassez. Maintaining the correct width of the PDL is an essential function of PDL fibroblasts and such property of these cells might be lost in the absence of $\alpha 11\beta 1$ integrin. Sirius red staining showed that increase in thickness of the PDL occurs due to collagen accumulation in $\alpha 11$ -

deficient mice. Collagen I and MMP synthesis have been shown to be regulated by integrins [122, 133]. $\alpha 1$ -deficient mice display increased collagen synthesis in granulation tissue of the skin wounds but surprisingly no increase in skin thickness was observed due to up-regulation of collagenase (MMP-13) [45]. In the PDL tissue of the $\alpha 11$ -null mice no changes in mRNA levels of collagen I and collagen III were detected by semiquantitative PCR. In the $\alpha 11$ -deficient mice the observed increase in collagen might also occur due to increased RNA stability or due to posttranslational mechanisms. Another explanation for the increased collagen amount might be reduced MMP activity in $\alpha 11$ -null PDL tissue. mRNA analysis of the PDL tissue showed decreased levels of MMP-14 mRNA but increased levels of MMP-9. The observed phenotype in the $\alpha 11$ -deficient mouse is manifested only postnatally when ossification has occurred. Since sectioning of PDL tissue requires lengthy decalcification protocols it does not allow for reliable *in situ* zymography to detect possible changes in MMP activity. Instead, the PCR analysis of MMPs in MEFs cultured within 3D collagen lattices was performed which revealed reduced expression of MMP-13 and MMP-14 mRNA in $\alpha 11$ -deficient cells. Based on the obtained results, we suggest that changed MMP levels are major factors that lead to the observed disturbed collagen turnover in the $\alpha 11$ -null PDL.

In summary, this data indicate a role for $\alpha 11\beta 1$ integrin in incisor tooth eruption. Our data suggest that $\alpha 11\beta 1$ is needed for the PDL fibroblasts to generate tractional forces needed for tooth eruption. *In vitro* studies showing reduced ability of $\alpha 11$ -deficient MEFs to interact with collagen support the phenotype of impaired incisor eruption. In order to verify if re-expression of $\alpha 11$ integrin in the PDL of $\alpha 11$ -deficient mouse can rescue the observed phenotype, $\alpha 11$ -over-expressing transgenic mice have been generated recently. The transgenic animals will be bred with wild type and $\alpha 11$ -deficient mice in order to obtain $\alpha 11^{+/+}$ and $\alpha 11^{-/-}$ offspring carrying transgenic $\alpha 11$ integrin. *In vivo* and *in vitro* analyses similar to those presented in this report will be performed to validate if the $\alpha 11$ -transgene can rescue the $\alpha 11$ -phenotype. It will also be interesting to determine the effect on tissue and cellular level when $\alpha 11$ -transgene is over-expressed in wild type animals in tissues normally not expressing $\alpha 11$.

2. $\alpha 11\beta 1$ integrin-mediated collagen lattice contraction by incisor periodontal ligament fibroblasts requires MMP-13 (Paper II)

The major protein in the PDL is collagen I, and the most abundant cell population is the fibroblast. Finding the cellular collagen attachment mechanism in the PDL can help to understand physiology and pathophysiology of this specific tissue. Cell-collagen interactions

can be mediated by direct binding to collagen via collagen binding integrins [27] and indirect binding via $\alpha\text{v}\beta\text{3}$ integrin-mediated binding bridged via collagen-binding proteins such as fibronectin [209], osteopontin [210], periostin [211] or bigH3 [212]. Even though integrins are well characterized, a clear role for these receptors in developing and mature molar and incisor PDL has not been established yet. The molar PDL fibroblast cell line mPDL-L2 has been characterized before [199] but it still remains unclear how the attachment mechanism works in mouse molar PDL cells. The analysis of mPDL-L2 cells showed lack of all collagen-binding integrins in these cells. This finding suggests that indirect binding to the periostin matrix is involved in adhesion of these cells to the ECM. Periostin is a ligand for integrin $\alpha\text{v}\beta\text{1}$ and $\alpha\text{v}\beta\text{3}$ [211] and it has been reported to bind collagen I [213]. Periostin-deficient mice demonstrate a disturbed structure of both molars and incisors and the phenotype is described as periodontal-disease like. The phenotype develops within three months after birth, suggesting a critical role for periostin in the maintenance of the PDL structure [214]. Interestingly, the tooth phenotype of α11 -deficient animals is manifested at similar age of the animals.

Tooth development is a complex process involving molar and incisor specific transcriptional events. Although molar and incisor PDL fibroblasts have the same ectomesenchymal origin, FGF-10 [203] and $\alpha\text{11}\beta\text{1}$ integrin (**Paper I**) is only present in the adult incisor PDL tissue. Periostin is also detected in incisor PDL tissue, but the mechanism of incisor PDL fibroblast cell attachment seems to be more complex and clearly involves direct cell attachment to collagen I via $\alpha\text{11}\beta\text{1}$ integrin (**Paper I**).

Part of α11 -deficient mouse phenotype is a thickened PDL with increased collagen accumulation. In order to examine the molecular mechanism underlying observed phenotype, it was essential to isolate fibroblasts from incisor PDL. Since we failed to isolate primary cells due to limited amount of PDL tissue, the cells were isolated from α11 -deficient animals carrying temperature sensitive SV40 large T [198]. Isolation of immortalized PDL cells from rodents has already been described before [199, 215, 216]. Molar PDL cell lines from rats and mice carrying temperature sensitive SV40 large T were isolated and characterized [199, 215]. Mouse dental follicle cells obtained from mouse incisor tooth germ, were immortalized by infection with mutant human papilloma virus type 16 E6 [216] resulting in a cell line with presumably incisor-like characteristics. To our knowledge, the incisor PDL cell isolates are the first incisor PDL cells to be isolated from already differentiated adult mouse incisor PDL tissue. The progenitor cells in the dental follicle are thought to contribute to the formation of all periodontal tissues like cementum, PDL and alveolar bone [217]. The PDL cells have been

suggested to have potential to differentiate to odontoblasts or cementoblasts [142, 151]. It has been demonstrated that PDL cells have osteoblast-like properties, including ALP activity [218] and display an ability to form mineralized nodules [219, 220] like osteoblasts. There is no marker typical for the PDL cells but a number of tendon/ligament phenotype- and osteoblastic phenotype-related genes are thought to be involved in the differentiation of the PDL cells. Initial analysis of incisor PDL fibroblasts confirmed expression of such markers like collagens I and XII, periostin, RunX2 and osteopontin. Furthermore, incisor PDL fibroblasts showed increased ALP activity and ability to form mineralized noduli. Based on these findings, we concluded that the cells we isolated have properties of PDL cells. Another important issue regarding the isolated incisor PDL fibroblasts concerns possible side effects resulting from immortalization or clonal effects following isolation. Previously, it has been shown that the immortalization process itself can influence and dysregulate expression of random genes. Infection of keratinocytes with oncogenic mutant of Ras (Ras12) causes switch in $\alpha 3\beta 1$ integrin function, which in turn induced MMP-9 expression in the cells [221]. To exclude clonal effects, at least three independent isolates of control and $\alpha 11$ -deficient incisor PDL fibroblasts were generated and initially screened for expected expression of collagen-binding integrins. Two isolates from each group, with similar integrin expression patterns, were chosen for further analysis. Both independent isolates within each group responded similarly in functional assays such as cell attachment or collagen gel contraction. Analysis of MMP levels indicated similar expression pattern of MMP-13 and similar collagenase activity in both isolates within the group. In the PDL tissue of $\alpha 11$ -deficient animals MMP-9 mRNA was strongly up-regulated (**Paper I**). In our incisor PDL fibroblasts the levels and the activity of MMP-9 differed between isolates from the same group thus suggesting that observed inconsistencies might be side effect of immortalization or clonal effect.

The PDL is a tissue characterized by high mechanical tension. In adult molar and incisor PDL tissue proteins are synthesized and degraded constantly maintaining the tissue homeostasis. 3D collagen lattices are model systems that have been used to mimic the normal microenvironment of tissues [222]. It has been reported that 3D collagen gels induce expression of MMP-13 human skin fibroblasts [122] and addition of exogenous MMP-13 to collagen gels containing skin fibroblasts increased the ability of cells to reorganize collagen matrices [113]. The addition of the MMP inhibitor GM6001 decreased the ability of fibroblasts to contract collagen gel by human osteosarcoma cells [223]. It has also been reported that MMP-13 is a major

MMP regulated by integrins in fibroblasts [113, 122]. ECM proteins like collagen I, collagen XII and periostin can be regulated by mechanical tension in the PDL [224-227]. The regulation of collagen $\alpha 1(I)$ and periostin synthesis by mechanical stress involves autocrine TGF- β loops [226, 227]. TGF- β latent complexes are activated by mechanical stretching [228] and MMP-13 gene expression has been reported to be enhanced by TGF- β [119]. Thus it is possible that the tractional force reduction, due to absence of $\alpha 11$ -integrin, results in decreased levels of active TGF- β causing the drop in MMP-13 levels. In the future it will be important to clarify if such regulation occurs in incisor PDL fibroblasts *in vitro* and *in vivo*. In $\alpha 11$ -deficient PDL, collagen is accumulated and this report suggest that impaired collagen turnover is in part due to disturbed MMP synthesis. Matrix remodeling requires presence of MMPs secreted by fibroblasts embedded in the ECM. Interestingly, western blot analysis of MMP-13 levels showed induction only in $\alpha 11$ -expressing incisor PDL fibroblasts placed in attached collagen gels. Since human skin fibroblasts or MC615 mouse chondrocytic cells placed inside 3D collagen gels up-regulate MMP-13 via two different signaling pathways, resulting in the up-regulation of p38 in skin fibroblasts and ERK in MC615 cells [122, 123], it appears that regulation mechanism of MMP-13 might be cell type specific. It is interesting to note that MMP-13-deficient mice have a bone phenotype but no tooth phenotype. The most trivial explanation is that MMP-13 shows a limited expression in the normal PDL tissue, and only partially contributes to normal tissue homeostasis. Other possible explanations include the existence of redundancy or molecular compensation mechanism. MMP-13 deficient mice show up-regulated MMP-8 during wound healing, suggesting compensation within the MMPs gene family [229]. Another possibility is compensation by MMP-14, which has properties of collagenase. MMP-14 has a clear molar PDL phenotype in a MMP-14-deficient mouse model indicating that MMP-14 is indispensable for the tooth eruption process and collagen turnover [205]. Its role in incisor remains to be defined. In addition to molecular compensation mechanisms, the lack of tooth phenotype of MMP-13-deficient mice might be due to physiological adaptation or compensation mechanism of unknown nature.

Another interesting issue is a clarification of MMP-13 regulation in the context of fibroblast involved in stromal regulation of cancer. MMP-13 is expressed in breast carcinoma, chondrosarcomas, basal cell carcinomas and squamous cell carcinomas of the head and neck [230]. Several proteins are known to be substrates for MMP-13 *in vitro*, including TGF- β and collagen I. TGF- β secreted by carcinoma-associated fibroblasts (CAFs) and acting on the epithelium promotes carcinogenesis [231]. MMP-13 degrades components of basement

membranes promoting tumor invasion and progression of human squamous cell carcinoma and human fibrosarcoma HT1080 cells [230]. MMP-13 is expressed by CAFs cells in human breast cancer, and *in vitro*, breast cancer cells can stimulate fibroblasts to secrete MMP-13. $\alpha 11$ is also expressed by CAFs in lung cancer [232]. It will be interesting to determine if $\alpha 11\beta 1$ mediates part of the MMP-13 synthesis in CAFs.

In summary, the present data suggest that in the incisor PDL fibroblast $\alpha 11\beta 1$ is regulated by mechanical strain. In a future it might be interesting to study the regulation of $\alpha 11$ during molar and incisor tooth movement. Since $\alpha 11\beta 1$ integrin is a major collagen receptor of fibroblasts, its potential role in downstream events in various connective tissue disorders remains to be defined. The expression and activity of MMP-13 in incisor PDL fibroblast is regulated in $\alpha 11\beta 1$ -dependent manner. It remains to be confirmed if MMP-13 is involved in collagen remodeling by incisor PDL fibroblasts *in vivo*.

3. A role for $\alpha 11\beta 1$ integrin in the human periodontal ligament (Paper III)

Since $\alpha 11\beta 1$ integrin is needed during the PDL-driven tooth eruption in mouse and $\alpha 11$ -deficient mice display a PDL phenotype (**Paper I**), it was important to explore a possible role of this integrin in human PDL. The integrin repertoire on human PDL cells has been partially characterized previously [161, 162, 233, 234] but a very few functional analyses of collagen-binding integrins in PDL cells have been performed. Studies by Lallier et al. using antibodies to $\alpha 1$ and $\alpha 2$ to investigate PDL cells interactions with collagen, suggested that other integrins, like $\alpha 10\beta 1$ and $\alpha 11\beta 1$ might be functional and mediate such interactions [162]. Since 3D collagen gel contraction assay has been suggested to mimic tooth eruption [235] and is a convenient assay to analyze collagen receptor function, we used it to evaluate the role of $\alpha 11$ on human PDL fibroblasts.

Analysis of human gingival fibroblasts and PDL fibroblasts showed that three collagen-binding integrins $\alpha 1\beta 1$, $\alpha 2\beta 1$ and $\alpha 11\beta 1$ are expressed at the protein level. Similarly to the functional studies by Lallier et al. only partial inhibition of collagen gel contraction occurred when $\alpha 1$ and $\alpha 2$ integrin-blocking antibodies were used. In our studies the inhibitory effect was most pronounced in gingival fibroblasts expressing lower levels of $\alpha 11$ protein than PDL fibroblasts. Downregulation of $\alpha 11$ by siRNA to $\alpha 11$ mRNA, caused a strongly reduced ability of both cell types to contract collagen lattices. A combination of $\alpha 11$ siRNA treatment with a function-blocking antibody to $\alpha 2$ almost completely abolished the ability of the cells to

contract collagen gels. The obtained results stand in line with previous studies of MEFs indicating $\alpha11\beta1$ as a major integrin mediating collagen gel contraction [81]. Based on these results it was concluded that on fibroblasts $\alpha2\beta1$ and $\alpha11\beta1$ are the major collagen-binding integrins mediating collagen lattice remodeling in human gingival and PDL fibroblasts. ***It is interesting that in adult mice, $\alpha11$ expression is limited only to incisor PDL while in human $\alpha11$ was detected also in adult molar PDL.***

Further detailed analyses are required to investigate if $\alpha11$ levels are increased in inflamed PDL tissue. Growth factors such as PDGF-BB or IGF-II are involved in PDL tissue regeneration after injury [236-238]. In the present study, the contraction of collagen lattices by human gingival fibroblasts and human PDL fibroblasts was stimulated by PDGF-BB and IGF-II. Comparison of the ability of gingival fibroblasts (expressing low $\alpha11$ levels) and PDL fibroblasts (expressing high levels of $\alpha11$) to reorganize collagen gels implied that the strength of contractile activity of cells is governed by the relative levels of collagen-binding integrins. IGF-II appeared to stimulate $\alpha11$ levels in gingival fibroblasts cells whereas such effect was not seen in PDL fibroblasts cells, expressing high levels of $\alpha11$ to start with. The stronger contractile activity of PDL fibroblasts cells in response to IGF-II might reflect a higher level of $\alpha11\beta1$ integrin in these cells. Based on the obtained results, it seems that in both cells types, $\alpha11\beta1$ integrin mediates collagen gel contraction in an IGF-II-dependent manner. A stimulation of $\alpha11\beta1$ integrin during regeneration of PDL might be important in the contraction phase of the granulation tissue. This mechanism might allow more efficient replacement with new non-fibrotic PDL tissue.

In conditions afflicting connective tissues, such as Ehlers-Danlos syndrome or Marfan's syndrome, severe defects of the PDL have been observed [239, 240]. These findings suggested that defects in the PDL might be a contributing factor for increased susceptibility to periodontal disease [239, 240]. More recently, it has been shown that $\alpha\nu\beta6$ can be of importance in preventing of periodontal disease. The $\alpha\nu\beta6$ integrin levels are downregulated in patients suffering from periodontal disease [168]. Recently, it has been shown in a pig model, that $\beta6$ integrin levels are increased in both skin and gingiva during wound healing [241]. Based on these results, it seems that decreased levels of $\beta6$ integrin in periodontal disease might prevent PDL tissue regeneration. In general, genetic background influences susceptibility to different diseases including chronic inflammatory periodontal disease. Most of the gene polymorphism studies in the PDL have focused on cytokines (IL and TNF genes), immune receptors and MMPs since these factors are suggested to contribute to development of

periodontal disease [242]. Genetic polymorphisms within MMP-1, MMP-2 and MMP-3 promoters have been studied in the context of periodontal disease but no associations with increased susceptibility to periodontal disease were found [243, 244]. In mice deficient in $\alpha 11$ integrin no direct PDL fibroblasts-collagen interaction occurs due to lack of any collagen-binding integrin and results in severely disturbed tooth eruption due to decrease of tractional force. The synthesis of collagen is increased in the PDL of such animals. The promoter region is crucial for binding of RNA polymerase and initiation of RNA transcription, and existence of polymorphisms might lead to dysregulated $\alpha 11$ integrin levels, potentially predisposing to periodontal disease. We assumed that decreased expression of integrin $\alpha 11$ in human might result in weakened PDL fibroblast-collagen interactions potentially predisposing to periodontal disease. Thus, it seemed relevant to clarify if there were any polymorphisms within the *ITGA11* promoter. However, no polymorphisms were identified by sequencing 223 bp upstream nucleotide region representing the proximal promoter of *ITGA11*, containing SBS1, SBS2 and EBS regions. The comparison of mRNA and protein expression of $\alpha 11$ in healthy and inflamed PDL tissues showed presence of the $\alpha 11$ integrin in both tissue types but the levels varied within the control and inflamed tissues.

Further studies of human PDL might include comparison of integrin repertoire of primary and permanent teeth to clarify which integrins are involved in cell-collagen interactions and with possible implications for tooth eruption and PDL integrity.

Concluding remarks

The studies included in this thesis attempted to investigate the function of $\alpha 11\beta 1$ integrin *in vivo* and *in vitro*.

First of all, $\alpha 11$ -deficient mice have been generated and the $\alpha 11$ -*null* phenotype has been described. Our data support a model in which tractional force is needed for tooth eruption to occur, and that $\alpha 11\beta 1$ integrin by interaction with the collagen matrix of the PDL provides the “tool” for generating this force. Thus, $\alpha 11$ -deficient mouse is the first genetic model supporting a role for tractional force in the late phase of the incisor eruption process. The presented data also indicate that $\alpha 11\beta 1$ integrin in incisor PDL fibroblasts is a regulator of the PDL width.

Secondly, $\alpha 11$ -deficient immortal mouse was generated which enabled the isolation of fibroblasts from adult incisor PDL. Our data show that $\alpha 11\beta 1$ integrin is a major collagen-binding integrin expressed by these cells, while $\alpha 11$ was not detected on fibroblasts derived from adult molar PDL. Mechanical strain was identified as a factor regulating $\alpha 11$ expression. Furthermore, we could show that $\alpha 11\beta 1$ integrin regulated MMP-13 protein levels. Since MMP-13 is expressed in a number of cancers, it might be important to clarify the molecular mechanism of $\alpha 11$ -mediated regulation of MMP-13.

A final issue addressed in the present study was the role of $\alpha 11\beta 1$ integrin in the human tooth apparatus. For the first time, all collagen-binding integrins have been characterized on the protein level in PDL and gingival fibroblasts. In contrast to mouse PDL, $\alpha 11$ was detected in both incisor and molar adult human PDL tissue. Comparative analysis of healthy and inflamed PDL tissue did not reveal any differences in $\alpha 11$ levels. Based on the $\alpha 11$ -*null* phenotype *in vivo* it was suggested that decreased levels of $\alpha 11$ might predispose to periodontal disease. However, within a limited part of the proximal *ITGA11* promoter no polymorphisms were found in DNA collected from a limited cohort of patients suffering from chronic periodontitis.

References

1. Malesud CJ: **Matrix metalloproteinases (MMPs) in health and disease: an overview.** *Front Biosci* 2006, **11**:1696-1701.
2. Dallas SL, Chen Q, Sivakumar P: **Dynamics of assembly and reorganization of extracellular matrix proteins.** *Curr Top Dev Biol* 2006, **75**:1-24.
3. Debelle L, Tamburro AM: **Elastin: molecular description and function.** *Int J Biochem Cell Biol* 1999, **31**(2):261-272.
4. Handford PA, Downing AK, Reinhardt DP, Sakai LY: **Fibrillin: from domain structure to supramolecular assembly.** *Matrix Biol* 2000, **19**(6):457-470.
5. Rowe RG, Weiss SJ: **Breaching the basement membrane: who, when and how?** *Trends Cell Biol* 2008, **18**(11):560-574.
6. Erickson AC, Couchman JR: **Still more complexity in mammalian basement membranes.** *J Histochem Cytochem* 2000, **48**(10):1291-1306.
7. Docheva D, Popov C, Mutschler W, Schieker M: **Human mesenchymal stem cells in contact with their environment: surface characteristics and the integrin system.** *J Cell Mol Med* 2007, **11**(1):21-38.
8. Takada Y, Ye X, Simon S: **The integrins.** *Genome Biol* 2007, **8**(5):215.
9. Page-McCaw A, Ewald AJ, Werb Z: **Matrix metalloproteinases and the regulation of tissue remodelling.** *Nat Rev Mol Cell Biol* 2007, **8**(3):221-233.
10. Hynes RO: **Integrins: versatility, modulation, and signaling in cell adhesion.** *Cell* 1992, **69**:11-25.
11. Tamkun JW, DeSimone DW, Fonda D, Patel RS, Buck C, Horwitz AF, Hynes RO: **Structure of integrin, a glycoprotein involved in the transmembrane linkage between fibronectin and actin.** *Cell* 1986, **46**(2):271-282.
12. Ingber DE: **Cellular mechanotransduction: putting all the pieces together again.** *Faseb J* 2006, **20**(7):811-827.
13. Humphries JD, Byron A, Humphries MJ: **Integrin ligands at a glance.** *J Cell Sci* 2006, **119**(Pt 19):3901-3903.
14. Hynes RO: **Integrins: bidirectional, allosteric signaling machines.** *Cell* 2002, **110**(6):673-687.
15. Shimaoka M, Takagi J, Springer TA: **Conformational regulation of integrin structure and function.** *Annu Rev Biophys Biomol Struct* 2002, **31**:485-516.
16. Xiong JP, Stehle T, Diefenbach B, Zhang R, Dunker R, Scott DL, Joachimiak A, Goodman SL, Arnaout MA: **Crystal structure of the extracellular segment of integrin alpha Vbeta3.** *Science* 2001, **294**(5541):339-345.
17. Valdramidou D, Humphries MJ, Mould AP: **Distinct roles of beta1 metal ion-dependent adhesion site (MIDAS), adjacent to MIDAS (ADMIDAS), and ligand-associated metal-binding site (LIMBS) cation-binding sites in ligand recognition by integrin alpha2beta1.** *J Biol Chem* 2008, **283**(47):32704-32714.
18. Askari JA, Buckley PA, Mould AP, Humphries MJ: **Linking integrin conformation to function.** *J Cell Sci* 2009, **122**(Pt 2):165-170.
19. Bork P, Doerks T, Springer TA, Snel B: **Domains in plexins: links to integrins and transcription factors.** *Trends Biochem Sci* 1999, **24**(7):261-263.
20. Lin EC, Ratnikov BI, Tsai PM, Gonzalez ER, McDonald S, Pelletier AJ, Smith JW: **Evidence that the integrin beta3 and beta5 subunits contain a metal ion-dependent adhesion site-like motif but lack an I domain.** *J Biol Chem* 1997, **272**(22):14236-14243.

21. Lu C, Takagi J, Springer TA: **Association of the membrane proximal regions of the alpha and beta subunit cytoplasmic domains constrains an integrin in the inactive state.** *J Biol Chem* 2001, **276**(18):14642-14648.
22. Shih DT, Edelman JM, Horwitz AF, Grunwald GB, Buck CA: **Structure/function analysis of the integrin beta 1 subunit by epitope mapping.** *J Cell Biol* 1993, **122**(6):1361-1371.
23. Legate KR, Fassler R: **Mechanisms that regulate adaptor binding to beta-integrin cytoplasmic tails.** *J Cell Sci* 2009, **122**(Pt 2):187-198.
24. Hogervorst F, Kuikman I, von dem Borne AE, Sonnenberg A: **Cloning and sequence analysis of beta-4 cDNA: an integrin subunit that contains a unique 118 kd cytoplasmic domain.** *EMBO J* 1990, **9**(3):765-770.
25. Luo BH, Carman CV, Springer TA: **Structural basis of integrin regulation and signaling.** *Annu Rev Immunol* 2007, **25**:619-647.
26. Gullberg DE, Lundgren-Akerlund E: **Collagen-binding I domain integrins--what do they do?** *Prog Histochem Cytochem* 2002, **37**(1):3-54.
27. Popova SN, Lundgren-Akerlund E, Wiig H, Gullberg D: **Physiology and pathology of collagen receptors.** *Acta Physiol (Oxf)* 2007, **190**(3):179-187.
28. Knight CG, Morton LF, Onley DJ, Peachey AR, Messent AJ, Smethurst PA, Tuckwell DS, Farndale RW, Barnes MJ: **Identification in collagen type I of an integrin $\alpha 2\beta 1$ - binding site containing an essential GER sequence.** *J Biol Chem* 1998, **273**(50):33287-33294.
29. Knight CG, Morton LF, Peachey AR, Tuckwell DS, Farndale RW, Barnes MJ: **The collagen-binding A-domains of integrins alpha(1)beta(1) and alpha(2)beta(1) recognize the same specific amino acid sequence, GFOGER, in native (triple-helical) collagens.** *J Biol Chem* 2000, **275**(1):35-40.
30. Zhang WM, Kapyla J, Puranen JS, Knight CG, Tiger CF, Pentikainen OT, Johnson MS, Farndale RW, Heino J, Gullberg D: **alpha 11beta 1 integrin recognizes the GFOGER sequence in interstitial collagens.** *J Biol Chem* 2003, **278**(9):7270-7277.
31. Jokinen J, Dadu E, Nykvist P, Kapyla J, White DJ, Ivaska J, Vehvilainen P, Reunanen H, Larjava H, Hakkinen L *et al*: **Integrin-mediated cell adhesion to type I collagen fibrils.** *J Biol Chem* 2004, **279**(30):31956-31963.
32. Carter WG, Ryan MC, Gahr PJ: **Epiligrin, a new cell adhesion ligand for integrin alpha 3 beta 1 in epithelial basement membranes.** *Cell* 1991, **65**(4):599-610.
33. Wayner EA, Carter WG: **Identification of multiple cell adhesion receptors for collagen and fibronectin in human fibrosarcoma cells possessing unique alpha and common beta subunits.** *J Cell Biol* 1987, **105**(4):1873-1884.
34. Hodivala-Dilke KM, DiPersio CM, Kreidberg JA, Hynes RO: **Novel roles for alpha3beta1 integrin as a regulator of cytoskeletal assembly and as a trans-dominant inhibitor of integrin receptor function in mouse keratinocytes.** *J Cell Biol* 1998, **142**(5):1357-1369.
35. Hemler ME, Jacobson JG, Brenner MB, Mann D, Strominger JL: **VLA-1: a T cell surface antigen which defines a novel late stage of human T cell activation.** *Eur J Immunol* 1985a, **15**(5):502-508.
36. Hemler ME, Jacobson JG, Strominger JL: **Biochemical characterization of VLA-1 and VLA-2. Cell surface heterodimers on activated T cells.** *J Biol Chem* 1985b, **260**(28):15246-15252.
37. Ignatius MJ, Large TH, Houde M, Tawil JW, Barton A, Esch F, Carbonetto S, Reichardt LF: **Molecular cloning of the rat integrin alpha 1-subunit: a receptor for laminin and collagen.** *J Cell Biol* 1990, **111**(2):709-720.

38. Tuckwell DS, Humphries MJ: **Molecular and cellular biology of integrins.** *Crit Rev Oncol Hematol* 1993, **15**(2):149-171.
39. Tulla M, Lahti M, Puranen JS, Brandt AM, Kapyla J, Domogatskaya A, Salminen TA, Tryggvason K, Johnson MS, Heino J: **Effects of conformational activation of integrin alpha 1I and alpha 2I domains on selective recognition of laminin and collagen subtypes.** *Exp Cell Res* 2008, **314**(8):1734-1743.
40. Eble JA, Golbik R, Mann K, Kuhn K: **The alpha 1 beta 1 integrin recognition site of the basement membrane collagen molecule [alpha 1(IV)]2 alpha 2(IV).** *EMBO J* 1993, **12**(12):4795-4802.
41. Makihira S, Yan W, Ohno S, Kawamoto T, Fujimoto K, Okimura A, Yoshida E, Noshiro M, Hamada T, Kato Y: **Enhancement of cell adhesion and spreading by a cartilage-specific noncollagenous protein, cartilage matrix protein (CMP/Matrilin-1), via integrin alpha1beta1.** *J Biol Chem* 1999, **274**(16):11417-11423.
42. Nykvist P, Tu H, Ivaska J, Kapyla J, Pihlajaniemi T, Heino J: **Distinct recognition of collagen subtypes by alpha(1)beta(1) and alpha(2)beta(1) integrins. Alpha(1)beta(1) mediates cell adhesion to type XIII collagen.** *J Biol Chem* 2000, **275**(11):8255-8261.
43. Voigt S, Gossrau R, Baum O, Loster K, Hofmann W, Reutter W: **Distribution and quantification of alpha 1-integrin subunit in rat organs.** *Histochem J* 1995, **27**(2):123-132.
44. Pozzi A, Wary KK, Giancotti FG, Gardner HA: **Integrin $\alpha 1\beta 1$ mediates a unique collagen-dependent proliferation pathway in vivo.** *J Cell Biol* 1998, **142**:587-594.
45. Gardner H, Broberg A, Pozzi A, Laato M, Heino J: **Absence of integrin alpha1beta1 in the mouse causes loss of feedback regulation of collagen synthesis in normal and wounded dermis.** *J Cell Sci* 1999, **112** (Pt 3):263-272.
46. Zutter MM, Santoro SA: **Widespread histologic distribution of the alpha 2 beta 1 integrin cell-surface collagen receptor.** *Am J Pathol* 1990, **137**(1):113-120.
47. Saelman EU, Nieuwenhuis HK, Hese KM, de Groot PG, Heijnen HF, Sage EH, Williams S, McKeown L, Gralnick HR, Sixma JJ: **Platelet adhesion to collagen types I through VIII under conditions of stasis and flow is mediated by GPIa/IIa (alpha 2 beta 1-integrin).** *Blood* 1994, **83**(5):1244-1250.
48. Tuckwell DS, Reid KB, Barnes MJ, Humphries MJ: **The A-domain of integrin alpha 2 binds specifically to a range of collagens but is not a general receptor for the collagenous motif.** *Eur J Biochem* 1996, **241**(3):732-739.
49. Kern A, Eble J, Golbik R, Kuhn K: **Interaction of type IV collagen with the isolated integrins alpha 1 beta 1 and alpha 2 beta 1.** *Eur J Biochem* 1993, **215**(1):151-159.
50. Kapyla J, Jaalinoja J, Tulla M, Ylostalo J, Nissinen L, Viitasalo T, Vehvilainen P, Marjomaki V, Nykvist P, Saamanen AM *et al*: **The fibril-associated collagen IX provides a novel mechanism for cell adhesion to cartilaginous matrix.** *J Biol Chem* 2004, **279**(49):51677-51687.
51. Eble JA, Kassner A, Niland S, Morgelin M, Grifka J, Grassel S: **Collagen XVI harbors an integrin alpha1 beta1 recognition site in its C-terminal domains.** *J Biol Chem* 2006, **281**(35):25745-25756.
52. Luckman SP, Rees E, Kwan AP: **Partial characterization of cell-type X collagen interactions.** *Biochem J* 2003, **372**(Pt 2):485-493.
53. Tulla M, Pentikainen OT, Viitasalo T, Kapyla J, Impola U, Nykvist P, Nissinen L, Johnson MS, Heino J: **Selective binding of collagen subtypes by integrin alpha 1I, alpha 2I, and alpha 10I domains.** *J Biol Chem* 2001, **276**(51):48206-48212.
54. Klein CE, Dressel D, Steinmayer T, Mauch C, Eckes B, Krieg T, Bankert RB, Weber L: **Integrin alpha 2 beta 1 is upregulated in fibroblasts and highly aggressive**

- melanoma cells in three-dimensional collagen lattices and mediates the reorganization of collagen I fibrils. *J Cell Biol* 1991, **115**(5):1427-1436.
55. Langholz O, Rockel D, Mauch C, Kozłowska E, Bank I, Krieg T, Eckes B: **Collagen and collagenase gene expression in three-dimensional collagen lattices are differentially regulated by alpha 1 beta 1 and alpha 2 beta 1 integrins.** *J Cell Biol* 1995, **131**(6 Pt 2):1903-1915.
 56. Zhang ZG, Bothe I, Hirche F, Zweers M, Gullberg D, Pfitzer G, Krieg T, Eckes B, Aumailley M: **Interactions of primary fibroblasts and keratinocytes with extracellular matrix proteins: contribution of alpha2beta1 integrin.** *J Cell Sci* 2006, **119**(Pt 9):1886-1895.
 57. Li S, Van Den Diepstraten C, D'Souza SJ, Chan BM, Pickering JG: **Vascular smooth muscle cells orchestrate the assembly of type I collagen via alpha2beta1 integrin, RhoA, and fibronectin polymerization.** *Am J Pathol* 2003, **163**(3):1045-1056.
 58. Velling T, Risteli J, Wennerberg K, Mosher DF, Johansson S: **Polymerization of type I and III collagens is dependent on fibronectin and enhanced by integrins alpha 11beta 1 and alpha 2beta 1.** *J Biol Chem* 2002, **277**(40):37377-37381.
 59. Klekotka PA, Santoro SA, Ho A, Dowdy SF, Zutter MM: **Mammary epithelial cell-cycle progression via the alpha(2)beta(1) integrin: unique and synergistic roles of the alpha(2) cytoplasmic domain.** *Am J Pathol* 2001b, **159**(3):983-992.
 60. Klekotka PA, Santoro SA, Wang H, Zutter MM: **Specific residues within the alpha 2 integrin subunit cytoplasmic domain regulate migration and cell cycle progression via distinct MAPK pathways.** *J Biol Chem* 2001c, **276**(34):32353-32361.
 61. Chen J, Diacovo TG, Grenache DG, Santoro SA, Zutter MM: **The alpha(2) integrin subunit-deficient mouse: a multifaceted phenotype including defects of branching morphogenesis and hemostasis.** *Am J Pathol* 2002, **161**(1):337-344.
 62. Holtkotter O, Nieswandt B, Smyth N, Muller W, Hafner M, Schulte V, Krieg T, Eckes B: **Integrin alpha 2-deficient mice develop normally, are fertile, but display partially defective platelet interaction with collagen.** *J Biol Chem* 2002, **277**(13):10789-10794.
 63. Sarratt KL, Chen H, Zutter MM, Santoro SA, Hammer DA, Kahn ML: **GPVI and alpha2beta1 play independent critical roles during platelet adhesion and aggregate formation to collagen under flow.** *Blood* 2005, **106**(4):1268-1277.
 64. Kuijpers MJ, Pozgajova M, Cosemans JM, Munnix IC, Eckes B, Nieswandt B, Heemskerk JW: **Role of murine integrin alpha2beta1 in thrombus stabilization and embolization: contribution of thromboxane A2.** *Thromb Haemost* 2007, **98**(5):1072-1080.
 65. Grenache DG, Zhang Z, Wells LE, Santoro SA, Davidson JM, Zutter MM: **Wound healing in the alpha2beta1 integrin-deficient mouse: altered keratinocyte biology and dysregulated matrix metalloproteinase expression.** *J Invest Dermatol* 2007, **127**(2):455-466.
 66. Zweers MC, Davidson JM, Pozzi A, Hallinger R, Janz K, Quondamatteo F, Leutgeb B, Krieg T, Eckes B: **Integrin alpha2beta1 is required for regulation of murine wound angiogenesis but is dispensable for reepithelialization.** *J Invest Dermatol* 2007, **127**(2):467-478.
 67. Camper L, Hellman U, Lundgren-Akerlund E: **Isolation, cloning, and sequence analysis of the integrin subunit α_{10} , a β_1 -associated collagen binding integrin expressed on chondrocytes.** *J Biol Chem* 1998, **273**(32):20383-20389.
 68. Camper L, Holmvall K, Wangnerud C, Aszodi A, Lundgren-Akerlund E: **Distribution of the collagen-binding integrin alpha10beta1 during mouse development.** *Cell Tissue Res* 2001, **306**(1):107-116.

69. Bengtsson T, Aszodi A, Nicolae C, Hunziker EB, Lundgren-Akerlund E, Fassler R: **Loss of $\alpha 10\beta 1$ integrin expression leads to moderate dysfunction of growth plate chondrocytes.** *J Cell Sci* 2005, **118**(Pt 5):929-936.
70. Velling T, Kusche-Gullberg M, Sejersen T, Gullberg D: **cDNA cloning and chromosomal localization of human $\alpha 11$ integrin. A collagen-binding, I domain-containing, $\beta 1$ -associated integrin α -chain present in muscle tissues.** *J Biol Chem* 1999, **274**(36):25735-25742.
71. Gullberg D, Velling T, Sjoberg G, Sejersen T: **Up-regulation of a novel integrin alpha-chain (αmt) on human fetal myotubes.** *Dev Dyn* 1995, **204**:57-65.
72. Bengtsson T, Camper L, Schnell M, Lundgren-Akerlund E: **Characterization of the mouse integrin subunit $\alpha 10$ gene and comparison with its human homologue. Genomic structure, chromosomal localization and identification of splice variants.** *Matrix Biol* 2001, **20**(8):565-576.
73. Lehnert K, Ni J, Leung E, Gough SM, Weaver A, Yao WP, Liu D, Wang SX, Morris CM, Krissansen GW: **Cloning, sequence analysis, and chromosomal localization of the novel human integrin $\alpha 11$ subunit (ITGA11).** *Genomics* 1999, **60**(2):179-187.
74. Zhang W-M, Bergman C, Velling T, Kusche-Gullberg M, Gullberg D: **Analysis of the human integrin $\alpha 11$ gene (ITGA11) and its promoter.** *Matrix Biol* 2002, **21**:513-523.
75. Ziober BL, Kramer RH: **Identification and characterization of the cell type-specific and developmentally regulated $\alpha 7$ integrin gene promoter.** *J Biol Chem* 1996, **271**(37):22915-22922.
76. Lu N, Heuchel R, Barczyk M, Zhang WM, Gullberg D: **Tandem Sp1/Sp3 sites together with an Ets-1 site cooperate to mediate alpha11 integrin chain expression in mesenchymal cells.** *Matrix Biol* 2006, **25**(2):118-129.
77. Jacquelin B, Tarantino MD, Kritzik M, Rozenshteyn D, Koziol JA, Nurden AT, Kunicki TJ: **Allele-dependent transcriptional regulation of the human integrin $\alpha 2$ gene.** *Blood* 2001, **97**(6):1721-1726.
78. Wenke AK, Kjellman C, Lundgren-Akerlund E, Uhlmann C, Haass NK, Herlyn M, Bosserhoff AK: **Expression of integrin alpha10 is induced in malignant melanoma.** *Cell Oncol* 2007, **29**(5):373-386.
79. Wenke AK, Rothhammer T, Moser M, Bosserhoff AK: **Regulation of integrin alpha10 expression in chondrocytes by the transcription factors AP-2epsilon and Ets-1.** *Biochem Biophys Res Commun* 2006, **345**(1):495-501.
80. Zutter MM, Ryan EE, Painter AD: **Binding of phosphorylated Sp1 protein to tandem Sp1 binding sites regulates alpha2 integrin gene core promoter activity.** *Blood* 1997, **90**(2):678-689.
81. Tiger C-F, Fougousse F, Grundström G, Velling T, Gullberg D: **$\alpha 11\beta 1$ integrin is a receptor for interstitial collagens involved in cell migration and collagen reorganization on mesenchymal non-muscle cells.** *Dev Biol* 2001, **237**:116-129.
82. Popova SN, Rodriguez-Sanchez B, Liden A, Betsholtz C, Van Den Bos T, Gullberg D: **The mesenchymal $\alpha 11\beta 1$ integrin attenuates PDGF-BB-stimulated chemotaxis of embryonic fibroblasts on collagens.** *Dev Biol* 2004, **270**(2):427-442.
83. Meek K, Fullwood N: **Corneal and scleral collagens.** *Micron* 2001, **32**:261-272.
84. Caswell CC, Barczyk M, Keene DR, Lukomska E, Gullberg DE, Lukomski S: **Identification of the first prokaryotic collagen sequence motif that mediates binding to human collagen receptors, integrins alpha2beta1 and alpha11beta1.** *J Biol Chem* 2008, **283**(52):36168-36175.

85. Egeblad M, Werb Z: **New functions for the matrix metalloproteinases in cancer progression.** *Nat Rev Cancer* 2002, **2**(3):161-174.
86. Cawston TE, Wilson AJ: **Understanding the role of tissue degrading enzymes and their inhibitors in development and disease.** *Best Pract Res Clin Rheumatol* 2006, **20**(5):983-1002.
87. Steffensen B, Hakkinen L, Larjava H: **Proteolytic events of wound-healing--coordinated interactions among matrix metalloproteinases (MMPs), integrins, and extracellular matrix molecules.** *Crit Rev Oral Biol Med* 2001, **12**(5):373-398.
88. Pilcher BK, Dumin JA, Sudbeck BD, Krane SM, Welgus HG, Parks WC: **The activity of collagenase-1 is required for keratinocyte migration on a type I collagen matrix.** *J Cell Biol* 1997, **137**(6):1445-1457.
89. Xu J, Clark RA, Parks WC: **p38 mitogen-activated kinase is a bidirectional regulator of human fibroblast collagenase-1 induction by three-dimensional collagen lattices.** *Biochem J* 2001, **355**(Pt 2):437-447.
90. Sternlicht MD, Werb Z: **How matrix metalloproteinases regulate cell behavior.** *Annu Rev Cell Dev Biol* 2001, **17**:463-516.
91. Schneider F, Sukhova GK, Aikawa M, Canner J, Gerdes N, Tang SM, Shi GP, Apte SS, Libby P: **Matrix-metalloproteinase-14 deficiency in bone-marrow-derived cells promotes collagen accumulation in mouse atherosclerotic plaques.** *Circulation* 2008, **117**(7):931-939.
92. Holmbeck K, Bianco P, Caterina J, Yamada S, Kromer M, Kuznetsov SA, Mankani M, Robey PG, Poole AR, Pidoux I *et al*: **MT1-MMP-deficient mice develop dwarfism, osteopenia, arthritis, and connective tissue disease due to inadequate collagen turnover.** *Cell* 1999, **99**(1):81-92.
93. Oblander SA, Zhou Z, Galvez BG, Starcher B, Shannon JM, Durbeej M, Arroyo AG, Tryggvason K, Apte SS: **Distinctive functions of membrane type 1 matrix-metalloprotease (MT1-MMP or MMP-14) in lung and submandibular gland development are independent of its role in pro-MMP-2 activation.** *Dev Biol* 2005, **277**(1):255-269.
94. Zhou Z, Apte SS, Soininen R, Cao R, Baaklini GY, Rauser RW, Wang J, Cao Y, Tryggvason K: **Impaired endochondral ossification and angiogenesis in mice deficient in membrane-type matrix metalloproteinase I.** *Proc Natl Acad Sci U S A* 2000, **97**(8):4052-4057.
95. Ingvarsen S, Madsen DH, Hillig T, Lund LR, Holmbeck K, Behrendt N, Engelholm LH: **Dimerization of endogenous MT1-MMP is a regulatory step in the activation of the 72-kDa gelatinase MMP-2 on fibroblasts and fibrosarcoma cells.** *Biol Chem* 2008, **389**(7):943-953.
96. Brew K, Dinakarandian D, Nagase H: **Tissue inhibitors of metalloproteinases: evolution, structure and function.** *Biochim Biophys Acta* 2000, **1477**(1-2):267-283.
97. Tchetverikov I, Verzijl N, Huizinga TW, TeKoppele JM, Hanemaaijer R, DeGroot J: **Active MMPs captured by alpha 2 macroglobulin as a marker of disease activity in rheumatoid arthritis.** *Clin Exp Rheumatol* 2003, **21**(6):711-718.
98. Birkedal-Hansen H, Moore WG, Bodden MK, Windsor LJ, Birkedal-Hansen B, DeCarlo A, Engler JA: **Matrix metalloproteinases: a review.** *Crit Rev Oral Biol Med* 1993, **4**(2):197-250.
99. Liu X, Wu H, Byrne M, Jeffrey J, Krane S, Jaenisch R: **A targeted mutation at the known collagenase cleavage site in mouse type I collagen impairs tissue remodeling.** *J Cell Biol* 1995, **130**(1):227-237.
100. Welgus HG, Kobayashi DK, Jeffrey JJ: **The collagen substrate specificity of rat uterus collagenase.** *J Biol Chem* 1983, **258**(23):14162-14165.

101. Sorsa T, Tjaderhane L, Konttinen YT, Lauhio A, Salo T, Lee HM, Golub LM, Brown DL, Mantyla P: **Matrix metalloproteinases: contribution to pathogenesis, diagnosis and treatment of periodontal inflammation.** *Ann Med* 2006, **38**(5):306-321.
102. Aimes RT, Quigley JP: **Matrix metalloproteinase-2 is an interstitial collagenase. Inhibitor-free enzyme catalyzes the cleavage of collagen fibrils and soluble native type I collagen generating the specific 3/4- and 1/4-length fragments.** *J Biol Chem* 1995, **270**(11):5872-5876.
103. Itoh Y: **MT1-MMP: a key regulator of cell migration in tissue.** *IUBMB Life* 2006, **58**(10):589-596.
104. Li XY, Ota I, Yana I, Sabeh F, Weiss SJ: **Molecular dissection of the structural machinery underlying the tissue-invasive activity of membrane type-1 matrix metalloproteinase.** *Mol Biol Cell* 2008, **19**(8):3221-3233.
105. Szabova L, Chrysovergis K, Yamada SS, Holmbeck K: **MT1-MMP is required for efficient tumor dissemination in experimental metastatic disease.** *Oncogene* 2008, **27**(23):3274-3281.
106. Takino T, Watanabe Y, Matsui M, Miyamori H, Kudo T, Seiki M, Sato H: **Membrane-type 1 matrix metalloproteinase modulates focal adhesion stability and cell migration.** *Exp Cell Res* 2006, **312**(8):1381-1389.
107. Freije JM, Diez-Itza I, Balbin M, Sanchez LM, Blasco R, Tolivia J, Lopez-Otin C: **Molecular cloning and expression of collagenase-3, a novel human matrix metalloproteinase produced by breast carcinomas.** *J Biol Chem* 1994, **269**(24):16766-16773.
108. Johansson N, Saarialho-Kere U, Airola K, Herva R, Nissinen L, Westermarck J, Vuorio E, Heino J, Kahari VM: **Collagenase-3 (MMP-13) is expressed by hypertrophic chondrocytes, periosteal cells, and osteoblasts during human fetal bone development.** *Dev Dyn* 1997, **208**(3):387-397.
109. Ala-aho R, Kahari VM: **Collagenases in cancer.** *Biochimie* 2005, **87**(3-4):273-286.
110. Kiili M, Cox SW, Chen HY, Wahlgren J, Maisi P, Eley BM, Salo T, Sorsa T: **Collagenase-2 (MMP-8) and collagenase-3 (MMP-13) in adult periodontitis: molecular forms and levels in gingival crevicular fluid and immunolocalisation in gingival tissue.** *J Clin Periodontol* 2002, **29**(3):224-232.
111. Konttinen YT, Salo T, Hanemaaijer R, Valleala H, Sorsa T, Sutinen M, Ceponis A, Xu JW, Santavirta S, Teronen O *et al*: **Collagenase-3 (MMP-13) and its activators in rheumatoid arthritis: localization in the pannus-hard tissue junction and inhibition by alendronate.** *Matrix Biol* 1999, **18**(4):401-412.
112. Tervahartiala T, Pirila E, Ceponis A, Maisi P, Salo T, Tuter G, Kallio P, Tornwall J, Srinivas R, Konttinen YT *et al*: **The in vivo expression of the collagenolytic matrix metalloproteinases (MMP-2, -8, -13, and -14) and matrilysin (MMP-7) in adult and localized juvenile periodontitis.** *J Dent Res* 2000, **79**(12):1969-1977.
113. Toriseva MJ, Ala-aho R, Karvinen J, Baker AH, Marjomaki VS, Heino J, Kahari VM: **Collagenase-3 (MMP-13) enhances remodeling of three-dimensional collagen and promotes survival of human skin fibroblasts.** *J Invest Dermatol* 2007, **127**(1):49-59.
114. Reboul P, Pelletier JP, Tardif G, Cloutier JM, Martel-Pelletier J: **The new collagenase, collagenase-3, is expressed and synthesized by human chondrocytes but not by synoviocytes. A role in osteoarthritis.** *J Clin Invest* 1996, **97**(9):2011-2019.
115. Liacini A, Sylvester J, Li WQ, Huang W, Dehnade F, Ahmad M, Zafarullah M: **Induction of matrix metalloproteinase-13 gene expression by TNF-alpha is mediated by MAP kinases, AP-1, and NF-kappaB transcription factors in articular chondrocytes.** *Exp Cell Res* 2003, **288**(1):208-217.

116. Mengshol JA, Vincenti MP, Coon CI, Barchowsky A, Brinckerhoff CE: **Interleukin-1 induction of collagenase 3 (matrix metalloproteinase 13) gene expression in chondrocytes requires p38, c-Jun N-terminal kinase, and nuclear factor kappaB: differential regulation of collagenase 1 and collagenase 3.** *Arthritis Rheum* 2000, **43**(4):801-811.
117. Rossa C, Jr., Liu M, Patil C, Kirkwood KL: **MKK3/6-p38 MAPK negatively regulates murine MMP-13 gene expression induced by IL-1beta and TNF-alpha in immortalized periodontal ligament fibroblasts.** *Matrix Biol* 2005, **24**(7):478-488.
118. Johansson N, Ala-aho R, Uitto V, Grenman R, Fusenig NE, Lopez-Otin C, Kahari VM: **Expression of collagenase-3 (MMP-13) and collagenase-1 (MMP-1) by transformed keratinocytes is dependent on the activity of p38 mitogen-activated protein kinase.** *J Cell Sci* 2000, **113 Pt 2**:227-235.
119. Johansson N, Westermarck J, Leppa S, Hakkinen L, Koivisto L, Lopez-Otin C, Peltonen J, Heino J, Kahari VM: **Collagenase 3 (matrix metalloproteinase 13) gene expression by HaCaT keratinocytes is enhanced by tumor necrosis factor alpha and transforming growth factor beta.** *Cell Growth Differ* 1997, **8**(2):243-250.
120. Ravanti L, Hakkinen L, Larjava H, Saarialho-Kere U, Foschi M, Han J, Kahari VM: **Transforming growth factor-beta induces collagenase-3 expression by human gingival fibroblasts via p38 mitogen-activated protein kinase.** *J Biol Chem* 1999, **274**(52):37292-37300.
121. Sun HB, Yokota H: **Altered mRNA level of matrix metalloproteinase-13 in MH7A synovial cells under mechanical loading and unloading.** *Bone* 2001, **28**(4):399-403.
122. Ravanti L, Heino J, Lopez-Otin C, Kahari VM: **Induction of collagenase-3 (MMP-13) expression in human skin fibroblasts by three-dimensional collagen is mediated by p38 mitogen-activated protein kinase.** *J Biol Chem* 1999, **274**(4):2446-2455.
123. Ronziere MC, Aubert-Foucher E, Gouttenoire J, Bernaud J, Herbage D, Mallein-Gerin F: **Integrin alpha1beta1 mediates collagen induction of MMP-13 expression in MC615 chondrocytes.** *Biochim Biophys Acta* 2005, **1746**(1):55-64.
124. Leonardi R, Talic NF, Loreto C: **MMP-13 (collagenase 3) immunolocalisation during initial orthodontic tooth movement in rats.** *Acta Histochem* 2007, **109**(3):215-220.
125. Takahashi I, Nishimura M, Onodera K, Bae JW, Mitani H, Okazaki M, Sasano Y: **Expression of MMP-8 and MMP-13 genes in the periodontal ligament during tooth movement in rats.** *J Dent Res* 2003, **82**(8):646-651.
126. Stickens D, Behonick DJ, Ortega N, Heyer B, Hartenstein B, Yu Y, Fosang AJ, Schorpp-Kistner M, Angel P, Werb Z: **Altered endochondral bone development in matrix metalloproteinase 13-deficient mice.** *Development* 2004, **131**(23):5883-5895.
127. Kennedy AM, Inada M, Krane SM, Christie PT, Harding B, Lopez-Otin C, Sanchez LM, Pannett AA, Dearlove A, Hartley C *et al*: **MMP13 mutation causes spondyloepimetaphyseal dysplasia, Missouri type (SEMD(MO)).** *J Clin Invest* 2005, **115**(10):2832-2842.
128. Dumin JA, Dickeson SK, Stricker TP, Bhattacharyya-Pakrasi M, Roby JD, Santoro SA, Parks WC: **Pro-collagenase-1 (matrix metalloproteinase-1) binds the alpha(2)beta(1) integrin upon release from keratinocytes migrating on type I collagen.** *J Biol Chem* 2001, **276**(31):29368-29374.
129. Steffensen B, Bigg HF, Overall CM: **The involvement of the fibronectin type II-like modules of human gelatinase A in cell surface localization and activation.** *J Biol Chem* 1998, **273**(32):20622-20628.

-
130. Ogier C, Bernard A, Chollet AM, T LED, Hanessian S, Charton G, Khrestchatsky M, Rivera S: **Matrix metalloproteinase-2 (MMP-2) regulates astrocyte motility in connection with the actin cytoskeleton and integrins.** *Glia* 2006, **54**(4):272-284.
 131. Galvez BG, Matias-Roman S, Yanez-Mo M, Sanchez-Madrid F, Arroyo AG: **ECM regulates MT1-MMP localization with beta1 or alphavbeta3 integrins at distinct cell compartments modulating its internalization and activity on human endothelial cells.** *J Cell Biol* 2002, **159**(3):509-521.
 132. Pozzi A, Moberg PE, Miles LA, Wagner S, Soloway P, Gardner HA: **Elevated matrix metalloprotease and angiostatin levels in integrin α 1 knockout mice cause reduced tumor vascularization.** *Proc Natl Acad Sci U S A* 2000, **97**(5):2202-2207.
 133. Riikonen T, Westermarck J, Koivisto L, Broberg A, Kahari VM, Heino J: **Integrin α 2 β 1 is a positive regulator of collagenase (MMP-1) and collagen α 1(I) gene expression.** *J Biol Chem* 1995, **270**(22):13548-13552.
 134. Cosgrove D, Meehan DT, Delimont D, Pozzi A, Chen X, Rodgers KD, Tempero RM, Zallocchi M, Rao VH: **Integrin alpha1beta1 regulates matrix metalloproteinases via P38 mitogen-activated protein kinase in mesangial cells: implications for Alport syndrome.** *Am J Pathol* 2008, **172**(3):761-773.
 135. Wolf K, Wu YI, Liu Y, Geiger J, Tam E, Overall C, Stack MS, Friedl P: **Multi-step pericellular proteolysis controls the transition from individual to collective cancer cell invasion.** *Nat Cell Biol* 2007, **9**(8):893-904.
 136. Sabeih F, Shimizu-Hirota R, Weiss SJ: **Protease-dependent versus -independent cancer cell invasion programs: three-dimensional amoeboid movement revisited.** *J Cell Biol* 2009, **185**(1):11-19.
 137. De Wever O, Nguyen QD, Van Hoorde L, Bracke M, Bruyneel E, Gespach C, Mareel M: **Tenascin-C and SF/HGF produced by myofibroblasts in vitro provide convergent pro-invasive signals to human colon cancer cells through RhoA and Rac.** *FASEB J* 2004, **18**(9):1016-1018.
 138. Orimo A, Weinberg RA: **Stromal fibroblasts in cancer: a novel tumor-promoting cell type.** *Cell Cycle* 2006, **5**(15):1597-1601.
 139. Gaggioli C, Hooper S, Hidalgo-Carcedo C, Grosse R, Marshall JF, Harrington K, Sahai E: **Fibroblast-led collective invasion of carcinoma cells with differing roles for RhoGTPases in leading and following cells.** *Nat Cell Biol* 2007, **9**(12):1392-1400.
 140. Bartold PM, Narayanan AS: **Molecular and cell biology of healthy and diseased periodontal tissues.** *Periodontol 2000* 2006, **40**:29-49.
 141. McCulloch CA, Lekic P, McKee MD: **Role of physical forces in regulating the form and function of the periodontal ligament.** *Periodontol 2000* 2000, **24**:56-72.
 142. McCulloch CA, Melcher AH: **Cell density and cell generation in the periodontal ligament of mice.** *Am J Anat* 1983, **167**(1):43-58.
 143. D'Errico JA, Ouyang H, Berry JE, MacNeil RL, Strayhorn C, Imperiale MJ, Harris NL, Goldberg H, Somerman MJ: **Immortalized cementoblasts and periodontal ligament cells in culture.** *Bone* 1999, **25**(1):39-47.
 144. Lindhe J, Lang N, Karring T: **Clinical periodontal and implant dentistry**, 5th edn; 2008.
 145. McCulloch CA: **Progenitor cell populations in the periodontal ligament of mice.** *Anat Rec* 1985, **211**(3):258-262.
 146. Seo BM, Miura M, Gronthos S, Bartold PM, Batouli S, Brahim J, Young M, Robey PG, Wang CY, Shi S: **Investigation of multipotent postnatal stem cells from human periodontal ligament.** *Lancet* 2004, **364**(9429):149-155.
 147. Bartold PM, Shi S, Gronthos S: **Stem cells and periodontal regeneration.** *Periodontol 2000* 2006, **40**:164-172.

148. Sodek J, McKee MD: **Molecular and cellular biology of alveolar bone.** *Periodontol 2000* 2000, **24**:99-126.
149. Sodek J: **A comparison of the rates of synthesis and turnover of collagen and non-collagen proteins in adult rat periodontal tissues and skin using a microassay.** *Arch Oral Biol* 1977, **22**(12):655-665.
150. McCulloch CA, Bordin S: **Role of fibroblast subpopulations in periodontal physiology and pathology.** *J Periodontal Res* 1991, **26**(3 Pt 1):144-154.
151. Roberts WE, Mozsary PG, Klingler E: **Nuclear size as a cell-kinetic marker for osteoblast differentiation.** *Am J Anat* 1982, **165**(4):373-384.
152. Bosshardt DD: **Are cementoblasts a subpopulation of osteoblasts or a unique phenotype?** *J Dent Res* 2005, **84**(5):390-406.
153. Bartold PM, Walsh LJ, Narayanan AS: **Molecular and cell biology of the gingiva.** *Periodontol 2000* 2000, **24**:28-55.
154. Karimbux NY, Rosenblum ND, Nishimura I: **Site-specific expression of collagen I and XII mRNAs in the rat periodontal ligament at two developmental stages.** *J Dent Res* 1992, **71**(7):1355-1362.
155. Saito K, Mori S, Iwakura M, Sakamoto S: **Immunohistochemical localization of transforming growth factor beta, basic fibroblast growth factor and heparan sulphate glycosaminoglycan in gingival hyperplasia induced by nifedipine and phenytoin.** *J Periodontal Res* 1996, **31**(8):545-555.
156. Hakkinen L, Oksala O, Salo T, Rahemtulla F, Larjava H: **Immunohistochemical localization of proteoglycans in human periodontium.** *J Histochem Cytochem* 1993, **41**(11):1689-1699.
157. Zhang X, Schuppan D, Becker J, Reichart P, Gelderblom HR: **Distribution of undulin, tenascin, and fibronectin in the human periodontal ligament and cementum: comparative immunoelectron microscopy with ultra-thin cryosections.** *J Histochem Cytochem* 1993, **41**(2):245-251.
158. Groeneveld MC, Van den Bos T, Everts V, Beertsen W: **Cell-bound and extracellular matrix-associated alkaline phosphatase activity in rat periodontal ligament.** *Experimental Oral Biology Group. J Periodontal Res* 1996, **31**(1):73-79.
159. Alenghat FJ, Ingber DE: **Mechanotransduction: all signals point to cytoskeleton, matrix, and integrins.** *Sci STKE* 2002, **2002**(119):PE6.
160. Bolcato-Bellemin AL, Elkaim R, Abehsera A, Fausser JL, Haikel Y, Tenenbaum H: **Expression of mRNAs encoding for alpha and beta integrin subunits, MMPs, and TIMPs in stretched human periodontal ligament and gingival fibroblasts.** *J Dent Res* 2000, **79**(9):1712-1716.
161. Palaiologou AA, Yukna RA, Moses R, Lallier TE: **Gingival, dermal, and periodontal ligament fibroblasts express different extracellular matrix receptors.** *J Periodontol* 2001, **72**(6):798-807.
162. Lallier TE, Miner QW, Jr., Sonnier J, Spencer A: **A simple cell motility assay demonstrates differential motility of human periodontal ligament fibroblasts, gingival fibroblasts, and pre-osteoblasts.** *Cell Tissue Res* 2007, **328**(2):339-354.
163. Shimomura T, Jia F, Niyibizi C, Woo SL: **Antisense oligonucleotides reduce synthesis of procollagen alpha1 (V) chain in human patellar tendon fibroblasts: potential application in healing ligaments and tendons.** *Connect Tissue Res* 2003, **44**(3-4):167-172.
164. Werfully S, Areibi G, Toner M, Bergquist J, Walker J, Renvert S, Claffey N: **Tensile strength, histological and immunohistochemical observations of periodontal wound healing in the dog.** *J Periodontal Res* 2002, **37**(5):366-374.

165. Bumann A, Carvalho RS, Schwarzer CL, Yen EH: **Collagen synthesis from human PDL cells following orthodontic tooth movement.** *Eur J Orthod* 1997, **19**(1):29-37.
166. Berendsen AD, Bronckers AL, Smit TH, Walboomers XF, Everts V: **Collagen type V enhances matrix contraction by human periodontal ligament fibroblasts seeded in three-dimensional collagen gels.** *Matrix Biol* 2006, **25**(8):515-522.
167. Tsuruga E, Sato A, Ueki T, Nakashima K, Nakatomi Y, Ishikawa H, Yajima T, Sawa Y: **Integrin alphavbeta3 regulates microfibril assembly in human periodontal ligament cells.** *Tissue Cell* 2009, **41**(2):85-89.
168. Ghannad F, Nica D, Fulle MI, Grenier D, Putnins EE, Johnston S, Eslami A, Koivisto L, Jiang G, McKee MD *et al*: **Absence of alphavbeta6 integrin is linked to initiation and progression of periodontal disease.** *Am J Pathol* 2008, **172**(5):1271-1286.
169. Marks SC, Jr., Schroeder HE: **Tooth eruption: theories and facts.** *Anat Rec* 1996, **245**(2):374-393.
170. Fujita T, Shiba H, Sakata M, Uchida Y, Nakamura S, Kurihara H: **SPARC stimulates the synthesis of OPG/OCIF, MMP-2 and DNA in human periodontal ligament cells.** *J Oral Pathol Med* 2002, **31**(6):345-352.
171. Wu YM, Richards DW, Rowe DJ: **Production of matrix-degrading enzymes and inhibition of osteoclast-like cell differentiation by fibroblast-like cells from the periodontal ligament of human primary teeth.** *J Dent Res* 1999, **78**(2):681-689.
172. Von den Hoff JW: **Effects of mechanical tension on matrix degradation by human periodontal ligament cells cultured in collagen gels.** *J Periodontal Res* 2003, **38**(5):449-457.
173. Noguchi K, Ruwanpura SM, Yan M, Yoshida N, Ishikawa I: **Down-regulation of interleukin-1alpha-induced matrix metalloproteinase-13 expression via EP1 receptors by prostaglandin E2 in human periodontal ligament cells.** *Oral Microbiol Immunol* 2005, **20**(1):56-59.
174. Nishikawa M, Yamaguchi Y, Yoshitake K, Saeki Y: **Effects of TNFalpha and prostaglandin E2 on the expression of MMPs in human periodontal ligament fibroblasts.** *J Periodontal Res* 2002, **37**(3):167-176.
175. Hayami T, Zhang Q, Kapila Y, Kapila S: **Dexamethasone's enhancement of osteoblastic markers in human periodontal ligament cells is associated with inhibition of collagenase expression.** *Bone* 2007, **40**(1):93-104.
176. Franceschi RT, Iyer BS: **Relationship between collagen synthesis and expression of the osteoblast phenotype in MC3T3-E1 cells.** *J Bone Miner Res* 1992, **7**(2):235-246.
177. Franceschi RT, Iyer BS, Cui Y: **Effects of ascorbic acid on collagen matrix formation and osteoblast differentiation in murine MC3T3-E1 cells.** *J Bone Miner Res* 1994, **9**(6):843-854.
178. Chien HH, Lin WL, Cho MI: **Interleukin-1beta-induced release of matrix proteins into culture media causes inhibition of mineralization of nodules formed by periodontal ligament cells in vitro.** *Calcif Tissue Int* 1999, **64**(5):402-413.
179. Jikko A, Harris SE, Chen D, Mendrick DL, Damsky CH: **Collagen integrin receptors regulate early osteoblast differentiation induced by BMP-2.** *J Bone Miner Res* 1999, **14**(7):1075-1083.
180. Mizuno M, Fujisawa R, Kuboki Y: **Type I collagen-induced osteoblastic differentiation of bone-marrow cells mediated by collagen-alpha2beta1 integrin interaction.** *J Cell Physiol* 2000, **184**(2):207-213.
181. Schneider GB, Zaharias R, Stanford C: **Osteoblast integrin adhesion and signaling regulate mineralization.** *J Dent Res* 2001, **80**(6):1540-1544.

182. Mizuno M, Imai T, Fujisawa R, Tani H, Kuboki Y: **Bone sialoprotein (BSP) is a crucial factor for the expression of osteoblastic phenotypes of bone marrow cells cultured on type I collagen matrix.** *Calcif Tissue Int* 2000, **66**(5):388-396.
183. Karsdal MA, Larsen L, Engsig MT, Lou H, Ferreras M, Lochter A, Delaisse JM, Foged NT: **Matrix metalloproteinase-dependent activation of latent transforming growth factor-beta controls the conversion of osteoblasts into osteocytes by blocking osteoblast apoptosis.** *J Biol Chem* 2002, **277**(46):44061-44067.
184. Hernandez M, Valenzuela MA, Lopez-Otin C, Alvarez J, Lopez JM, Vernal R, Gamonal J: **Matrix metalloproteinase-13 is highly expressed in destructive periodontal disease activity.** *J Periodontol* 2006, **77**(11):1863-1870.
185. Hayami T, Kapila YL, Kapila S: **MMP-1 (collagenase-1) and MMP-13 (collagenase-3) differentially regulate markers of osteoblastic differentiation in osteogenic cells.** *Matrix Biol* 2008, **27**(8):682-692.
186. Reynolds JJ, Hembry RM, Meikle MC: **Connective tissue degradation in health and periodontal disease and the roles of matrix metalloproteinases and their natural inhibitors.** *Adv Dent Res* 1994, **8**(2):312-319.
187. Nanci A, Bosshardt DD: **Structure of periodontal tissues in health and disease.** *Periodontol 2000* 2006, **40**:11-28.
188. Kinane DF, Peterson M, Stathopoulou PG: **Environmental and other modifying factors of the periodontal diseases.** *Periodontol 2000* 2006, **40**:107-119.
189. Feng Z, Weinberg A: **Role of bacteria in health and disease of periodontal tissues.** *Periodontol 2000* 2006, **40**:50-76.
190. Nakagawa I, Amano A, Inaba H, Kawai S, Hamada S: **Inhibitory effects of Porphyromonas gingivalis fimbriae on interactions between extracellular matrix proteins and cellular integrins.** *Microbes Infect* 2005, **7**(2):157-163.
191. Mintz KP: **Identification of an extracellular matrix protein adhesin, EmaA, which mediates the adhesion of Actinobacillus actinomycetemcomitans to collagen.** *Microbiology* 2004, **150**(Pt 8):2677-2688.
192. Ingman T, Tervahartiala T, Ding Y, Tschesche H, Haerian A, Kinane DF, Konttinen YT, Sorsa T: **Matrix metalloproteinases and their inhibitors in gingival crevicular fluid and saliva of periodontitis patients.** *J Clin Periodontol* 1996, **23**(12):1127-1132.
193. Sorsa T, Ingman T, Suomalainen K, Haapasalo M, Konttinen YT, Lindy O, Saari H, Uitto VJ: **Identification of proteases from periodontopathogenic bacteria as activators of latent human neutrophil and fibroblast-type interstitial collagenases.** *Infect Immun* 1992, **60**(11):4491-4495.
194. DeCarlo AA, Jr., Windsor LJ, Bodden MK, Harber GJ, Birkedal-Hansen B, Birkedal-Hansen H: **Activation and novel processing of matrix metalloproteinases by a thiol-proteinase from the oral anaerobe Porphyromonas gingivalis.** *J Dent Res* 1997, **76**(6):1260-1270.
195. Pozo P, Valenzuela MA, Melej C, Zaldivar M, Puente J, Martinez B, Gamonal J: **Longitudinal analysis of metalloproteinases, tissue inhibitors of metalloproteinases and clinical parameters in gingival crevicular fluid from periodontitis-affected patients.** *J Periodontol Res* 2005, **40**(3):199-207.
196. Schenkein HA: **Host responses in maintaining periodontal health and determining periodontal disease.** *Periodontol 2000* 2006, **40**:77-93.
197. Pitaru S, Michaeli Y, Zajicek G, Weinreb MM: **Role of attrition and occlusal contact in the physiology of the rat incisor: X. The part played by the periodontal ligament in the eruptive process.** *J Dent Res* 1976, **55**(5):819-824.

198. Jat PS, Noble MD, Ataliotis P, Tanaka Y, Yannoutsos N, Larsen L, Kioussis D: **Direct derivation of conditionally immortal cell lines from an H-2Kb-tsA58 transgenic mouse.** *Proc Natl Acad Sci U S A* 1991, **88**(12):5096-5100.
199. Saito Y, Yoshizawa T, Takizawa F, Ikegame M, Ishibashi O, Okuda K, Hara K, Ishibashi K, Obinata M, Kawashima H: **A cell line with characteristics of the periodontal ligament fibroblasts is negatively regulated for mineralization and Runx2/Cbfa1/Osf2 activity, part of which can be overcome by bone morphogenetic protein-2.** *J Cell Sci* 2002, **115**(Pt 21):4191-4200.
200. Sato K, Ebihara T, Adachi E, Kawashima S, Hattori S, Irie S: **Possible involvement of aminotelopeptide in self-assembly and thermal stability of collagen I as revealed by its removal with proteases.** *J Biol Chem* 2000, **275**(33):25870-25875.
201. Gardner H, Kreidberg J, Koteliensky V, Jaenisch R: **Deletion of integrin $\alpha 1$ by homologous recombination permits normal murine development but gives rise to a specific deficit in cell adhesion.** *Dev Biol* 1996, **175**:301-313.
202. Cielinski MJ, Jolie M, Wise GE, Marks SC, Jr.: **The contrasting effects of colony-stimulating factor-1 and epidermal growth factor on tooth eruption in the rat.** *Connect Tissue Res* 1995, **32**(1-4):165-169.
203. Harada H, Toyono T, Toyoshima K, Ohuchi H: **FGF10 maintains stem cell population during mouse incisor development.** *Connect, Tissue Res*, 2002, **43**(2-3):201-204.
204. Bartlett JD, Zhou Z, Skobe Z, Dobeck JM, Tryggvason K: **Delayed tooth eruption in membrane type-1 matrix metalloproteinase deficient mice.** *Connect Tissue Res* 2003, **44 Suppl 1**:300-304.
205. Beertsen W, Holmbeck K, Niehof A, Bianco P, Chrysovergis K, Birkedal-Hansen H, Everts V: **On the role of MT1-MMP, a matrix metalloproteinase essential to collagen remodeling, in murine molar eruption and root growth.** *Eur J Oral Sci* 2002, **110**(6):445-451.
206. Beertsen W, Holmbeck K, Niehof A, Bianco P, Chrysovergis K, Birkedal-Hansen H, Everts V: **Inhibition of molar eruption and root elongation in MT1-MMP-deficient mice.** *Connect Tissue Res* 2003, **44 Suppl 1**:298-299.
207. Beertsen W, Hoeben KA: **Movement of fibroblasts in the periodontal ligament of the mouse incisor is related to eruption.** *J Dent Res* 1987, **66**(5):1006-1010.
208. Burn-Murdoch R: **The role of the vasculature in tooth eruption.** *Eur J Orthod* 1990, **12**(1):101-108.
209. Engvall E, Ruoslahti E, Miller EJ: **Affinity of fibronectin to collagens of different genetic types and to fibrinogen.** *J Exp Med* 1978, **147**(6):1584-1595.
210. Ashizawa N, Graf K, Do YS, Nunohiro T, Giachelli CM, Meehan WP, Tuan TL, Hsueh WA: **Osteopontin is produced by rat cardiac fibroblasts and mediates A(II)-induced DNA synthesis and collagen gel contraction.** *J Clin Invest* 1996, **98**(10):2218-2227.
211. Butcher JT, Norris RA, Hoffman S, Mjaatvedt CH, Markwald RR: **Periostin promotes atrioventricular mesenchyme matrix invasion and remodeling mediated by integrin signaling through Rho/PI 3-kinase.** *Dev Biol* 2007, **302**(1):256-266.
212. Hanssen E, Reinboth B, Gibson MA: **Covalent and non-covalent interactions of betaig-h3 with collagen VI. Beta ig-h3 is covalently attached to the amino-terminal region of collagen VI in tissue microfibrils.** *J Biol Chem* 2003, **278**(27):24334-24341.
213. Norris RA, Damon B, Mironov V, Kasyanov V, Ramamurthi A, Moreno-Rodriguez R, Trusk T, Potts JD, Goodwin RL, Davis J *et al*: **Periostin regulates collagen fibrillogenesis and the biomechanical properties of connective tissues.** *J Cell Biochem* 2007, **101**(3):695-711.

214. Rios H, Koushik SV, Wang H, Wang J, Zhou HM, Lindsley A, Rogers R, Chen Z, Maeda M, Kruzynska-Frejtag A *et al*: **periostin null mice exhibit dwarfism, incisor enamel defects, and an early-onset periodontal disease-like phenotype.** *Mol Cell Biol* 2005, **25**(24):11131-11144.
215. Kubota M, Chiba M, Obinata M, Ueda S, Mitani H: **Establishment of Periodontal Ligament Cell Lines from Temperature-Sensitive Simian Virus 40 Large T-antigen Transgenic Rats.** *Cytotechnology* 2004, **44**(1-2):55-65.
216. Yokoi T, Saito M, Kiyono T, Iseki S, Kosaka K, Nishida E, Tsubakimoto T, Harada H, Eto K, Noguchi T *et al*: **Establishment of immortalized dental follicle cells for generating periodontal ligament in vivo.** *Cell Tissue Res* 2007, **327**(2):301-311.
217. Bosshardt DD, Schroeder HE: **Cementogenesis reviewed: a comparison between human premolars and rodent molars.** *Anat Rec* 1996, **245**(2):267-292.
218. Yamashita Y, Sato M, Noguchi T: **Alkaline phosphatase in the periodontal ligament of the rabbit and macaque monkey.** *Arch Oral Biol* 1987, **32**(9):677-678.
219. Arceo N, Sauk JJ, Moehring J, Foster RA, Somerman MJ: **Human periodontal cells initiate mineral-like nodules in vitro.** *J Periodontol* 1991, **62**(8):499-503.
220. Cho MI, Matsuda N, Lin WL, Moshier A, Ramakrishnan PR: **In vitro formation of mineralized nodules by periodontal ligament cells from the rat.** *Calcif Tissue Int* 1992, **50**(5):459-467.
221. Lamar JM, Pumiglia KM, DiPersio CM: **An immortalization-dependent switch in integrin function up-regulates MMP-9 to enhance tumor cell invasion.** *Cancer Res* 2008, **68**(18):7371-7379.
222. Bell E, Ivarsson B, Merrill C: **Production of a tissue-like structure by contraction of collagen lattices by human fibroblasts of different proliferative potential in vitro.** *Proc Natl Acad Sci U S A* 1979, **76**(3):1274-1278.
223. Phillips JA, Bonassar LJ: **Matrix metalloproteinase activity synergizes with alpha2beta1 integrins to enhance collagen remodeling.** *Exp Cell Res* 2005, **310**(1):79-87.
224. Fluck M, Giraud MN, Tunc V, Chiquet M: **Tensile stress-dependent collagen XII and fibronectin production by fibroblasts requires separate pathways.** *Biochim Biophys Acta* 2003, **1593**(2-3):239-248.
225. Kessler D, Dethlefsen S, Haase I, Plomann M, Hirche F, Krieg T, Eckes B: **Fibroblasts in mechanically stressed collagen lattices assume a "synthetic" phenotype.** *J Biol Chem* 2001, **276**(39):36575-36585.
226. Lindahl GE, Chambers RC, Papakrivopoulou J, Dawson SJ, Jacobsen MC, Bishop JE, Laurent GJ: **Activation of fibroblast procollagen alpha 1(I) transcription by mechanical strain is transforming growth factor-beta-dependent and involves increased binding of CCAAT-binding factor (CBF/NF-Y) at the proximal promoter.** *J Biol Chem* 2002, **277**(8):6153-6161.
227. Rios HF, Ma D, Xie Y, Giannobile WV, Bonewald LF, Conway SJ, Feng JQ: **Periostin is essential for the integrity and function of the periodontal ligament during occlusal loading in mice.** *J Periodontol* 2008, **79**(8):1480-1490.
228. Hori Y, Katoh T, Hirakata M, Joki N, Kaname S, Fukagawa M, Okuda T, Ohashi H, Fujita T, Miyazono K *et al*: **Anti-latent TGF-beta binding protein-1 antibody or synthetic oligopeptides inhibit extracellular matrix expression induced by stretch in cultured rat mesangial cells.** *Kidney Int* 1998, **53**(6):1616-1625.
229. Inada M, Wang Y, Byrne MH, Rahman MU, Miyaura C, Lopez-Otin C, Krane SM: **Critical roles for collagenase-3 (Mmp13) in development of growth plate cartilage and in endochondral ossification.** *Proc Natl Acad Sci U S A* 2004, **101**(49):17192-17197.

-
230. Tardif G, Reboul P, Pelletier JP, Martel-Pelletier J: **Ten years in the life of an enzyme: the story of the human MMP-13 (collagenase-3).** *Mod Rheumatol* 2004, **14**(3):197-204.
231. Egeblad M, Littlepage LE, Werb Z: **The fibroblastic coconspirator in cancer progression.** *Cold Spring Harb Symp Quant Biol* 2005, **70**:383-388.
232. Zhu CQ, Popova SN, Brown ER, Barsyte-Lovejoy D, Navab R, Shih W, Li M, Lu M, Jurisica I, Penn LZ *et al*: **Integrin alpha 11 regulates IGF2 expression in fibroblasts to enhance tumorigenicity of human non-small-cell lung cancer cells.** *Proc Natl Acad Sci U S A* 2007, **104**(28):11754-11759.
233. Takemura A, Nakagawa I, Kawai S, Inaba H, Kato T, Hamada S, Amano A: **Inhibitory effects of tumor necrosis factor-alpha on migration of human periodontal ligament cells.** *J Periodontol* 2006, **77**(5):883-890.
234. van der Pauw MT, Everts V, Beertsen W: **Expression of integrins by human periodontal ligament and gingival fibroblasts and their involvement in fibroblast adhesion to enamel matrix-derived proteins.** *J Periodontol Res* 2002, **37**(5):317-323.
235. Bellows CG, Melcher AH, Aubin JE: **An in-vitro model for tooth eruption utilizing periodontal ligament fibroblasts and collagen lattices.** *Arch Oral Biol* 1983, **28**(8):715-722.
236. Belal MH, Watanabe H, Ichinose S, Ishikawa I: **A time-dependent effect of PDGF-BB on adhesion and growth of cultured fibroblasts to root surfaces.** *Oral Dis* 2006, **12**(6):543-552.
237. Gotz W, Heinen M, Lossdorfer S, Jager A: **Immunohistochemical localization of components of the insulin-like growth factor system in human permanent teeth.** *Arch Oral Biol* 2006, **51**(5):387-395.
238. Ojima Y, Mizuno M, Kuboki Y, Komori T: **In vitro effect of platelet-derived growth factor-BB on collagen synthesis and proliferation of human periodontal ligament cells.** *Oral Dis* 2003, **9**(3):144-151.
239. Pope FM, Komorowska A, Lee KW, Speight P, Zorawska H, Ranta H, Coonar HS, MacKenzie JL: **Ehlers Danlos syndrome type I with novel dental features.** *J Oral Pathol Med* 1992, **21**(9):418-421.
240. Straub AM, Grahame R, Scully C, Tonetti MS: **Severe periodontitis in Marfan's syndrome: a case report.** *J Periodontol* 2002, **73**(7):823-826.
241. Eslami A, Gallant-Behm CL, Hart DA, Wiebe C, Honardoust D, Gardner H, Hakkinen L, Larjava HS: **Expression of Integrin {alpha}{beta}6 and TGF- β in Scarless vs Scar-forming Wound Healing.** *J Histochem Cytochem* 2009.
242. Takashiba S, Naruishi K: **Gene polymorphisms in periodontal health and disease.** *Periodontol 2000* 2006, **40**:94-106.
243. Holla LI, Jurajda M, Fassmann A, Dvorakova N, Znojil V, Vacha J: **Genetic variations in the matrix metalloproteinase-1 promoter and risk of susceptibility and/or severity of chronic periodontitis in the Czech population.** *J Clin Periodontol* 2004, **31**(8):685-690.
244. Itagaki M, Kubota T, Tai H, Shimada Y, Morozumi T, Yamazaki K: **Matrix metalloproteinase-1 and -3 gene promoter polymorphisms in Japanese patients with periodontitis.** *J Clin Periodontol* 2004, **31**(9):764-769.

