

Appendix A

Figures

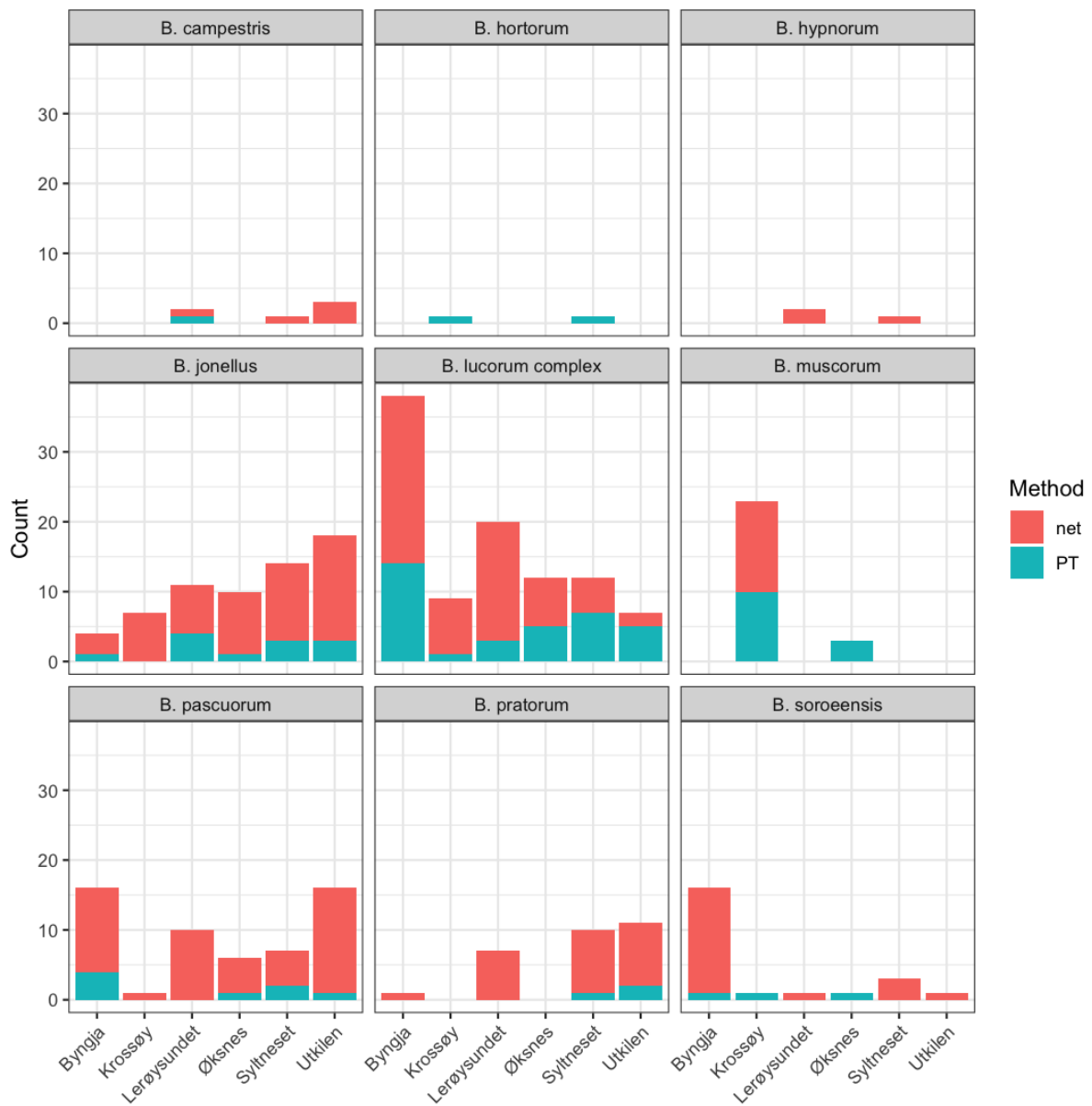


Figure 1: Bar plot showing the abundance of *Bombus* and capture method.

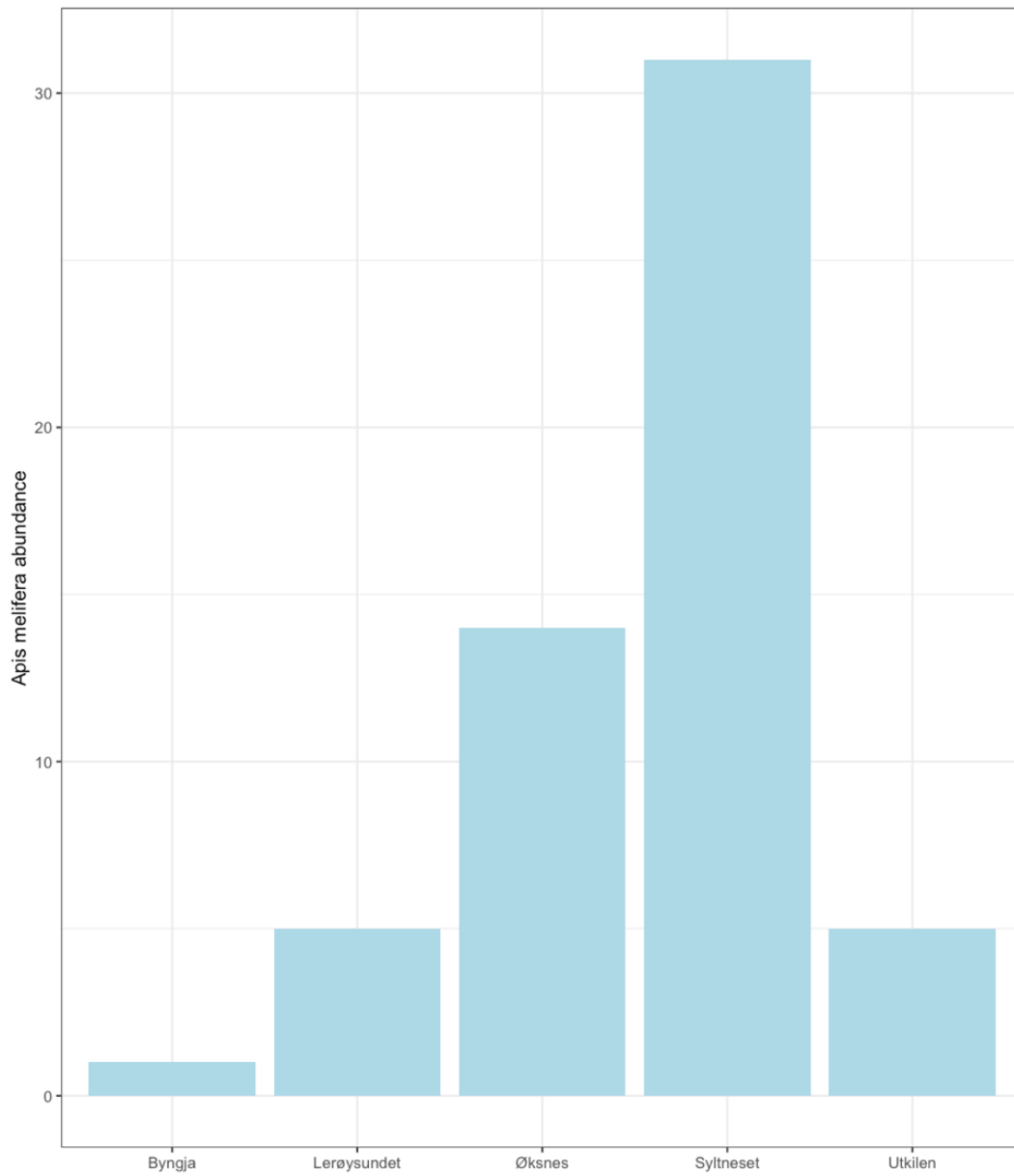


Figure 2: Bar plot showing the abundance of honeybees (*Apis mellifera*) for the different sites.

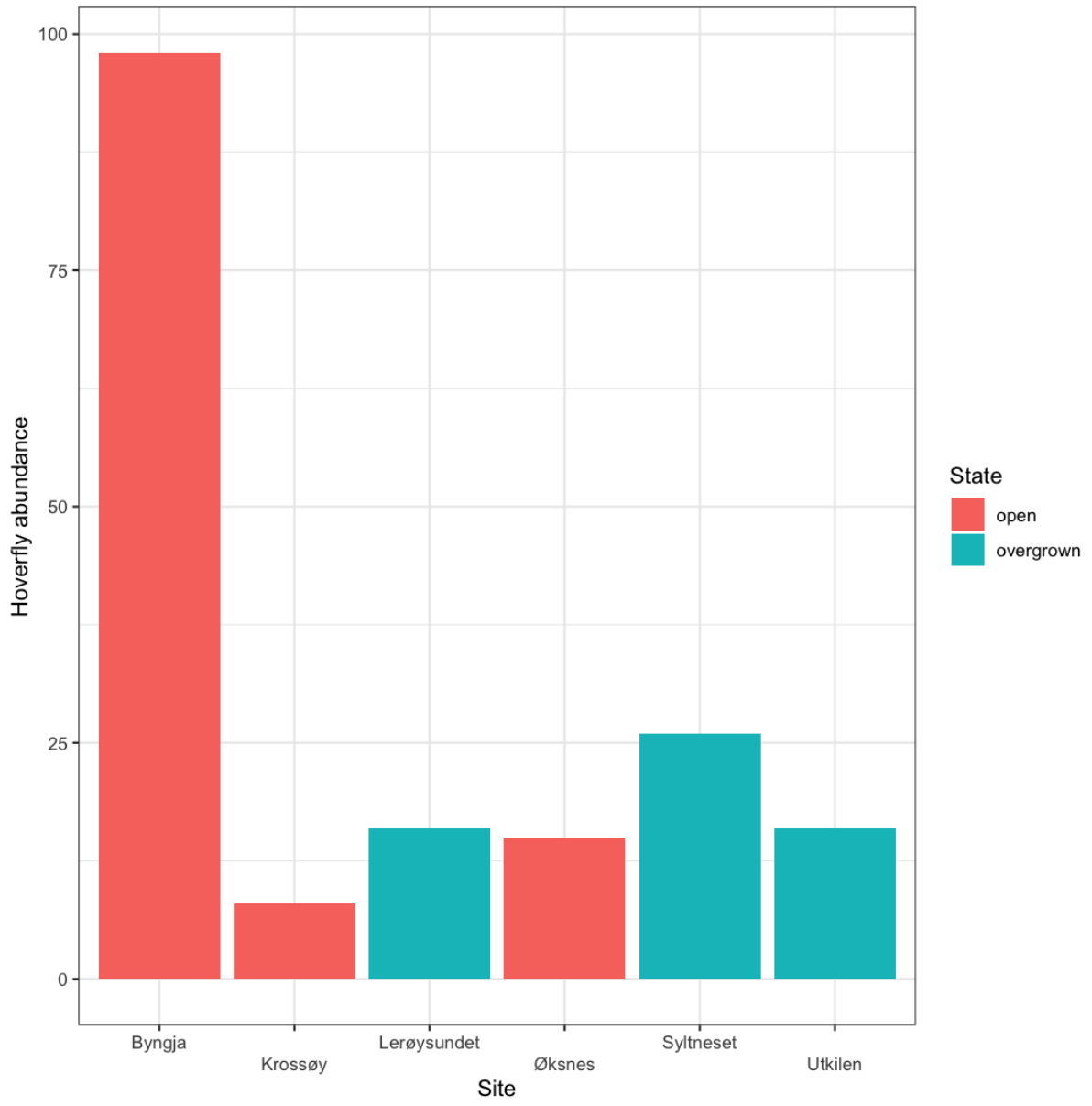


Figure 3: Bar plot showing the abundance of hoverflies (Syrphidae) for the different sites.

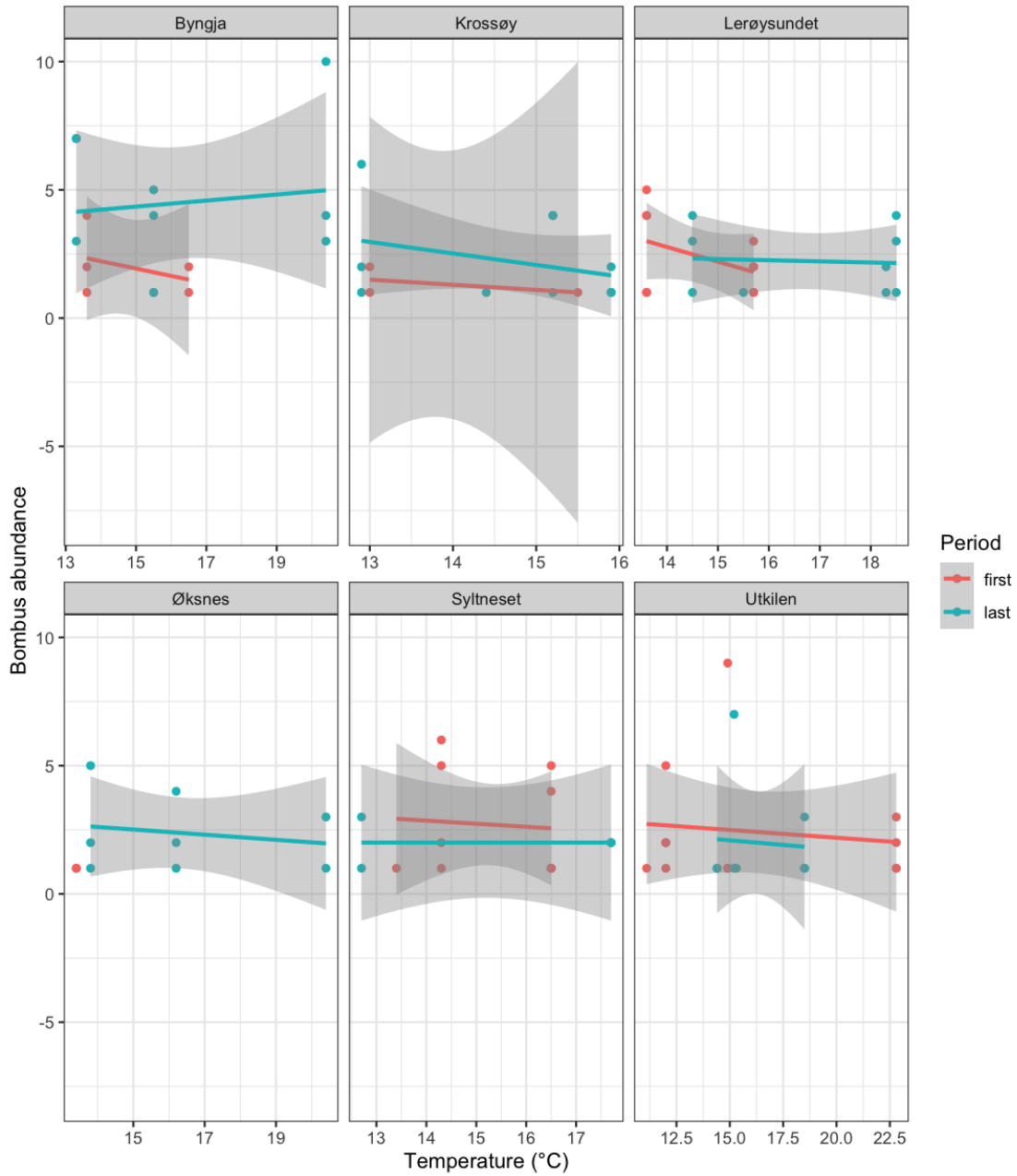


Figure 4: Scatterplot Showing the relationship between Bombus abundance and temperature. Grey line shows a 95% confidence interval.

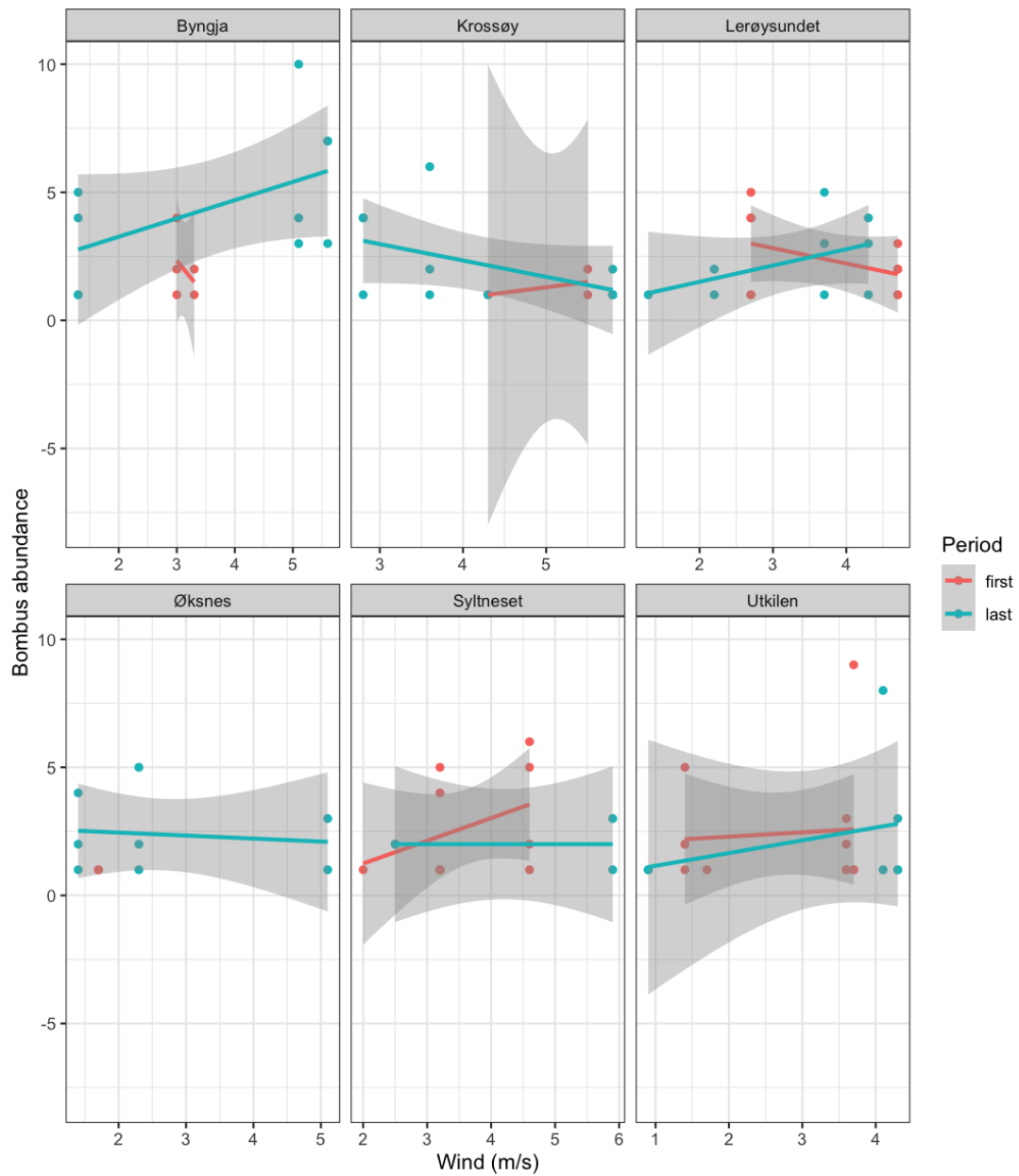


Figure 5: Showing the relationship between Bombus abundance and wind. Grey line shows a 95% confidence interval.

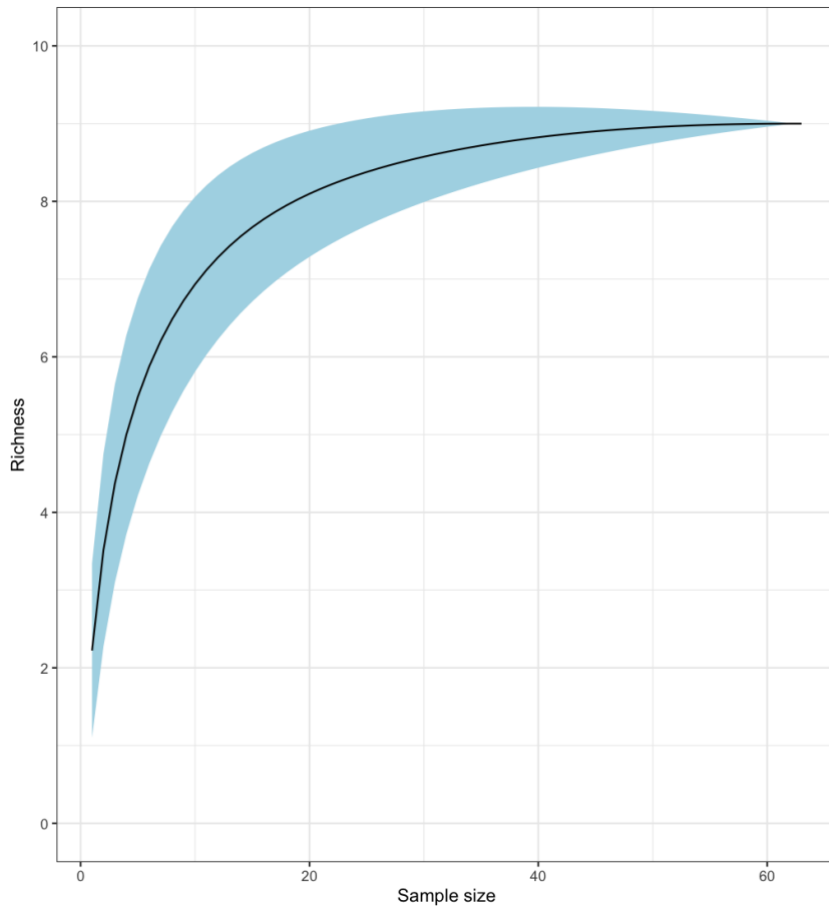


Figure 6: Species accumulation curve for all sites combined.

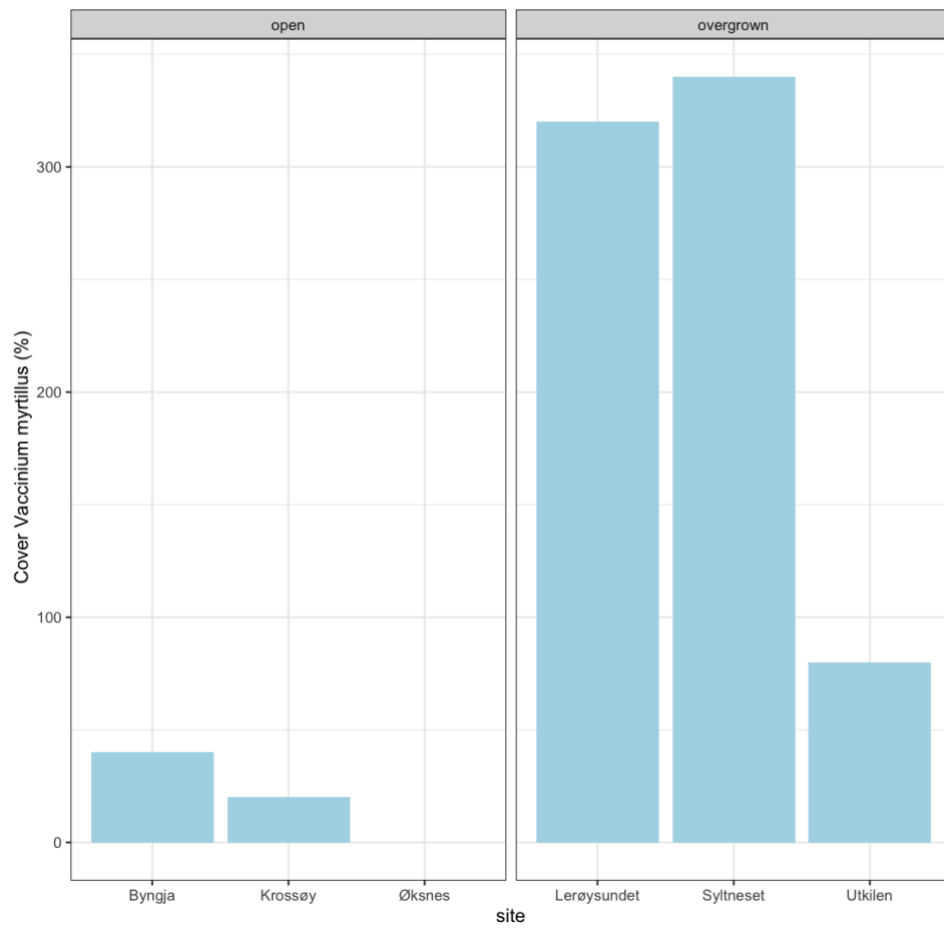


Figure 7: Mean cover of *Vaccinium myrtillus* for all sites.

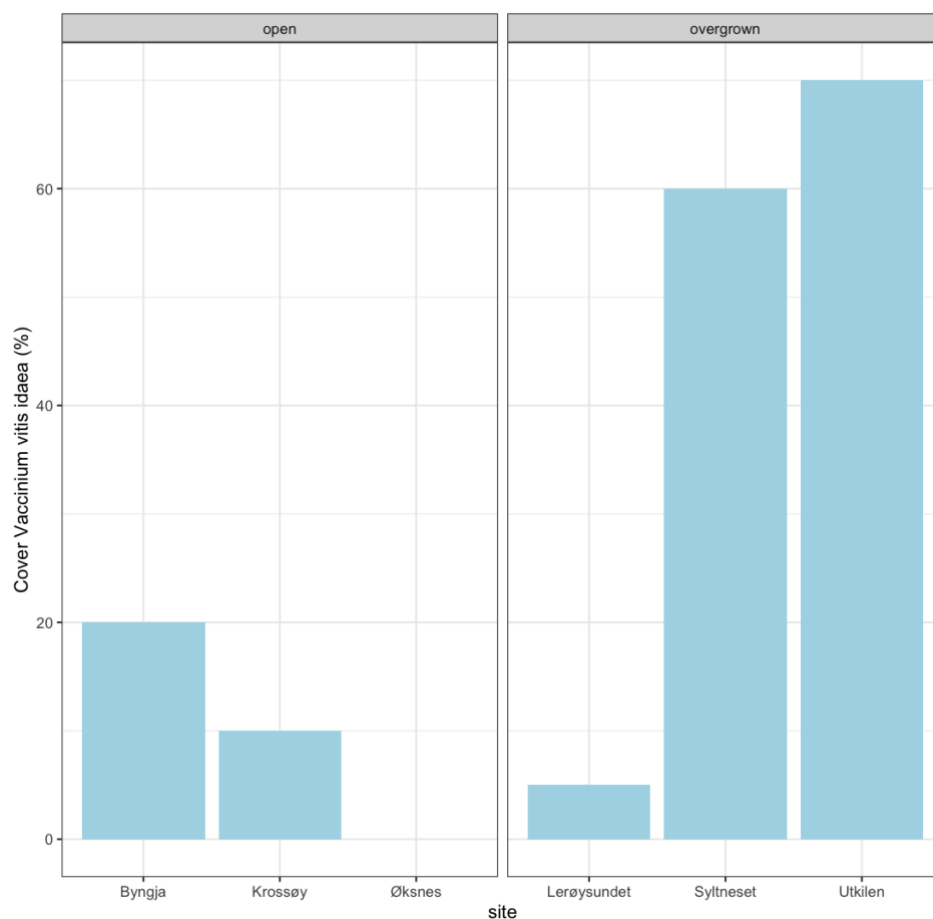


Figure 8: Mean cover of *Vaccinium vitis idaea* for all sites.

Tables

Table 1: Importance of components in Principal Component Analysis (PCA)

	PC1	PC2	PC3	PC4	PC5
Eigenvalue	3.5811	1.5591	0.33926	0.2234	0.06962
Proportion Explained	0.6204	0.2701	0.05877	0.0387	0.01206
Cumulative Proportion	0.6204	0.8905	0.94924	0.9879	1.00000

Table 2: Importance of components in Redundancy Analysis (RDA)

	RDA1	RDA2	RDA3
Eigenvalue	1.6381	0.7216	0.06765
Proportion Explained	0.6749	0.2973	0.02787
Cumulative Proportion	0.6749	0.9721	1.00000

Table 3: Significance of the redundancy analysis model (RDA)

	Df	Varince	F	Pr(>F)
Model	3	2.4273	2.31	0.022
Residual	8	2.8021		

Table 4: Significance of variables in redundancy analysis model (RDA)

	Df	Variance	F	Pr(>F)
state	1	0.78559	2.2429	0.082
period	1	1.34027	3.8265	0.007
Calluna vulgaris (%)	1	0.30144	0.8606	0.517
Residual	8	2.80210		

Table 5: Total Bombus abundance

a)

Site	State	Periode	<i>B. jonellus</i>	<i>B. lucorum complex</i>	<i>B. pascuorum</i>	<i>B. pratorum</i>	<i>B. soroeensis</i>
Byngja	open	first	2	7	2	1	0
Byngja	open	last	2	31	14	0	16
Krossøy	open	first	1	4	0	0	0
Krossøy	open	last	6	5	1	0	1
Lerøysundet	overgrown	first	11	7	2	7	0
Lerøysundet	overgrown	last	0	13	8	0	1
Syltneset	overgrown	first	14	5	2	10	1
Syltneset	overgrown	last	0	7	5	0	2
Utkilen	overgrown	first	17	4	3	11	0
Utkilen	overgrown	last	1	3	13	0	1
Øksnes	open	first	0	2	1	0	0
Øksnes	open	last	10	10	5	0	1

b)

Site	State	Period	<i>B. muscorum</i>	<i>B. hortorum</i>	<i>B. campestris</i>	<i>B. hypnorum</i>
Byngja	open	first	0	0	0	0
Byngja	open	last	0	0	0	0
Krossøy	open	first	1	0	0	0
Krossøy	open	last	22	1	0	0
Lerøysundet	overgrown	first	0	0	1	2
Lerøysundet	overgrown	last	0	0	1	0
Syltneset	overgrown	first	0	0	1	1
Syltneset	overgrown	last	0	1	0	0
Utkilen	overgrown	first	0	0	2	0
Utkilen	overgrown	last	0	0	1	0
Øksnes	open	first	1	0	0	0
Øksnes	open	last	2	0	0	0