

Cold spells in the Nordic Seas during the early Eocene Greenhouse

Madeleine L. Vickers¹✉, Sabine K. Lenggler², Stefano M. Bernasconi³, Nicolas Thibault¹, Bo Pagh Schultz⁴, Alvaro Fernandez⁵, Clemens V. Ullmann⁶, Paul McCormack², Christian J. Bjerrum¹, Jan Audun Rasmussen⁷, Iben Winther Hougård¹ & Christoph Korte¹

The early Eocene (c. 56 - 48 million years ago) experienced some of the highest global temperatures in Earth's history since the Mesozoic, with no polar ice. Reports of contradictory ice-rafted erratics and cold water glendonites in the higher latitudes have been largely dismissed due to ambiguity of the significance of these purported cold-climate indicators. Here we apply clumped isotope paleothermometry to a traditionally qualitative abiotic proxy, glendonite calcite, to generate quantitative temperature estimates for northern mid-latitude bottom waters. Our data show that the glendonites of the Danish Basin formed in waters below 5 °C, at water depths of <300 m. Such near-freezing temperatures have not previously been reconstructed from proxy data for anywhere on the early Eocene Earth, and these data therefore suggest that regionalised cool episodes punctuated the background warmth of the early Eocene, likely linked to eruptive phases of the North Atlantic Igneous Province.

¹IGN, University of Copenhagen, Øster Voldgade 10, DK-1350 Copenhagen, Denmark. ²Biogeochemistry Research Centre, School of Geography, Earth and Environmental Sciences, Plymouth University, Drake Circus, Plymouth PL4 8AA, UK. ³ETH Zurich, Geologisches Institut, Sonneggstrasse 5, 8092 Zürich, Switzerland. ⁴Museum Salling, Fur Museum, Nederby 28, 7884 Fur, Denmark. ⁵Bjerknes Centre for Climate Research and Department of Earth Science, University of Bergen, Allégaten 41, N-5007 Bergen, Norway. ⁶Camborne School of Mines, University of Exeter, Penryn Campus, Penryn, Cornwall TR10 9FE, UK. ⁷Museum Mors, Fossil- and Mo-clay Museum, Skarrehagevej 8, 7900 Nykøbing Mors, Denmark. ✉email: mlv@ign.ku.dk

The Eocene, 56.0 – 33.9 Ma, is the final epoch with global greenhouse conditions that dominated the Mesozoic and earliest Cenozoic^{1,2}. Despite a large body of evidence for globally warm background conditions throughout the early Eocene^{2,3}, there are reports of glacial sediments and glendonites from the high latitudes, suggesting that episodic cooler intervals may have interrupted the Eocene warmth^{4–6}.

“Glendonite” is the name given to the calcite pseudomorphs after the mineral ikaite ($\text{CaCO}_3 \cdot 6\text{H}_2\text{O}$), a hydrated form of calcium carbonate that in general is unstable at Earth surface temperature and pressure conditions⁷. A combination of low temperatures ($\leq 4^\circ\text{C}$ in the natural marine sedimentary realm⁸), and chemical inhibitors of the more stable polymorphs, are needed to promote the precipitation and stabilisation of ikaite over calcite and aragonite⁹. In the marine sedimentary realm, ikaite growth is thought to be facilitated by either the anaerobic oxidation of methane (AOM) or bacterial sulphate reduction, both of which generate high alkalinity and high phosphate and/or sulphate concentrations which may act as chemical inhibitors of the anhydrous CaCO_3 polymorphs^{8,10,11}. The carbon source (AOM or organic matter) is reflected in the $\delta^{13}\text{C}$ signatures of the ikaite-derived glendonite calcite^{10,12}.

Glendonites are traditionally considered cold-climate indicators, due to the temperature-dependency of their parent ikaite in natural settings, and the fact that they are found in paleo-high latitude sediments frequently associated with glacial deposits¹³. Their presence in early- and mid-Eocene deposits from North America¹⁴ (paleolatitude c. 55°N ¹⁵); the Arctic⁴ (paleolatitude c. 77°N ¹⁵); and Denmark^{5,16} (paleolatitude c. 45°N ¹⁵) is something of a quandary. The glendonites and potentially ice-rafted erratics found in the Paleocene-Eocene strata of Svalbard have given rise to speculation of multiple transitions between cold and warm phases during this time⁴. However, since the successful laboratory growth and stabilisation of synthetic ikaite at 35°C ⁹, the significance of glendonites in the geological record has been questioned. No truly quantitative temperature reconstructions were possible for the Svalbard glendonites due to the poor preservation of the entire succession on Svalbard⁴.

The Fur Formation diatomite of the early Eocene of Denmark is renowned for its exceptionally well-preserved marine and terrestrial fossils⁵. The flora and fauna of the Fur Formation suggest local tropical to sub-tropical climates⁵. Thus, the presence of numerous, unusually large glendonites at several levels in the succession has long been a conundrum¹⁶, and appears to support the findings that ikaite may grow at much higher temperatures than near-freezing⁹. Quantitative temperature reconstructions for the glendonites are needed to test if the glendonites of early Eocene Denmark are indeed indicative of very low temperatures ($\leq 4^\circ\text{C}$ ⁸).

Geological setting

The approx. 60 m thick interbedded diatomite and ash horizons of the Fur Formation are exposed in northern Denmark, c. $56^\circ 56'\text{N}$; $8^\circ 54'\text{E}$ (Fig. 1a), in glacially folded and thrust outcrops¹⁷. The formation is subdivided into the laminated Knudeklint Member and overlying Silstrup Member, which has a higher proportion of structureless diatomite¹⁷ (Fig. 2). The 179 numbered volcanic ash layers were deposited during the emplacement of the North Atlantic Igneous Province^{18,19} (NAIP; Fig. 1b), and represent isochronous horizons²⁰. The glendonites analysed here (Supplementary Figs. 1 and 2) are found in ash layers +15, +60 – +62¹⁶, which are thought to have been deposited between the Paleocene-Eocene thermal maximum (PETM) and Eocene thermal maximum 2 (ETM2), ~ 55 Ma (Fig. 1c). The age constraints for the Fur Formation come from several dated NAIP ash layers

in the region (Fig. 2). Ash layer -17 was dated in 2007 by Ar/Ar as 55.1 Ma ²¹. Since then, the calibration for the Fish Canyon Tuff has changed and the recalibrated age is closer to $55.6 \pm 1 \text{ Ma}$ Stokke et al.²². An ash layer in Svalbard, equivalent to the -31 layer in the Fur Formation¹⁸ has been dated as $55.765 \pm 0.086 \text{ Ma}$ ²³. Closer to the glendonite-bearing horizons, Westerhold et al.²⁴ place ash horizon +19 at about 55.4 Ma , based on cyclostratigraphy. The position of the glendonite-bearing horizons relative to these dated ash layers are shown on Fig. 2.

During the Eocene, the semi-enclosed Danish Basin was open to the Greenland Sea in the northwest, with possible, shallow openings to the east and southwest^{15,18,25} (Fig. 1b). The main influx of marine water to the Danish Basin was likely only from the north, despite uncertainties about whether it was partially open to the east^{18,26}. Where this inflowing water was ultimately derived from, or if the Nordic seas region was even entirely enclosed, remains unclear^{15,18,27,28} (Fig. 1b). The current model for the Fur Formation depositional environment was developed by Bonde²⁹, based on a number of lines of evidence pointing to upwelling occurring in the basin. Pedersen³⁰ suggested a more locally restricted upwelling model than that of Bonde²⁹.

In this study, we apply clumped isotope thermometry to hand-separated ikaite-derived glendonite calcite, to show that temperatures in the Danish Basin were near-freezing during particular intervals of the early Eocene. These results, in conjunction with other geochemical data from the Fur Formation and by comparison to published marine and terrestrial temperatures during this time, indicate at least regionalised cooling to near-freezing temperatures in the Nordic Seas region during the early Eocene Greenhouse, possibly linked to NAIP volcanism.

Results

Glendonite characterisation. The characterisation of the glendonites is based on Scanning Electron Microscopy (SEM), cathodoluminescence (CL) and light microscopy (Fig. 3), stable isotope (Fig. 4) and minor element analysis (Table 1), clumped isotope thermometry (Table 1), and organic biomarker extraction (Table 2 and Fig. 5), with details of the analyses in the Methods section.

Clumped isotope thermometry. The Δ_{47} values for the Fur Formation carbonates range from $0.71 (\pm 0.03) \text{ ‰}$ to $0.77 (\pm 0.04) \text{ ‰}$ (Table 1). The Δ_{47} values yield average temperatures of 0.9°C (± 4.7 at the 95% confidence level) and 9.1°C (± 3.7) for the Type I (ikaite-derived) calcite of +15 and +60–62 glendonites, respectively. The Type III (late phase sparry) calcite yielded temperatures of $8.5 (\pm 5.1)^\circ\text{C}$ for +15 glendonite and $13.6 (\pm 4.0)^\circ\text{C}$ for the +62 glendonite. The calcite concretions yielded mean temperatures of $4.5 (\pm 3.9)^\circ\text{C}$ and $10.3 (\pm 8.3)^\circ\text{C}$ for +15 and +60–62 horizons, respectively.

Biomarkers. Biomarker distributions for the sediment, concretion and glendonite samples are shown in Fig. 5 and Supplementary Figs. 6 and 7. Sea surface temperatures (SSTs) were reconstructed using GDGTs (TEX₈₆ using the BAYSPAR calibration³¹). In the +15 horizon, temperatures reconstructed from the glendonites and concretions ranged from 13 to 15°C ; for the +60–62 horizon, the range was 8 – 12°C . However, both sediment samples showed a BIT index above 0.4 ³² and $\Delta\text{RI} > 0.3$ ³³ (which identify samples with high amounts of terrigenous GDGTs or anomalous distributions, respectively), and were thus excluded from further interpretation (Table 2 and Supplementary Information dataset). This anomalous distribution or high terrestrial GDGT content may be due to the sediment samples representing a greater time period than the concretions within the horizon: the

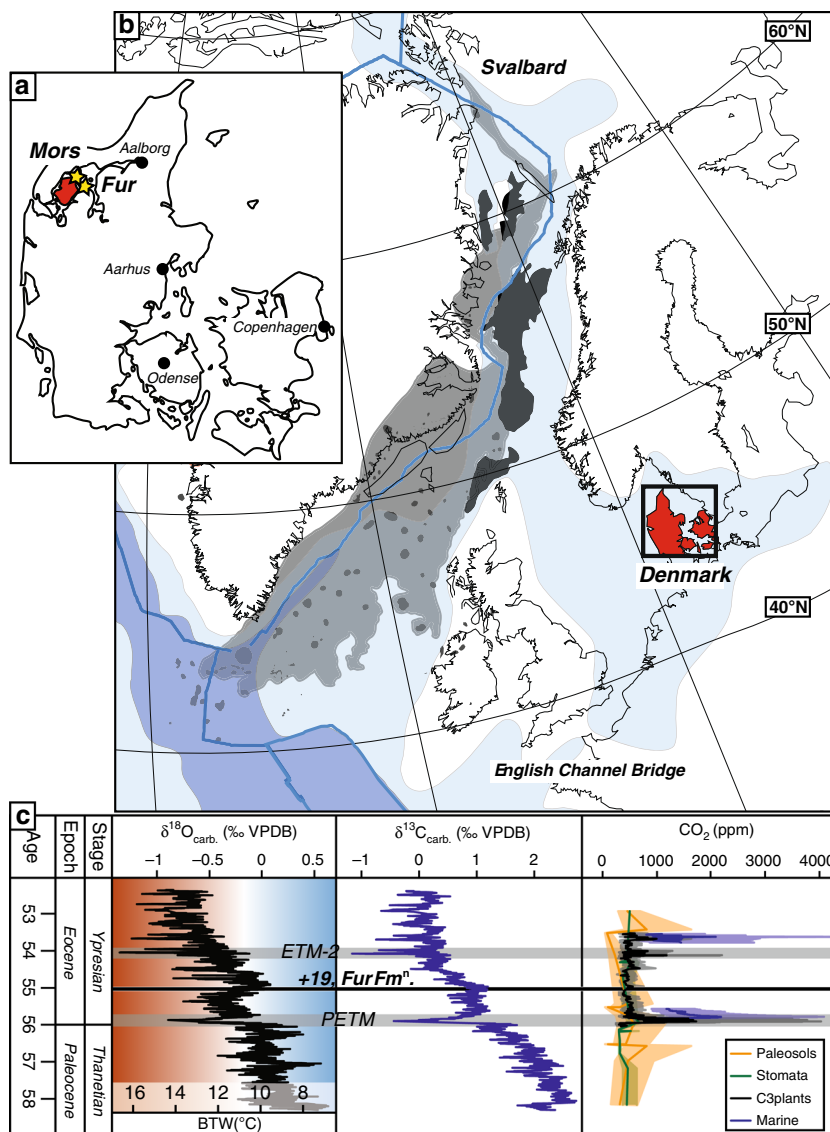


Fig. 1 Summary of relevant geographical and geochemical data. **a** current geographic map of the study area. **b** Paleogeographic reconstruction of the North Sea Basin and surrounding regions, made using the paleomagnetic reference frame¹⁵; NAIP and other details from Jones et al.¹⁸. **c** Position of Fur Formation (+19 horizon), in relation to the Eocene hyperthermals⁵³, stable C- and O- isotope records⁵⁵, and reconstructed $p\text{CO}_2$ ⁵⁴. Geological timescale of Ogg et al.⁸⁵.

soft sediment experienced more compaction than the cemented concretions; and during this additional time significant terrestrial input to the sediment could have occurred. The concretions preserved only the planktonic-derived GDGTs in the sediment at the time of concretion formation^{34,35}. Attempts of SST reconstruction using the Long Chain Diol Index (LDI³⁶ and U^{K}_{37} ³⁷, both gave high values; however, these proxies are unreliable as they are calibrated for open marine settings³⁸. Additionally, while diols have been detected in Eocene samples³⁹, their distribution is markedly different from the modern suggesting a different producer regime, and LDI has not been applied in this time period for this reason. Our biomarker data show high $\text{C}_{37}/\text{C}_{38}$ alkenone ratios (≥ 1.8 , characteristic of coastal/brackish Group II haptophyte production⁴⁰), and relatively high % $\text{C}_{32}1,15$ diol ($> 10\%$, along with fairly low % $\text{C}_{30}1,15$ diol), which is consistent with a strong riverine-influence⁴¹. Along with published floral and faunal data⁵, these data indicate a coastal, freshwater-influenced/brackish depositional environment, and therefore these open-ocean calibrated proxies (LDI and U^{K}_{37}) cannot be reliably used for SST reconstructions in this study^{38,40}.

Discussion

The glendonites contain higher P and Mg concentrations than the concretions in which they are found, suggesting that these elements were inhibiting calcite and allowing ikaite nucleation in sediment^{8,9} (Fig. 3). Along with high Fe concentrations, the $\delta^{13}\text{C}$ signature of the glendonites suggest that either c. 90% of the glendonite carbon was sourced from organic matter carbon, with 10% from dissolved inorganic carbon (DIC), or c. 50% was from methane and 50% from DIC (Fig. 4). These data thus imply that high amounts of bacterial sulphate reduction, rather than methane seep activity, generated the conditions favourable for ikaite growth^{8,10,11}. This conclusion is supported by the biomarker distributions of extracted bulk undecarbonated glendonite, concretions and sediment. The presence, yet low abundances, of archaeol and diether lipids (Fig. 5) may be indicative of some diffusive methane flux⁴¹, but as photosynthetically-derived biomarkers dominate the signal, methane fluxes are thought to have been substantially lower than in a cold seep⁴². Furthermore, the Methane Index is very low (≤ 0.2), suggesting no AOM⁴³. This is consistent with the GDGT data of Stokke et al.²².

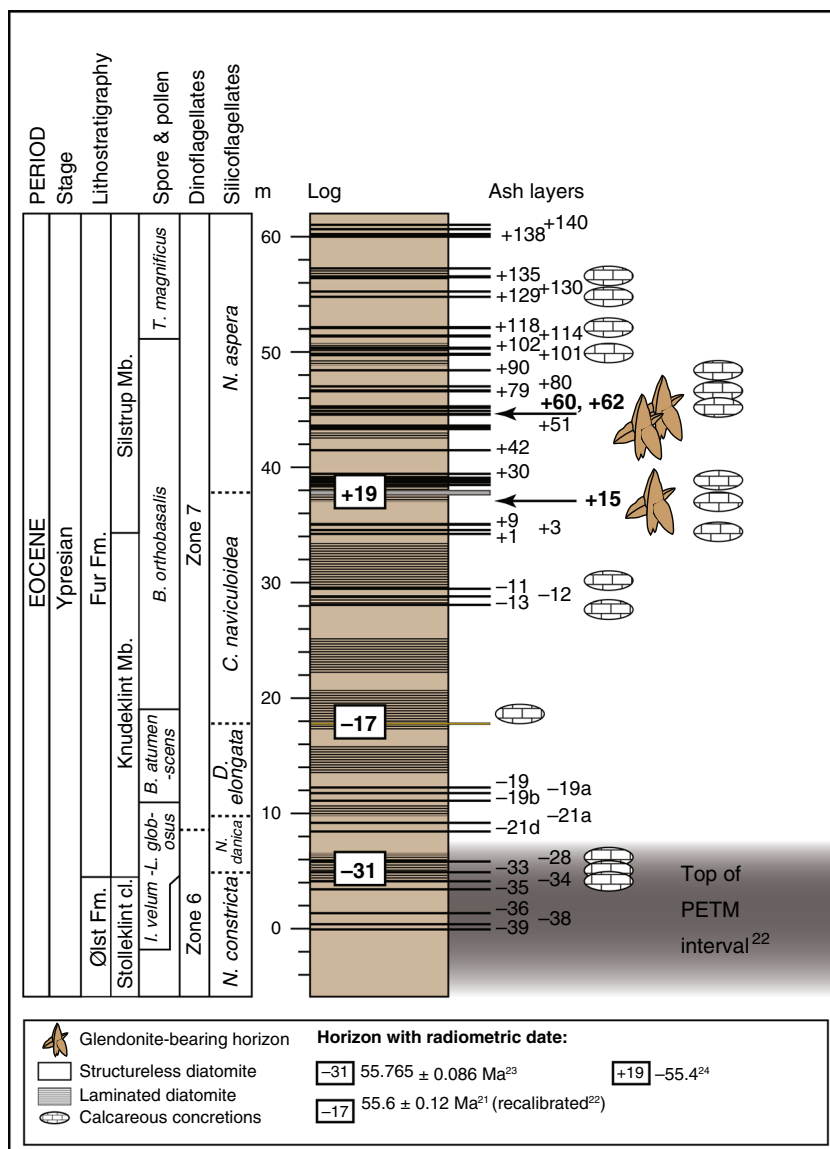


Fig. 2 Idealised graphic log for the Fur Formation. The numbers (e.g. +15, -39) refer to the ash layers. The PETM interval lies 24 m below ash layer -33. Dated ashes from Storey et al.²¹, Westerhold et al.²⁴, and Charles et al.²³. Spore and pollen zones from Willumsen⁷⁷, dinoflagellate cyst zones from Heilmann-Clausen et al.⁸⁶ and silicoflagellate zones from Perch-Nielsen⁸⁷. Fm. Formation.

The $\delta^{18}\text{O}$ combined with the clumped isotope data allows reconstruction of the $\delta^{18}\text{O}$ of the fluid ($\delta^{18}\text{O}_w$) from which the calcite precipitated. All calcites give reconstructed $\delta^{18}\text{O}_w$ lower than -1‰ (the average composition of seawater for an ice-free world⁴⁴ (Table 1). Yet as the parent ikaite grew in the pore waters below the sea floor, it is more likely that this $\delta^{18}\text{O}_w$ reflects early diagenetic conditions. The original bottom water $\delta^{18}\text{O}$ signal could have been shifted to even lower $\delta^{18}\text{O}_w$ by freshwater influence, as indicated by biomarkers and floral data. An additional potential cause for a negative shift of the $\delta^{18}\text{O}$ is early diagenetic alteration of the abundant volcanic detritus⁴⁵.

The new clumped isotope temperatures recording the crystallisation temperature of the calcite from ikaite have a mean value of $5 \pm 4 \text{ °C}$, and are within error of the carbonate concretions ($6 \pm 5 \text{ °C}$). This fits well with what we know about ikaite formation and transformation to glendonite calcite. Given the uncertainty on these temperatures, these data are consistent with observations of modern marine sedimentary ikaite being unstable above 4 °C ⁸.

Burial diagenesis may alter clumped isotope compositions; however, burial heating of the Fur Formation was minimal

($40\text{--}45 \text{ °C}$ ⁴⁶, as further evidenced by the very high opal-A to opal-CT ratio^{47,48}, very well-preserved diatoms and light-coloured and well-preserved dinoflagellate cysts, pollen and spores with very low colour alteration values (TAI 1 or TAI 1+; Dr. Claus Heilmann-Clausen, pers. comm. 2020; see Methods). Furthermore, such recrystallisation and reprecipitation reactions would bias samples to higher, rather than lower, Δ_{47} temperatures⁴⁹. Similarly, higher Δ_{47} temperatures (relative to initial compositions) are expected for samples after partial reordering of their $^{13}\text{C}\text{--}^{18}\text{O}$ bonds⁵⁰. However, it is currently not known what happens to ikaite Δ_{47} compositions during the transformation to calcite. It is possible that this transition results in disequilibrium Δ_{47} compositions that are colder than predicted. Such behaviour has been observed during controlled laboratory heating experiments when aragonite transforms to calcite⁵¹. In this case, we can rule out a clumped isotope effect during the ikaite-calcite transition because the Δ_{47} values of the primary (type I) calcite are indistinguishable from the concretionary calcite (type II), which did not experience such a transition. This lack of any significant statistical difference in Δ_{47} temperature between the concretions and the glendonites

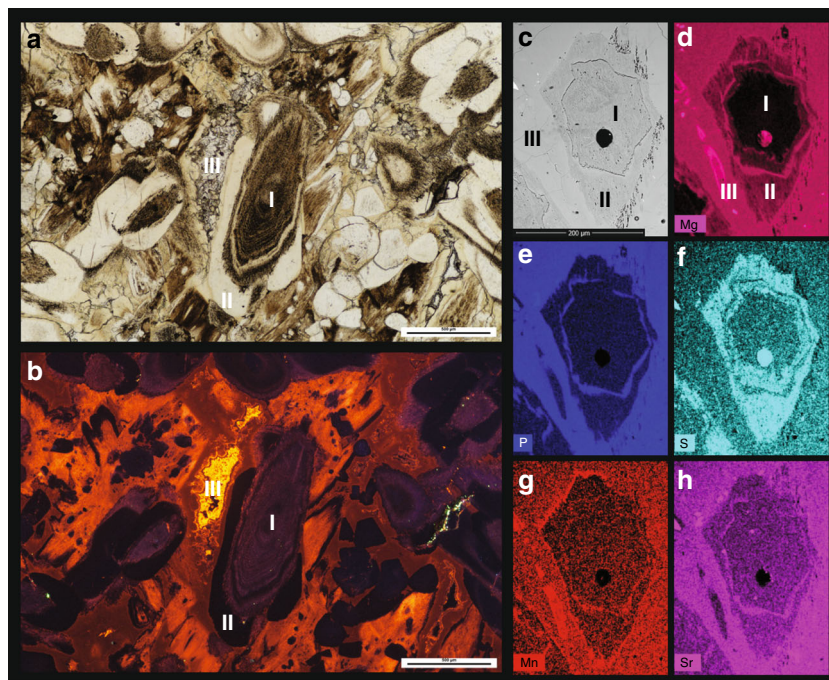


Fig. 3 Glendonite thin-section photomicrographs. **a** Thin section of a glendonite from the +60–62 horizon under plane polarised light. **b** The same view under cathodoluminescence. The three main calcite phases (types I, II and III, as defined in Vickers et al.¹²) are clearly distinct, showing different luminescent properties. **c** Secondary Electron SEM image of thin section of glendonite from the +15 horizon. **d–h** Element maps (by Energy Dispersive X-Ray Spectroscopy, EDS) of the same view, showing Mg, Mn, P, S and Sr variations. I = Type I calcite, the ikaite-derived calcite phase in glendonite; II = secondary calcites, collectively called Type II calcite, believed to have grown rapidly on the Type I calcite after transformation of the ikaite to calcite; III = Type III calcite, a late-phase spar infilling pore spaces in glendonite.

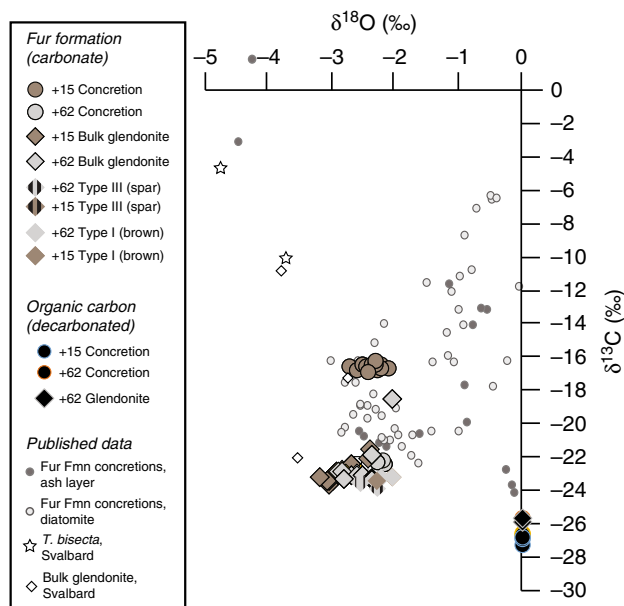


Fig. 4 Glendonite and concretion stable isotope data. Plotted stable isotope data for +15 and +60–62 horizons in the Eocene Fur Formation glendonite and concretions, along with $\delta^{13}\text{C}$ data for organic matter from decarbonated glendonites and concretions. For comparison, published stable isotope data for concretions of the Fur Formation and glendonites from the early Eocene succession on Svalbard (Basilika Fmn) are also shown^{4,5}.

of the Fur Formation argue for a common early diagenetic phase of calcite precipitation when pore-water in the sediment was still close to the same temperature as the bottom-waters (Fig. 6). This is confirmed by our quality check using sub-samples of different calcites from the same sample from the Kola Peninsula, whereby the glendonite and sedimentary carbonate gave the same clumped isotope temperatures (within error) as mussel and bivalve shell aragonite from the same sample (see Methods and Supplementary Figs. 3–5). Consequently, our glendonite Δ_{47} temperatures may be taken as an upper limit for bottom water temperatures. The ikaite may have transformed into calcite at any point after it grew in the ikaite formation zone (Fig. 6). Mean Δ_{47} temperatures from the concretionary calcite are considerably colder than those for the Type III calcite ($5\text{ }^\circ\text{C} \pm 4\text{ }^\circ\text{C}$ vs $12 \pm 5\text{ }^\circ\text{C}$), indicating that this spar grew after the concretion formed around the newly-transformed glendonite, at deeper burial depths (Fig. 6).

The reconstructed TEX_{86} SSTs from concretions and glendonites represent both a slightly older and longer duration time slice than the clumped isotope bottom water temperatures recorded in the glendonites. The sediments from which the biomarkers are derived were deposited, and the ikaite grew rapidly when they passed into the Ikaite Formation Zone, several metres below the sediment-water interface⁸, displacing and cutting across sedimentary laminae. Later, before significant compaction, the ikaite transformed into glendonite (type 1 calcite, Fig. 6). The concretion grew around the glendonite, yet across many laminae (Fig. 6) and so the extracted GDGTs from the concretions represent longer duration time slices than the biomarkers in the glendonite^{34,35}, and both represent a longer time slice than the clumped isotope temperatures recorded in the Type 1 calcite (Fig. 6).

Recently published TEX_{86} SSTs from the upper Ølst and throughout the Fur Formation²² (from below ash horizon –39

Table 1 Summary of inorganic geochemical data.

Analyses performed at:		ETH, Zurich				University of Copenhagen				CSM, Exeter University											
Calcite type	Ash horizon	Replicates	Δ_{47}	SD	Temp. °C	Temp. 95% CL	$\delta^{13}C_c$ VPDB	$\delta^{18}O_c$ VPDB	$\delta^{18}O$ fluid VSMOW	$\delta^{13}C_{org}$ VPDB	$\delta^{13}C_c$ VPDB	$\delta^{18}O_c$ VPDB	Ca wt%	Mg/Ca	Sr/Ca	Mn/Ca	Fe/Ca	S/Ca	P/Ca		
Glendonite calc. Type I	+15	14	0.766	0.036	0.9	4.7	-23.38	-2.27	-5.17												
Glendonite calc. Type III	+15	11	0.734	0.031	8.6	5.1	-23.12	-2.70	-3.44												
Bulk glendonite	+15	Not measured as gives mixed signal of the different calcite types																			
Bulk concretion	+15	15	0.744	0.020	5.8	2.7	-18.53	-2.02	-3.77	-22.90	-2.79		36.2	28.3	1.14	3.6	1.4	1.6	5.5		
Embry concretion	+15	10	0.756	0.031	3.2	5.1	-18.27	-2.02	-4.39	-17.15	-2.35		31.9	37.4	1.35	10.6	17.1	6.1	12.5		
Glendonite calc. Type I	+60-62	16	0.732	0.027	9.1	3.7	-23.23	-2.19	-3.21												
Glendonite calc. Type III	+60-62	14	0.714	0.026	13.6	4.0	-23.51	-2.52	-2.52												
Bulk glendonite	+60-62	Not measured as gives mixed signal of the different calcite types																			
Bulk concretion	+60-62	14	0.729	0.049	10.3	8.3	-21.97	-1.96	-2.69	-25.76	-2.43		35.9	30.0	1.32	3.8	3.6	5.8	10.6		
Bulk concretion	+60-62	Not measured																			

Averaged results for clumped and stable isotope and Element/Ca ratio analyses of glendonites, concretions and sediment. SD standard deviation, Temp. Temperature, CI Confidence Interval, VPDB Vienna PeeDee Belemnite, VSMOW Vienna Standard Mean Ocean Water.

Table 2 Mean averaged biomarker data.

Sample type	Ash horizon	Long chain diols		Alkenones		GDGT SST		Quality control		MI	RI	R _{TEX}	Δ RI
		LDI	Diol index 2	C ₃₇ /C ₃₈	%C ₃₀	%C ₃₂	%C ₃₀	TEX ₈₆	TEX ₈₆ ^H				
bulk													
Concretion A	+15	0.84	0.61	3.98	55.88	24.63	0.476	14.09	0.08	0.16	1.87	1.97	0.10
Concretion B	+15	0.84	0.61	4.05	55.60	24.89	0.476	14.09	0.07	0.13	1.97	1.99	0.07
Sediment	+15	0.84	0.62	3.04	55.66	24.89			0.70	0.18	2.51	2.03	0.48
Glendonite	+15	0.85	0.70	3.72	54.67	23.82	0.468	13.50	0.10	0.13	1.82	1.96	0.13
Concretion A	+60-62	0.78	0.35	3.08	56.56	34.78	0.437	11.37	0.20	0.14	1.99	1.89	0.10
Concretion B	+60-62	0.74	0.53	3.10	46.28	32.30	0.416	9.60	0.22	0.13	2.00	1.84	0.16
Sediment	+60-62	0.67	0.39	2.10	55.52	26.68			0.58	0.22	2.30	2.30	0.01
decarb. bulk													
Concretion A	+15	0.84	0.61	3.93	55.88	24.63	0.491	15.00	0.08	0.15	1.91	2.01	0.10
Concretion B	+15	0.84	0.61	3.95	55.60	24.89	0.481	14.40	0.07	0.13	1.91	1.99	0.07
Sediment	+15	0.84	0.62	3.11	55.66	24.89			0.61	0.09	2.12	2.55	0.43
Glendonite	+15	0.85	0.70	3.69	54.67	23.82	0.476	14.09	0.08	0.18	1.87	1.98	0.10
Concretion A	+60-62	0.78	0.35	2.98	56.56	34.78	0.455	12.63	0.05	0.13	2.02	1.93	0.09
Concretion B	+60-62	0.74	0.53	3.07	46.28	32.30	0.407	8.00	0.19	0.13	1.97	1.83	0.14
Sediment	+60-62	0.67	0.39	2.17	55.52	26.68			0.58	0.20	2.38	2.28	0.10

Full results in the Supplementary dataset. LDI Long-chain Diol Index, SST Sea Surface Temperature (calculated from LDI³⁶, TEX₈₆³¹), Diol Index 2 a proxy for upwelling intensity at high latitudes⁷⁴, F_{C32}Fractional abundance of C₃₂ 1,15-diol, a proxy for riverine input³⁸, BIT branched and isoprenoid tetraether index, and proxy for terrigenous input³², Δ RI the sample's offset from the modern TEX₈₆-Ring Index (RI) core top relationship³³, MI Methane Index⁴³.

and up to +101; Fig. 2) indicate that this cooling trend began at the top of the PETM interval (ash horizon -21a) and persisted throughout the entire interval, with temperatures reaching as low as 14.6 °C and averaging 17.3 °C. The SSTs for the +15 horizon from this study are even lower (14.2 °C in the +15 horizon and 10.4 °C in the +60–62 horizon); suggesting that the low resolution of the Stokke et al.²² study missed the coolest intervals. An earlier study⁵² reconstructed temperatures for the -17 horizon (c. 10 m lower stratigraphically than the +15 horizon, Fig. 2) as c. 18 °C, in close agreement to that for the same level from Stokke et al.²² (Fig. 7).

Whilst global temperatures show a general cooling after the PETM and before ETM2^{2,53} (Fig. 1), these SSTs and bottom water temperatures from the Danish Basin are considerably cooler than any other reconstructed annual SSTs or bottom water temperatures during this interval^{54,55} (e.g. Figs. 1c and 7). Indeed, the Polar Regions⁵⁴ give average annual SSTs for the Arctic of 17–25 °C⁵⁶, and c. 24–34 °C for the Antarctic^{57,58} (Fig. 7), precluding the possibility of annual freezing polar temperatures^{2,59}. Thus, the very low surface and deep temperatures observed in the Danish Basin (and possibly the broader Nordic Seas region⁴) during the period between PETM and ETM2, appear to be a regionalised phenomenon. Stokke et al.²² propose that such cooling in the Nordic Seas region could be driven by multiple highly explosive eruptive phases of the nearby NAIP, which may have released sulphuric acid aerosols into the troposphere, where the sulphur has a residence time of weeks and could cause cooling on a regional, rather than global, scale²². Evidence for this hypothesis comes from the numerous, thick ash horizons in the post-PETM strata of the Fur Formation, and indeed glendonites are often found just below thicker ash horizons (Fig. 2). Furthermore, the unique paleogeography of the region might have promoted a bias towards winter temperatures in the bottom waters of the basin, leading to the conditions favourable for ikaite growth in the basin floor. Today, relatively cool and dense bottom shelf and slope waters form around many mid latitude continental shelf areas, by dense water cascades formed by evaporation and winter cooling or freezing⁶⁰. Semi-enclosed or enclosed basins are particularly susceptible to such surface density increases, as wind-driven winter cooling of the surface can result in strong density differences between stratified surface and deep water layers^{60,61}. For example, during cold, dry winters, in the Gulf of Lion and the Adriatic Sea, cold northerly Mistral and north-easterly Bora winds, respectively, bring cold dry air from the continent and cause such cascading events by surface cooling^{61,62}. Such an effect is likely in the Eocene Danish Basin and/or Nordic seas considering the paleolatitude and paleogeography (Fig. 1); the prevailing wind direction in the Nordic seas is believed to be westerly with occasional cold winter winds from the North^{63,64}. Such northerly cold winds could drive the surface cooling necessary to trigger cascading events that would bring cold surface waters down to the basin floor, where they flow southward, and, due to the stratification of the basin, gradually become de-oxygenated by the high productivity in the North Sea –Danish Basin. The relatively small scale of such cascading events, both in extent (0.5–1°) and duration (a few days), is testable in climate models, but at present below the scale of most current GCM simulations, which typically use a grid size of ~3°, and tend to generate monthly or yearly averages. Nonetheless, some GCM simulations show intermediate deep water formation in the proto-North Atlantic under some middle Eocene grid configurations⁶⁴.

In summary, the temperatures derived by clumped isotope thermometry from the glendonites and concretions record a snapshot of low (c. 5 °C) bottom water temperatures during the Early Eocene that cannot be explained by diagenetic effects, and

are consistent with current natural ikaite-bearing sites. Together with SSTs (representing a longer time span) of 8–15 °C derived from our TEX₈₆ data, this study indicates that seawater temperature profiles in the Danish Basin are seemingly contrary to global temperature reconstructions for the earliest Eocene, on both short and long timescales. When coupled with observations of multiple glendonite-bearing horizons in Svalbard, and given a lack of similar findings in the Arctic during this time, it is evident that this observed cooling is a regional phenomenon. Multiple eruptive phases of the nearby North Atlantic Igneous Province have been proposed as the driver for such cooling, which resulted in much colder winters and triggered short-duration density-driven cascading events that brought cold water to the seafloor and promoted the growth of ikaite in the 45 °N Danish Basin. Whilst beyond the scope of this study, assessment of temperature changes across the glendonite-bearing horizons and into these thicker NAIP ash horizons, and high-resolution GCM simulations, are recommended for future studies to assess the magnitude and extent of such cold episodes.

Methods

Sample collection and preparation. The glendonites are found associated with carbonate concretions in the Fur Formation diatomite, close to or within ash horizons, in three intervals in the succession, namely, at or close to the +15 to +19 ash horizons, at the +51 horizon, and between the +60 to +62 layers (Fig. 2). They may be up to 1.5 m in diameter, and are found either within concretions or on their own. Glendonite and concretion samples were provided from the Museum Mors collection by Bo Pagh Schultz and Henrik Madsen. Samples of diatomite and volcanic ash were collected at the Egerslev quarry, Mors.

The c. 0.5 m diameter concretions containing glendonites, and the individual glendonites not in concretions were cut in half vertically. The glendonite blades were also cut across a vertical and horizontal cross section, for thin section preparation.

SEM, CL and light microscopy. Polished thin sections were examined using a polarising light microscope, and cathodoluminescence (CL) petrography was performed using a CITL Mk5-2 Optical Cathodoluminescence System, operating at an accelerating voltage of ≤10 kV and current of ≤265 μA. Selected thin sections were examined using a Quanta FEG 650 SEM at the University of Exeter Penryn Campus at 15 kV with a working distance of 12 mm using the backscatter electron detector. Element maps were collected using a double EDS detector; maps made using software provided by Bruker.

Stable isotope and minor element analysis. Samples for stable isotope analysis were prepared by stepwise drilling horizontally across and vertically up the freshly cut surface of the concretion and glendonite (ca. 100 mm increments; ca. 2 mm drill depth; ca. 1 mm drill bit diameter) using a handheld drill (Supplementary Fig. 3). Minor element analyses were performed using an Agilent 5110 VDV ICP-OES at the Camborne School of Mines, University of Exeter. The minor element data are expressed as ratios to Ca. Carbon and oxygen isotope analysis of the calcite was performed at the University of Copenhagen using an Isoprime triple collector Isotope Ratio Mass Spectrometer using ~0.5 mg of powdered sample. Carbon and oxygen isotope ratios are expressed in standard delta notation as per mil deviation from the Vienna Pee Dee Belemnite (VPDB) standard.

The reproducibility of the measurements determined by the S.D. of in-house reference materials was 0.08‰ for δ¹⁸O and 0.04‰ for δ¹³C.

Clumped isotopes. Brown (primary, ikaite-derived, Type I) calcite was separated from late-stage calcite spar (Type III calcite) by smashing portions of the glendonites and hand-picking the brown and transparent calcite into separate vials using tweezers. The separated brown and white calcite samples were then powdered using an agate mortar and pestle. Concretionary calcite samples were taken using a hand-held drill (1 mm drill bit).

To test whether glendonite calcite may be reliably used for clumped isotope thermometry, sub-samples of Recent carbonates from the Kola Peninsula were analysed (66°28' N, 35°19' E). Glendonite calcite (lacking the Type III spar), sedimentary carbonate, and mussel and bivalve aragonite from the same sample were analysed by clumped isotope thermometry following the same method as the Fur Formation carbonates (described below). The Δ₄₇ values for Quality control test of Recent Kola Peninsula samples range between 0.748 and 0.761, yielding temperatures of 2–5 °C, all within error of each other at the 95 % ci (see Supplementary dataset).

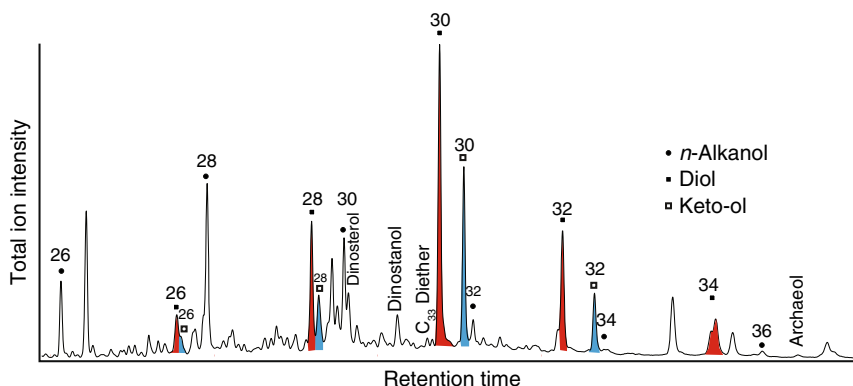


Fig. 5 Biomarker distribution for +15 concretion. Chromatogram showing the biomarker distribution from +15 concretion.

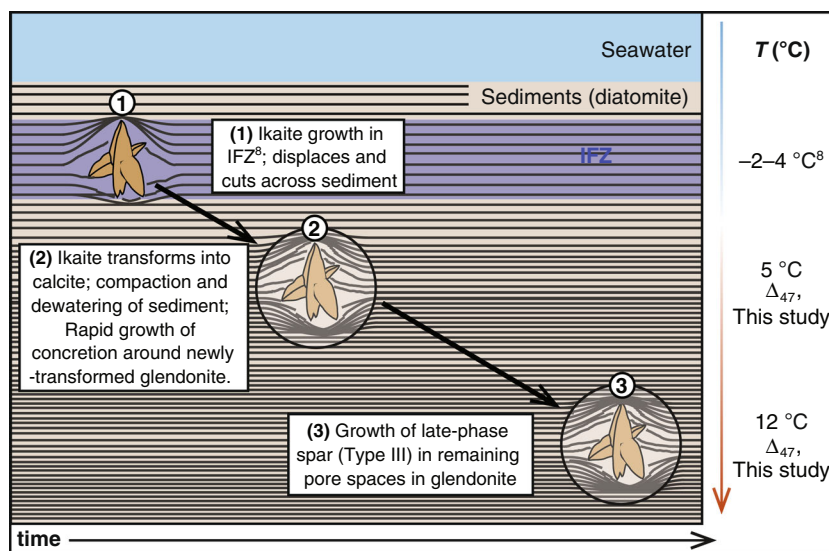


Fig. 6 Model for ikaite growth and transformation to glendonite. This model is based on Zhou et al.⁸, Lu et al.¹¹ and Vickers et al.¹²; clumped and stable isotopic and minor element analysis, and visual and microscopic observations on the Fur Formation glendonites (this study).

Powdered samples were then transferred to ETH, Zurich for clumped isotope analysis. Clumped isotope measurements were carried out at the ETH Zurich using a ThermoFisher Scientific MAT253 mass spectrometer coupled to a Kiel IV carbonate preparation device, following the methods described in Müller et al.⁶⁵. The Kiel IV device included a PoraPakQ trap kept at $-40\text{ }^{\circ}\text{C}$ to eliminate potential organic contaminants. Samples were measured between November 2018 and July 2019 by measuring maximum 3 replicates of each sample per measuring session which consists generally of 24 samples of 130–150 μg interspersed with 20 replicates of each of the three carbonate standards ETH-1, ETH-2 and ETH-3⁶⁶. The samples were analysed in LIDI mode with 400 s of integration of sample and reference gas. The calculations and corrections were done with the software Easotope⁶⁷ using the revised “Brand parameters” for ^{17}O correction as suggested by Daëron et al.⁶⁸. The data are reported with respect to the carbon dioxide equilibration scale CDES. The Peirce elimination criterion was applied to detect and remove outliers⁶⁹. This resulted in the elimination of two replicate analyses from the dataset out of a total of 98 measurements (see Supplementary dataset).

Temperatures were calculated using the Kele et al.⁷⁰ calibration recalculated with the “Brand parameters” and the new accepted values for the ETH standards as reported in Bernasconi et al.⁶⁶. The 1 S.D. uncertainties for the clumped isotope measurements, calculated from 86 replicate analyses are between 0.02‰ and 0.03‰. Potential isobaric interferences were monitored with the mass 49 parameter and the Δ_{48} offset as defined by John and Bowen⁶⁷. The mean Δ_{48} offset value of the samples is 0.1 ± 0.3 (1 S.D.) ‰, and all replicates, with the exception of one measurement, have values lower than 0.7 ‰. The measurement with a higher Δ_{48} offset value (2 ‰) is from sample MLV gl 9; it was not removed from the dataset because it does not affect appreciably the sample mean (i.e., exclusion changes average by 1 ppm). The values obtained for the mass 49 parameter also do not suggest the presence of contamination. Samples have an average value of 0.02, and all replicates have values lower than 0.14.

Biomarkers. Approximately 30 g of powdered, dry sample (glendonite, concretion, diatomite) was Soxhlet-extracted using DCM:MeOH 2:1. Sulphur was removed using activated copper turnings. Extracts were dried over Na_2SO_4 and aliquots of the total lipid extract were derivatised with BSTFA and pyridine for 1 h, dissolved in ethylacetate, and analysed by GC-MS using a 30 m DB5 column of 0.25 mm ID and 0.25 μm film thickness as previously described³⁵. Positional diol isomers co-eluted, and were semi-quantified based on their characteristic m/z 271, 285, 299, 313, 327, 341, 355, 369³⁹. A second aliquot was analysed for GDGTs (TEX₈₆) and Alkenones (U^{K}_{37}) using a Dionex LPG-U3400 (SDN) UHPLC liquid chromatography system and Thermo Scientific Q Exactive Focus mass spectrometer with Atmospheric Pressure Chemical Ionisation (APCI). The standard GDGT analysis method from Hopmans et al.⁷¹ was used, but slightly adapted to this high performance instrument employing a single Waters Acquity UPLC, BEH HILIC 1.7 μm (150 \times 2.1 mm, 1.7 μm) column and precolumn at 40 $^{\circ}\text{C}$, a flow of 600 $\mu\text{l min}^{-1}$ and starting at 5% B (isocratic from 0–3 min), rising to 18% B at 5 min (isocratic 5–10 min), rising to 35% B at 15 min and 100% B at 17.4 min, with 2.6 min re-equilibration time, which slightly shortened the analysis time. APCI was carried out in positive polarisation mode, at a capillary temperature of 275 $^{\circ}\text{C}$. Masses were scanned from m/z 200 to 2000, and resolved to 70,000 at m/z 200, with mass calibration carried out externally in electro spray ionisation mode, using auto-calibration Pierce LTQ Velos ESI positive ion calibration solution (n-butylamine, caffeine, MRFA, and Ultramark 1621). Alkenone isomers were separated by mass resolution at 10 ppm (using m/z 531.54994 (C37:2), 529.53429 (C37:3), 545.56559 (C38:2), and 543.54994 (C38:3)) and validity of U^{K}_{37} values was monitored using an alkenone standard (kindly provided by I. D. Bull, University of Bristol, and S. Rowland, University of Plymouth). GDGTs were identified based on retention times and accurate masses: using m/z 1302.32267 (GDGT-0), 1300.30702 (GDGT-1), 1298.29137 (GDGT-2), 1296.27572 (GDGT-3), 1292.24442 (Cren / Cren isomer); 1022.00967 (brGDGT-1a), 1019.99402 (brGDGT-1b),

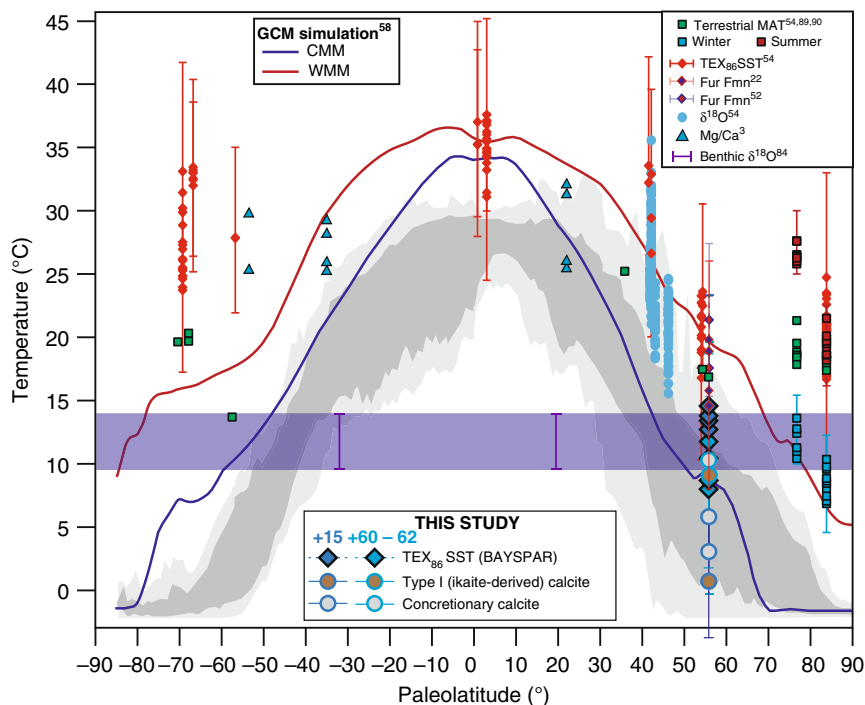


Fig. 7 Compilation of early Eocene global temperature estimates. This spans the interval between PETM and ETM2/EEO (55 – 54 Ma⁸⁵). New Δ_{47} bottom water temperatures and biomarker-derived terrestrial mean annual temperatures (MBT/CBT, using the calibration of Peterse et al.⁸⁸), foraminiferal $\delta^{18}\text{O}$ temperatures, and TEX_{86} SSTs (recalibrated using BAYSPAR³¹ as compiled by Hollis et al.⁵⁴. TEX_{86} SSTs from Stokke et al.²² show data from between ash horizons -13 and $+101$, excluding those with $\text{BIT} > 0.4$ and $\Delta\text{RI} \geq 0.3$. Summer and winter terrestrial temperatures by bioclimatic analysis from Lomonosov Ridge⁸⁹, and from Russia⁹⁰. Reevaluated Mg/Ca data from the compilation of Evans et al.³. Error bars for biomarker and clumped isotope temperature reconstructions (both published and this study) denote the 95% confidence level. GCM simulations for EEO from Davies et al.⁵⁹ show modelled mean SSTs for warm and cold months (red and blue lines, respectively), from the HadCM3L model, at 1200 ppm CO_2 . Modern mean annual temperature and seasonal range in SST³ are shown (dark- and light-grey shading, respectively). Bottom water temperature ranges from benthic foraminifera shown in blue shading⁵⁵. CMM cold month mean, WMM warm month mean.

1017.97837 (brGDGT-Ic), 1036.02532 (brGDGT-IIa+IIa'), 1034.00967 (brGDGT-IIb+IIb'), 1031.99402 (brGDGT-IIc+IIc'), 1050.04097 (brGDGT-IIIa+IIIa'), 1048.02532 (brGDGT-IIIb+IIIb'), and 1046.00967 (brGDGT-IIIc+IIIc'). Indices of sediments used during a Round Robin study⁷² (Supplementary Fig. 6A, B) were determined to compare our result with values from other laboratories. Sediment A gave a TEX_{86} value of 0.589 and a BIT value of 0.965 (round robin⁷² mean TEX_{86} 0.540 \pm 0.053, BIT 0.954 \pm 0.022), and sediment C gave a TEX_{86} value of 0.704 and a BIT value of 0.051 (round robin⁷² mean TEX_{86} 0.0702 \pm 0.023, BIT 0.043 \pm 0.013). Comparison with an in-house standard at the University of Bristol kindly provided by D. Naafs and R. Pancost gave a TEX_{86} value of 0.552 and a BIT value of 0.095 (TEX_{86} 0.55, BIT 0.07⁷³; Supplementary Fig. 6C).

The Long Chain Diol Index (LDI) and fractional abundance of the C_{32} 1,15-diol were used for SST reconstructions, and as indicators for upwelling, nutrient or freshwater input^{37,38,72,74} (e.g. Diol index 2 and FC_{32} ; Table 2). UK_{37} and the core-top calibration³⁷ were used for SST calculations and BAYSPAR³¹ was used for conversion of TEX_{86} into paleotemperatures. The BIT value was calculated as defined by Hoppmans et al.⁷⁵ and was below 0.3 for all samples except for the sediments. However, the mass spectrometric method used is known to slightly overestimate BIT values⁷².

Water depth reconstruction for the Eocene North Sea Basin. As discussed by Rasmussen et al.⁷⁶ (p. 6) depth estimates for the Eocene sea of the mo-clay area (principally the islands of Mors and Fur) have ranged from 50 m^{77,78} to a few hundred metres⁵ (maximum 500 m) based on various fossil groups including diatoms and fishes. The Stolleklint Clay was clearly deposited at shallower conditions than the overlying Fur Formation⁵. Diatom assemblages of the Fur Formation are dominated by neritic taxa comprising e.g. *Stephanopyxis turri*, *Trinacria* spp. and *Paralia* spp.⁷⁹, which also include frequent resting spores (e.g. *Pterotheca* spp. and *Chaetoceros* spp.). Strictly benthic taxa are rare (e.g. *Arachnodiscus* spp. cf.⁷⁹) while so-called tycho plankton (benthic diatoms occasionally carried into the plankton) and planktic species are more common. Today, *Chaetoceros* resting spores are often common in coastal regions under influence of coastal upwelling⁸⁰, which independently favour the upwelling hypothesis discussed above. The rare occurrence of strictly benthic diatoms together with the existence of different oceanic fishes challenge the hypothesis of a water depth at less than 50 m. Taken

altogether, the fossil evidence suggests a neritic (shelf), low-energy paleoenvironment for the Fur Formation, possibly with an average depth fluctuating around 200 m.

Burial heating reconstruction for the Fur Formation. The opal-A/-CT ratio may be recognised as an indicator of burial diagenesis because several studies have shown that the opal-A to opal-CT transformation is primarily time-temperature dependent⁸¹, but also pH variations of the pore fluids may affect the transformation⁸². Pedersen et al.⁴⁷ calculated that the Fur Formation diatomite contains 45–65% opal, 30–45% clay minerals and 10% volcanic dust. The opal is by far dominated by biogenic opal-A (amorphous silica) from the diatom frustules with only traces of recrystallised opal-CT, leading to the assumption that dissolution of opal-A is at a minimum⁴⁷. Petersen⁴⁸ studied the mineralogy of scattered hardened beds in the lowermost 7 m of the Fur Formation and showed that the hardened beds are dominated by opal-CT interbedded with soft diatomite consisting primarily of opal-A. He speculated that the precipitation of opal-CT may have been related to the enormous volume of volcanic ash, which periodically was brought to the marine environment directly and from the surrounding terrestrial areas, where it subsequently was transported by rivers into the sea⁴⁸. Amorphous silica (opal-A) dissolves and is replaced by opal-CT, usually at temperatures around 50–70 °C, which corresponds to about 1.5–2 km of overburden at average geothermal gradients⁸³, but the depth of the opal-A/-CT transformation zone may vary considerably according to local physical, chemical and lithological conditions. In exploration well 35/10-1 in North Viking Graben in the Norwegian part of the North Sea, the opal-A/-CT transformation zone is situated at a burial depth close to 850 m⁸¹.

A very low degree of thermal alteration is supported by the excellent preservation of morphological characters in the diatom flora throughout the formation (Rasmussen, pers. obs.) and light-coloured and well-preserved dinoflagellate cysts, pollen and spores, which indicate very low colour alteration values (TAI 1 or TAI 1+) and only insignificant burial heating (Dr. Claus Heilmann-Clausen, pers. comm. 2020). Colour alteration is both temperature and time dependent, and it was estimated by Hartkopf-Fröder et al.⁸⁴ that a TAI value of 2 from sediments heated for 10 Ma indicates a maximum burial temperature of almost 65 °C, while TAI 2 from sediments heated for 55 Ma indicates about 40–45 °C. Thus, TAI values of 1 or 1+ from the Fur Formation

indicate immature conditions with maximum burial temperatures lower than these estimates. In addition, McNamara et al.⁴⁶ (Supplementary Notes p. 6) estimated that the minimum burial depth of the Fur Formation was 100–150 m, corresponding to burial at a temperature of 40–45 °C.

Thus, it may be estimated that the burial temperatures probably reached a level around 45 °C with quite similar minimum and maximum burial temperature estimates.

Data availability

Data generated during this study are available for download in a supplementary spreadsheet. Source data are provided with this paper.

Code availability

No codes were generated during this study.

Received: 2 December 2019; Accepted: 21 August 2020;

Published online: 18 September 2020

References

- Price, G. D. The evidence and implications of polar ice during the Mesozoic. *Earth-Sci. Rev.* **48**, 183–210 (1999).
- Cramwinckel, M. J. et al. Synchronous tropical and polar temperature evolution in the Eocene. *Nature* **559**, 382–386 (2018).
- Evans, D. et al. Eocene greenhouse climate revealed by coupled clumped isotope-Mg/Ca thermometry. *Proc. Natl Acad. Sci. USA*. **115**, 1174–1179 (2018).
- Spielhagen, R. F. & Tripathi, A. Evidence from Svalbard for near-freezing temperatures and climate oscillations in the Arctic during the Paleocene and Eocene. *Palaeogeogr. Palaeoclimatol., Palaeoecol.* **278**, 48–56 (2009).
- Pedersen, G. K. et al. Molerområdet geologi – sedimenter, fossiler, askelag og glacialtektonik. *Geologisk Tidsskr.* **2011**, 41–135 (2012).
- Stickley, C. E. et al. Evidence for middle Eocene Arctic sea ice from diatoms and ice-rafted debris. *Nature* **460**, 376 (2009).
- Marland, G. The stability of CaCO₃·6H₂O (ikaite). *Geochimica et Cosmochimica Acta* **39**, 83–91 (1975).
- Zhou, X. et al. Ikaite abundance controlled by porewater phosphorus level: potential links to dust and productivity. *J. Geol.* **123**, 269–281 (2015).
- Tollefsen, E., et al. Ikaite nucleation at 35 °C challenges the use of glendonite as a paleotemperature indicator. *Sci. Rep.* **10**, 1–10 (2020).
- Greinert, J. & Derkachev, A. Glendonites and methane-derived Mg-calcites in the Sea of Okhotsk, Eastern Siberia: implications of a venting-related ikaite/glendonite formation. *Mar. Geol.* **204**, 129–144 (2004).
- Lu, Z. et al. An ikaite record of late Holocene climate at the Antarctic Peninsula. *Earth Planet. Sci. Lett.* **325**, 108–115 (2012).
- Vickers, M., Watkinson, M., Price, G. D. & Jerrett, R. An improved model for the ikaite-glendonite transformation: evidence from the Lower Cretaceous of Spitsbergen, Svalbard. *Nor. J. Geol.* **98**, 15 (2018).
- Kemper, E. Das Klima der Kreide-Zeit. *Geologisches Jahrb. Hann. Reihe A* **96**, 5–185 (1987).
- Qu, Y., Teichert, B., Birgel, D., Goedert, J. & Peckmann, J. The prominent role of bacterial sulfate reduction in the formation of glendonite: a case study from Paleogene marine strata of western Washington State. *Facies* **63**, 10 (2017).
- Torsvik, T. H. et al. “Phanerozoic polar wander, palaeogeography and dynamics”. *Earth-Sci. Rev.* **114**, 325–368 (2012).
- Schultz, B. P. et al. Palaeogene glendonites from Denmark. *Bull. Geol. Soc. Den.* **68**, 23–35 (2020).
- Pedersen, G. K. & Surlyk, F. The Fur Formation, a late Palaeocene ash-bearing diatomite from northern Denmark. *Bull. Geol. Soc. Den.* **32**, 43–65 (1983).
- Jones, M. T. et al. Mercury anomalies across the Palaeocene–Eocene thermal maximum. *Climate Past* **15**, 217–236 (2019).
- Larsen, L. M., Fitton, J. G. & Pedersen, A. K. Paleogene volcanic ash layers in the Danish Basin: compositions and source areas in the North Atlantic Igneous Province. *Lithos* **71**, 47–80 (2003).
- Bøggild, O. B. Den vulkanske aske i Moleret. *Dan. Geologiske Undersøgelse* **2** (33), 84 (1918).
- Storey, M., Duncan, R. A. & Swisher, C. C. Paleocene-Eocene thermal maximum and the opening of the northeast Atlantic. *Science* **316**, 587–589 (2007).
- Stokke, E. W., Jones, M. T., Tierney, J. E., Svensen, H. H. & Whiteside, J. H. Temperature changes across the Paleocene-Eocene Thermal Maximum—a new high-resolution TEX₈₆ temperature record from the Eastern North Sea Basin. *Earth Planet. Sci. Lett.* **544**, 116388 (2020).
- Charles, A. J., et al. Constraints on the numerical age of the Paleocene-Eocene boundary. *Geochem. Geophys. Geosyst.* **12**, 1–9 (2011).
- Westerhold, T., Röhl, U., McCarren, H. K. & Zachos, J. C. Latest on the absolute age of the Paleocene–Eocene Thermal Maximum (PETM): new insights from exact stratigraphic position of key ash layers +19 and –17. *Earth Planet. Sci. Lett.* **287**, 412–419 (2009).
- Śliwińska, K. K., Thomsen, E., Schouten, S., Schoon, P. L. & Heilmann-Clausen, C. Climate-and gateway-driven cooling of Late Eocene to earliest Oligocene sea surface temperatures in the North Sea Basin. *Sci. Rep.* **9**, 1–11 (2019).
- Inglis, G. N. et al. Mid-latitude continental temperatures through the early Eocene in western Europe. *Earth Planet. Sci. Lett.* **460**, 86–96 (2017).
- Brinkhuis, H. et al. Episodic fresh surface waters in the Eocene Arctic Ocean. *Nature* **441**, 606 (2006).
- Mudge, D. C. “Regional controls on Lower Tertiary sandstone distribution in the North Sea and NE Atlantic margin basins”. *Geol. Soc. Lond. Spec. Publ.* **403**, 17–42 (2015).
- Bonde, N. Palaeoenvironment in the ‘North Sea’ as indicated by the fish bearing Mo-clay deposit (Paleocene/Eocene), Denmark. *Mededelingen van de Werkgr. voor Tert. en Kwart. geologie* **16**, 3–16 (1979).
- Pedersen, G. K. Anoxic events during sedimentation of a Palaeogene diatomite in Denmark. *Sedimentology* **28**, 487–504 (1981).
- Tierney, J. E. & Tingley, M. P. A TEX₈₆ surface sediment database and extended Bayesian calibration. *Sci. Data* **2**, 1–10 (2015).
- Weijers, J. W., Schouten, S., Spaargaren, O. C. & Damsté, J. S. S. Occurrence and distribution of tetraether membrane lipids in soils: Implications for the use of the TEX₈₆ proxy and the BIT index. *Org. Geochem.* **37**, 1680–1693 (2006).
- Zhang, Y. G., Pagani, M. & Wang, Z. Ring Index: a new strategy to evaluate the integrity of TEX₈₆ paleothermometry. *Paleoceanography* **31**, 220–232 (2016).
- Wolff, G. A., Rukin, N. & Marshall, J. D. Geochemistry of an early diagenetic concretion from the Birchi Bed (L. Lias, W. Dorset, U.K.). *Org. Geochem.* **19**, 431–444 (1992).
- Lengger, S. K., Melendez, I. M., Summons, R. E. & Grice, K. Mudstones and embedded concretions show differences in lithology-related, but not source-related biomarker distributions. *Org. Geochem.* **113**, 67–74 (2017).
- Rampen, S. W. et al. Long chain 1, 13-and 1, 15-diols as a potential proxy for paleotemperature reconstruction. *Geochimica et Cosmochimica Acta* **84**, 204–216 (2012).
- Müller, P. J., Kirst, G., Ruhland, G., von Storch, I. & Rosell-Melé, A. Calibration of the alkenone paleotemperature index U_K³⁷ based on core-top from the eastern South Atlantic and the global ocean (60°N–60°S). *Geochimica et Cosmochimica Acta* **62**, 1757–1772 (1998).
- Lattaud, J. et al. The C₃₂ alkane-1, 15-diol as a tracer for riverine input in coastal seas. *Geochimica et Cosmochimica Acta* **202**, 146–158 (2017).
- de Bar, M. W., Rampen, S. W., Hopmans, E. C., Damsté, J. S. S. & Schouten, S. Constraining the applicability of organic paleotemperature proxies for the last 90 Myrs. *Org. Geochem.* **128**, 122–136 (2019).
- Salacup, J. M., Farmer, J. R., Herbert, T. D. & Prell, W. L. Alkenone paleothermometry in coastal settings: evaluating the potential for highly resolved time series of sea surface temperature. *Paleoceanogr. Paleoclimatol.* **34**, 164–181 (2019).
- Aquilina, A. et al. Biomarker indicators for anaerobic oxidizers of methane in brackish-marine sediments with diffusive methane fluxes. *Org. Geochem.* **41**, 414–426 (2010).
- Knittel, K. & Boetius, A. Anaerobic oxidation of methane: progress with an unknown process. *Annu. Rev. Microbiol.* **63**, 311–334 (2009).
- Zhang, Y. G. et al. Methane Index: a tetraether archaeal lipid biomarker indicator for detecting the instability of marine gas hydrates. *Earth Planet. Sci. Lett.* **307**, 525–534 (2011).
- Zachos, J., Pagani, M., Sloan, L., Thomas, E. & Billups, K. Trends, rhythms, and aberrations in global climate 65 Ma to present. *Science* **292**, 686–693 (2001).
- Lawrence, J. R., Gieskes, J. M. & Broecker, W. S. Oxygen isotope and cation composition of DSDP pore waters and the alteration of Layer II basalts. *Earth Planet. Sci. Lett.* **27**, 1–10 (1975).
- McNamara, M. E., Briggs, D. E., Orr, P. J., Field, D. J. & Wang, Z. Experimental maturation of feathers: implications for reconstructions of fossil feather colour. *Biol. Lett.* **9**, 20130184 (2013).
- Pedersen, G. K., Pedersen, S. A. S., Steffensen, J. & Pedersen, C. S. Clay content of a clayey diatomite, the Early Eocene Fur Formation, Denmark. *Bull. Geol. Soc. Denmark*, **51**, 159–177 (2004).
- Petersen, J. *Silikadiagenese, mineralogi og geokemi i den nedre del af Fur og Ølst Formationerne: mulige cykliske variationer i “Skiferserien”* Msc Thesis thesis, Århus University, (2016).
- Stolper, D. A., Eiler, J. M. & Higgins, J. A. Modeling the effects of diagenesis on carbonate clumped-isotope values in deep-and shallow-water settings. *Geochimica et Cosmochimica Acta* **227**, 264–291 (2018).
- Henkes, G. A. et al. Temperature limits for preservation of primary calcite clumped isotope paleotemperatures. *Geochimica et cosmochimica acta* **139**, 362–382 (2014).

51. Chen, S., et al. Mechanism of Solid-State Clumped Isotope Reordering in Carbonate Minerals from Aragonite Heating Experiments. *Geochimica et Cosmochimica Acta* **258**, 156–173 (2019).
52. Schoon, P. L., Heilmann-Clausen, C., Schultz, B. P., Damsté, J. S. S. & Schouten, S. Warming and environmental changes in the eastern North Sea Basin during the Palaeocene–Eocene Thermal Maximum as revealed by biomarker lipids. *Org. Geochem.* **78**, 79–88 (2015).
53. Frieling, J. et al. Palaeocene–Eocene warming and biotic response in the epicontinental West Siberian Sea. *Geology* **42**, 767–770 (2014).
54. Hollis, C. J. et al. The DeepMIP contribution to PMIP4: methodologies for selection, compilation and analysis of latest Paleocene and early Eocene climate proxy data, incorporating version 0.1 of the DeepMIP database. *Geoscientific Model Dev.* **12**, 3149–3206 (2019).
55. Barnett, J. S. et al. A high-fidelity benthic stable isotope record of late Cretaceous–early Eocene climate change and carbon-cycling. *Paleoceanogr. Paleoclimatol.* **34**, 672–691 (2019).
56. Sluijs, A. et al. Warm and wet conditions in the Arctic region during Eocene Thermal Maximum 2. *Nat. Geosci.* **2**, 777–780 (2009).
57. Sluijs, A. et al. Southern ocean warming, sea level and hydrological change during the Paleocene–Eocene thermal maximum. *Climate* **7**, 47–61 (2011).
58. Bijl, P. K. et al. Eocene cooling linked to early flow across the Tasmanian Gateway. *Proc. Natl Acad. Sci. USA* **110**, 9645–9650 (2013).
59. Davies, A., Hunter, S. J., Gréselle, B., Haywood, A. M. & Robson, C. Evidence for seasonality in early Eocene high latitude sea-surface temperatures. *Earth Planet. Sci. Lett.* **519**, 274–283 (2019).
60. Shapiro, G. I., Huthnance, J. M. & Ivanov, V. V. Dense water cascading off the continental shelf. *J. Geophys. Res.* **Oceans** **108**, 3390 (2003).
61. Ivanov, V. V., Shapiro, G. I., Huthnance, J. M., Aleynik, D. L. & Golovin, P. N. Cascades of dense water around the world ocean. *Prog. Oceanogr.* **60**, 47–98 (2004).
62. Ulses, C., Estournel, C., Bonnin, J., Durrieu de Madron, X. & Marsaleix, P. Impact of storms and dense water cascading on shelf-slope exchanges in the Gulf of Lion (NW Mediterranean). *J. Geophys. Res.* **113**, C02010 (2008).
63. Lunt, D. J. et al. The DeepMIP contribution to PMIP4: experimental design for model simulations of the EECO, PETM, and pre-PETM (version 1.0). *Geoscientific Model Dev.* **10**, 889–901 (2017).
64. Vahlenkamp, M. et al. Astronomically paced changes in deep-water circulation in the western North Atlantic during the middle Eocene. *Earth Planet. Sci. Lett.* **484**, 329–340 (2018).
65. Müller, I. A. et al. Carbonate clumped isotope analyses with the long-integration dual-inlet (LIDI) workflow: scratching at the lower sample weight boundaries. *Rapid Commun. Mass Spectrom.* **31**, 1057–1066 (2017).
66. Bernasconi, S. M. et al. Reducing uncertainties in carbonate clumped isotope analysis through consistent carbonate-based standardization. *Geochim. Geophys. Geosyst.* **19**, 2895–2914 (2018).
67. John, C. M. & Bowen, D. Community software for challenging isotope analysis: first applications of ‘Easotope’ to clumped isotopes. *Rapid Commun. Mass Spectrom.* **30**, 2285–2300 (2016).
68. Daëron, M., Blamart, D., Peral, M. & Affek, H. Absolute isotopic abundance ratios and the accuracy of $\Delta 47$ measurements. *Chem. Geol.* **442**, 83–96 (2016).
69. Zaarur, S., Affek, H. P. & Brandon, M. T. A revised calibration of the clumped isotope thermometer. *Earth Planet. Sci. Lett.* **382**, 47–57 (2013).
70. Kele, S. et al. Temperature dependence of oxygen- and clumped isotope fractionation in carbonates: a study of travertines and tufas in the 6–95 °C temperature range. *Geochimica et Cosmochimica Acta* **168**, 172–192 (2015).
71. Hopmans, E. C., Schouten, S. & Sinninghe Damsté, J. S. The effect of improved chromatography on GDGT-based palaeoproxies. *Org. Geochem.* **93**, 1–6 (2016).
72. Schouten, S. et al. An interlaboratory study of TEX₈₆ and BIT analysis of sediments, extracts, and standard mixtures: TEX₈₆ and BIT Index Round Robin. *Geochim. Geophys. Geosyst.* **14**, 5263–5285 (2013).
73. Lengger, S. K. et al. Archaeal and bacterial glycerol dialkyl glycerol tetraether (GDGT) lipids in environmental samples by high temperature-gas chromatography with flame ionisation and time-of-flight mass spectrometry detection. *Org. Geochem.* **121**, 10–21 (2018).
74. Rampen, S. W. et al. Evaluation of long chain 1, 14-alkyl diols in marine sediments as indicators for upwelling and temperature. *Org. Geochem.* **76**, 39–47 (2014).
75. Hopmans, E. C. et al. A novel proxy for terrestrial organic matter in sediments based on branched and isoprenoid tetraether lipids. *Earth Planet. Sci. Lett.* **224**, 107–116 (2004).
76. Rasmussen, J. A., Madsen, H., Schultz, B. P., Sylvestersen, R. L. & Bonde, N. In *Field Trip Guidebook. 2nd International Mo-clay Meeting, 2–4 Nov. 2016* 35 pp (Museum, Skive and Fossil and Mo-clay Museum, Museum Mors, Nykøbing Mors, 2016).
77. Willumsen, P. Palynology of the Lower Eocene deposits of northwest Jutland, Denmark. *Bull. Geol. Soc. Den.* **52**, 141–157 (2004).
78. Mittlehner, A. G. Palaeoenvironments in the North Sea Basin around the Paleocene–Eocene boundary: evidence from diatoms and other siliceous microfossils. *Geol. Soc. Lond. Spec. Publ.* **101**, 255–273 (1996).
79. Fenner, J. Diatoms of the Fur formation, their taxonomy and biostratigraphic interpretation—results from the Harre borehole, Denmark. *Aarhus Geosci.* **1**, 99–163 (1994).
80. Romero, O. E. & Armand, L. K. In *The Diatoms: Applications for the Environmental and Earth Sciences*. (eds Smol, J.P. & Stoermer, E.F.), pp. 373–392 (Cambridge University Press, 2010).
81. Wrona, T., Jackson, C. A. L., Huuse, M. & Taylor, K. G. Silica diagenesis in Cenozoic mudstones of the North Viking Graben: physical properties and basin modelling. *Basin Res.* **29**, 556–575 (2017).
82. Williams, L. A., Parks, G. A. & Crerar, D. A. Silica diagenesis; I, solubility controls. *J. Sediment. Res.* **55**, 301–311 (1985).
83. Bjørlykke, K. *Petroleum Geoscience: From Sedimentary Environments to Rock Physics* (Springer, 2010).
84. Hartkopf-Fröder, C., Königshof, P., Littke, R. & Schwarzbauer, J. Optical thermal maturity parameters and organic geochemical alteration at low grade diagenesis to anchimetamorphism: a review. *Int. J. Coal Geol.* **150**, 74–119 (2015).
85. Ogg, J. G., Ogg, G. & Gradstein, F. M. A concise geologic time scale: 2016. *Elsevier* 133–149 (2016).
86. Heilmann-Clausen, C., Nielsen, O. & Gersner, F. Lithostratigraphy and depositional environments in the Upper Paleocene and Eocene of Denmark. *Bull. Geol. Soc. Den.* **33**, 287–323 (1985).
87. Perch-Nielsen, K. New silicoflagellates and a silicoflagellate zonation in north European Palaeocene and Eocene diatomites. *Bull. Geol. Soc. Den.* **25**, 27–40 (1976).
88. Peterse, F. et al. Revised calibration of the MBT–CBT paleotemperature proxy based on branched tetraether membrane lipids in surface soils. *Geochimica et Cosmochimica Acta* **96**, 215–229 (2012).
89. Willard, D. A. et al. Arctic vegetation, temperature, and hydrology during Early Eocene transient global warming events. *Glob. Planet. Change* **178**, 139–152 (2019).
90. Suan, G. et al. Subtropical climate conditions and mangrove growth in Arctic Siberia during the early Eocene. *Geology* **45**, 539–542 (2017).

Acknowledgements

Funding for this study was received from the Danish Council for Independent Research–Natural Sciences provided for C.K. (DFG - 7014-00142) and Swiss SNF (200021_169849) provided for S.M.B. We would like to thank Joe Pickles and Sam Broom-Fendley (CSM Penryn) for SEM and CL analyses; and Madalina Jaggi (ETH Zurich) for clumped isotope measurements. We thank Steve Rowland, Ian Bull, Rich Pancost and David Naafs for sharing the standards used in the GDGT analysis. We extend our thanks to Morgan Jones and Ella Stokke for their critical input interpreting the data and for construction of the age model, and further to Claus Heilmann-Clausen (Aarhus University) and Julius Petersen (Skamol) for TAI and opal-A / opal-CT data, respectively.

Author contributions

M.L.V. contributed the ideas, the main writing of the manuscript, prepared all samples for analyses, and assisted in the running and interpretation of the analyses in all institutions. S.L. and P.M. mentored the biomarker extraction, conducted the instrumental analyses at the University of Plymouth, and performed the data reduction and interpretation of the biomarker signals. S.M.B. and A.F.B. ran and interpreted the clumped isotope analysis at ETH Zurich, and wrote the methods and parts of the interpretation of the clumped isotope data in the manuscript. N.T. contributed the ideas, planned for analysis, supervised the stratigraphy, and helped hugely with interpretation of the clumped isotope data. C.V.U. ran minor element analysis at CSM, Penryn, and assisted in the interpretation of the data. B.P.S. provided access to the glendonite and concretion samples, and assisted in the interpretation of the data in terms of glendonite formation. C.J.B. made the palaeogeographic reconstruction using the palaeomagnetic reference frame and helped with the interpretation, providing the hypothesis for the cascading events to explain the observations of cold bottom waters in a usually-stratified basin. J.A.R. wrote the sections on the burial history and water depth reconstructions for the Fur Formation. J.A.R. also collected the bulk sediment samples used in the biomarker extraction, and assisted in the interpretation of the biomarker signals. I.W.H. assisted in collection of the samples and the writing of the manuscript. C.K. provided the funding for the study and assisted in sample collection and data interpretation.

Competing interests

The authors declare no competing interests.

Additional information

Supplementary information is available for this paper at <https://doi.org/10.1038/s41467-020-18558-7>.

Correspondence and requests for materials should be addressed to M.L.V.

Peer review information *Nature Communications* thank John Eiler, Zunli Lu, Rosalind Rickaby, and Appy Sluijs for their contributions to the peer review of this work.

Reprints and permission information is available at <http://www.nature.com/reprints>

Publisher's note Springer Nature remains neutral with regard to jurisdictional claims in published maps and institutional affiliations.



Open Access This article is licensed under a Creative Commons Attribution 4.0 International License, which permits use, sharing, adaptation, distribution and reproduction in any medium or format, as long as you give appropriate credit to the original author(s) and the source, provide a link to the Creative Commons license, and indicate if changes were made. The images or other third party material in this article are included in the article's Creative Commons license, unless indicated otherwise in a credit line to the material. If material is not included in the article's Creative Commons license and your intended use is not permitted by statutory regulation or exceeds the permitted use, you will need to obtain permission directly from the copyright holder. To view a copy of this license, visit <http://creativecommons.org/licenses/by/4.0/>.

© The Author(s) 2020