



Is intracranial volume a risk factor for *IDH*-mutant low-grade glioma? A case–control study

Lisa Millgård Sagberg^{1,2} · Even Hovig Fyllingen^{3,4} · Tor Ivar Hansen^{5,6} · Per Sveino Strand^{1,5} · Aril Løge Håvik^{7,8} · Terje Sundstrøm^{7,9} · Alba Corell^{10,11} · Asgeir Store Jakola^{10,11} · Øyvind Salvesen¹² · Ole Solheim^{1,5}

Received: 3 July 2022 / Accepted: 17 August 2022
© The Author(s) 2022

Abstract

Purpose Risk of cancer has been associated with body or organ size in several studies. We sought to investigate the relationship between intracranial volume (ICV) (as a proxy for lifetime maximum brain size) and risk of *IDH*-mutant low-grade glioma.

Methods In a multicenter case–control study based on population-based data, we included 154 patients with *IDH*-mutant WHO grade 2 glioma and 995 healthy controls. ICV in both groups was calculated from 3D MRI brain scans using an automated reverse brain mask method, and then compared using a binomial logistic regression model.

Results We found a non-linear association between ICV and risk of glioma with increasing risk above and below a threshold of 1394 ml ($p < 0.001$). After adjusting for ICV, sex was not a risk factor for glioma.

Conclusion Intracranial volume may be a risk factor for *IDH*-mutant low-grade glioma, but the relationship seems to be non-linear with increased risk both above and below a threshold in intracranial volume.

Keywords Brain neoplasms · Risk factors · Magnetic resonance imaging · Low-grade glioma · HUNT study

Introduction

Known risk factors for developing glioma include age, male sex, ionizing radiation, non-Hispanic white ethnicity, some specific germline variants, and a few rare hereditary

syndromes. There also seems to be an inverse relationship between risk of glioma and atopic diseases [1]. Since risk of glioma is about 1.3–1.6 times higher in men than in women [2], and men have larger brain volumes and about 40% more glial cells [3], it could be speculated that brain

Lisa Millgård Sagberg and Even Hovig Fyllingen have contributed equally to this work.

✉ Lisa Millgård Sagberg
lisa.millgard.sagberg@ntnu.no

¹ Department of Neurosurgery, St Olavs Hospital, Trondheim University Hospital, Trondheim, Norway

² Department of Public Health and Nursing, Norwegian University of Science and Technology, Trondheim, Norway

³ Department of Radiology and Nuclear Medicine, St Olavs Hospital, Trondheim University Hospital, Trondheim, Norway

⁴ Department of Circulation and Medical Imaging, Norwegian University of Science and Technology, Trondheim, Norway

⁵ Department of Neuromedicine and Movement Science, Norwegian University of Science and Technology, Trondheim, Norway

⁶ Department of Physical Medicine and Rehabilitation, St Olavs Hospital, Trondheim University Hospital, Trondheim, Norway

⁷ Department of Clinical Medicine, University of Bergen, Bergen, Norway

⁸ Department of Neurology, Molde Hospital, Molde, Norway

⁹ Department of Neurosurgery, Haukeland University Hospital, Bergen, Norway

¹⁰ Department of Neurosurgery, Sahlgrenska University Hospital, Gothenburg, Sweden

¹¹ Institute of Neuroscience and Physiology, Department of Clinical Neuroscience, University of Gothenburg, Sahlgrenska Academy, Gothenburg, Sweden

¹² Clinical Research Unit, Department of Clinical and Molecular Medicine, Norwegian University of Science and Technology, Trondheim, Norway

size, perhaps associated with the number of stem cell divisions needed to maintain the glial volume, may be a risk factor. Indeed, we previously observed a strong association between intracranial volume (ICV) and risk of high-grade glioma [4]. However, incidence, age distribution and sex ratio of low-grade gliomas are different from high-grade gliomas [5, 6], and whether there is also an association between ICV and risk of low-grade gliomas is still not studied.

In the present study, we sought to compare ICV in patients with *IDH*-mutant low-grade glioma to healthy controls to investigate the possible relationship between ICV (as a proxy for lifetime maximum brain size) and the risk of the disease. Further, we explored if potential associations between ICV and *IDH*-mutant low-grade glioma was dependent on sex and molecular subtypes.

Material and methods

Study design and study population

In this multicenter case–control study, we included consecutive patients aged ≥ 18 years with primary *IDH*-mutant WHO grade 2 glioma. The patients were recruited from three different neurosurgical centers that each serve a defined catchment region: (a) Sahlgrenska University Hospital (Göteborg, Sweden) from 2010 to 2018, (b) Haukeland University Hospital (Bergen, Norway) from 2013 to 2017, and (c) St. Olavs Hospital (Trondheim, Norway) from 2007 to 2020. Together, these departments serve a population of about 3,5 million inhabitants. Exclusion criteria were infratentorial tumor location, Chiari malformation, previous intracranial surgery, and missing three-dimensional (3D) MRI scans. The Trøndelag Health Study (The HUNT study) MRI cohort from the general Norwegian population was used as a control group [7]. This is a database of 1006 healthy volunteers aged 50–66 years [8].

Histopathology

IDH-status was determined by a neuropathologist using immunohistochemistry, fluorescence in situ hybridization (FISH), or multiplex ligation-dependent probe amplification (MLPA) methods, while 1p19q co-deletion was based on FISH, MLPA or from methylation array with analysis of copy number variation. In accordance with the 2021 WHO classification, we classified *IDH*-mutant tumors with 1p19q co-deletion as oligodendrogliomas and *IDH*-mutant tumors without 1p19q co-deletion as astrocytomas [9]. *IDH*-mutant tumors with missing 1p19q status were

classified as non-specified diffuse gliomas. One patient with 1p19q co-deletion and missing *IDH*-status was also included (as oligodendroglioma).

Intracranial tumor volume (ICV) calculations

An automated reverse brain mask method was used for ICV-calculations [10], where the method and workflow are described in a previous publication [4]. The earliest available 3D MRI scan (either diagnostic or preoperative) in each patient was used in the segmentation process of cases. Gadolinium contrast-enhanced T1-weighted 3D images were used in 138 cases, non-contrast enhanced T1-weighted images were used in 14 cases, while non-contrast enhanced T2-weighted images and T2 FLAIR images were used in one case each. The images were obtained using either a 1.5 or 3 Tesla scanner. All segmentations were visually quality assured by two of the authors (L.M.S and E.H.F). Minor segmentation revisions were performed by author E.H.F in two cases, where the automatic algorithm had excluded small parts of the ICV where tumors were adjacent to the dura. These segmentation volumes were only corrected in the tumor area to avoid bias by making manual changes to the segmentation volume in other areas. Segmentation corrections were performed in ITK-Snap version 3.6.0 for Mac [11]. ICV calculations in the control group were done in a previous study using the same automatic method [10].

Statistical analyses

Data are presented as means with standard deviations (SD) or medians with range. Differences between groups were compared using two-samples Kolmogorov–Smirnov test or independent samples *t*-test, as appropriate. To explore the possible association between ICV and risk of *IDH*-mutant low-grade glioma, binomial logistic regression analyses were initially performed with glioma as the dependent variable, and ICV (continuous) and sex (categorical) as covariates. However, assumptions for binary logistic regression were not met due to non-linearity of the continuous ICV variable with respect to the logit of the dependent variable as assessed by the Box-Tidwell procedure. Therefore, a logarithmic transformation of the ICV variable was added to the regression model, improving model fit. Likelihood-ratio tests were used to compare regression models with and without sex as a covariate, including interactions between sex and ICV, and sex and logarithm of ICV. Goodness-of-fit in the final model was assessed using the Hosmer–Lemeshow test. Statistical significance level was set to $p \leq 0.05$. Data analyses were performed using SPSS Statistics version 27

for Mac (IBM, Armonk, New York) and Stata version 17.0 for Mac (StataCorp LLC, College Station, Texas).

Results

A flow chart of the inclusion process is presented in Fig. 1. In total, 154 cases with primary *IDH*-mutant grade 2 gliomas were finally included (N=71, 27, and 56 from hospital a, b, and c, respectively). Median age was 59 years (range 50–67 years) in the normal population (i.e., controls), and 40 years (range 18–77 years) in the low-grade glioma population (i.e., cases).

In Fig. 2, boxplots showing the group distributions of ICV are presented separately for females and males. The group distributions were statistically significantly different in females ($p=0.026$), while there was only a trend in males ($p=0.092$).

Binomial logistic regression models with and without sex as a covariate were not statistically significantly different ($p=0.172$), implying that risk of *IDH*-mutant low-grade glioma was not associated with sex after adjusting for ICV. The final binomial logistic regression model therefore included ICV and logarithmic transformation of ICV as covariates, and is presented in Fig. 3. The model indicated a statistically significant non-linear increase in risk of glioma with increasing ICV above 1394 ml ($p<0.001$). However, the model also indicated an increase in risk of low-grade glioma with ICV on the lowest ends of the scale (<1394 ml). In total, only 16 of 154 cases (10.4%) had an ICV below this threshold.

In Table 1, mean ICV in different molecular subtypes are presented (non-specified diffuse gliomas are excluded, n = 17). As seen, mean ICV in females with oligodendroglioma

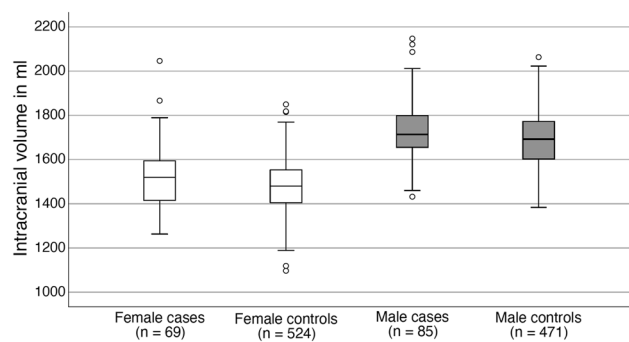


Fig. 2 Distributions of intracranial volumes in cases and controls

was 125 ml larger than in females with astrocytoma ($p<0.001$). In males, there was no statistically significant difference in mean ICV between cases with oligodendrogliomas and astrocytomas ($p=0.726$).

Discussion

In this multicenter case–control study based on population-based data, we found a non-linear relationship between ICV and risk of *IDH*-mutant low-grade glioma, with increased risk both above and below a threshold in intracranial volume. Although our study should be replicated by others, a relationship between ICV and risk of glioma seems likely.

Several other studies have found associations between body or organ size and risk of cancer, including lymphomas, leukemia, gastric cancer, testicular cancer, malignant melanoma, cervical cancer, colorectal cancer and breast cancer [12]. Indeed, a positive association between height, which is correlated to brain size [13, 14], has been reported for risk of primary brain tumors in adults [15–17]. It is therefore not

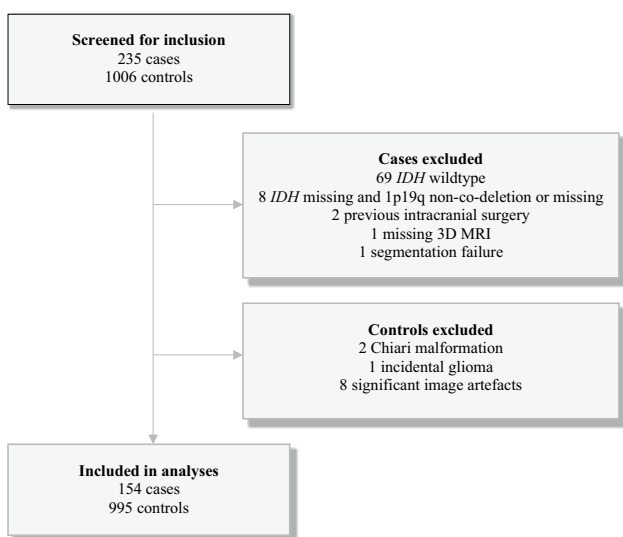


Fig. 1 Flow chart of the inclusion process

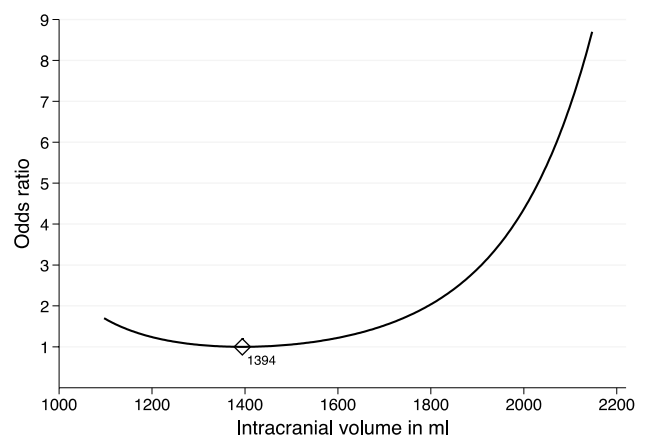


Fig. 3 Odds ratio of *IDH*-mutant low-grade glioma based on ICV. Graph is presented within the upper and lower range limits for ICV. The diamond shaped marker illustrates the ICV value of lowest risk

Table 1 Intracranial volumes in astrocytomas vs. oligodendrogliomas

	Females			Males		
	Astrocytoma (n = 29)	Oligodendro-glioma (n = 31)	<i>p</i> -value*	Astrocytoma (n = 33)	Oligodendro-glioma (n = 44)	<i>p</i> -value*
ICV, ml (mean ± SD)	1453 ± 102	1578 ± 153	< 0.001	1729 ± 156	1717 ± 138	0.726

Bold text indicates statistical significance

*Independent samples t-test

surprising that also ICV is associated with glioma risk, like we previously observed in high-grade gliomas [4].

The nature of the relationship between ICV and risk of *IDH*-mutant low-grade glioma appears to be non-linear, and the binomial logistic regression suggested higher risk both below and above an ICV threshold. However, as the large majority of both cases and controls in this study had ICV above the statistical threshold of lowest risk in the regression analyses, our results are mainly in line with our previous findings on the association between ICV and high-grade glioma [4]. A much-debated study on cancer etiology suggested that most cancers are caused by “bad luck” since risk of cancer in general is correlated to the lifetime number of stem cell divisions [18]. Although the number of glial cells in relation to ICV is not known, another study on our control population found that the relative size of white matter increases with increasing ICV [19]. Still, the possible increase in risk of low-grade glioma in the lower-end ICV cases in our data may not be clearly explained by number of cells at risk. The “bad luck” hypothesis has been criticized, and an evolutionary multistage model of carcinogenesis has been suggested to better explain findings in the same dataset [20]. This model may better reflect cancer etiology as a function of random DNA replication errors and Darwinian fitness, and although it does not directly explain our findings of increased risk in lower-end ICV cases, it suggests that the etiology of cancer is more complex than just random mutations. Genome-wide association studies have identified single nucleotide polymorphisms (SNP) associated with risk of glioma [21]. Further, statistical models for life-time glioma risk and prediction of glioma subtype based on SNPs, age and sex have been developed [22]. Different SNPs may possibly affect glioma risk both directly and indirectly through effects on ICV, though any such effects are currently undetermined. Another explanation is that our u-shaped statistical finding was based on rather few cases with small ICV and could be a result of overfitting.

In both the present data from low-grade glioma and our previous study in high-grade glioma, the epidemiologically well-documented higher risk of glioma in men [5] was no longer evident after adjustment for ICV. If there is a link

between organ size and lifetime number of stem cell divisions at risk of cancer [18], a reduced effect of sex on glioma risk after adjustment for ICV is expected since males in general have larger brains than females [3].

While we observed a linear relationship between ICV and risk of high-grade glioma [4], the current data suggests that the relationship may be non-linear for *IDH*-mutant low-grade glioma. Although this should be replicated by others, the impact of ICV as a potential risk factor may be different in low- and high-grade gliomas, perhaps reflected in the different age-specific incidence rates [6]. Since low-grade gliomas occur earlier, different mechanisms can be involved, and the potential relationship may also differ in molecular subgroups. For example, WHO grade 2 oligodendroglioma incidence is reported to be higher in males with an overall male-to-female ratio of 1.25, while the male-to-female ratio for glioblastoma is 1.34 [6]. Further, it has been reported that stem cell division rates decrease with high age, possibly explaining reduced risk of cancer in very old humans for certain types of malignancies [23]. Although subgroups are small and should be interpreted with caution, mean ICV was larger in females with oligodendroglioma compared to females with astrocytoma, while there was no statistically significant difference in ICV between molecular subtypes in males. In a study estimating number of glial cells in human brains, a slightly higher proportion of neocortical oligodendrocytes to astrocytes ratio in females compared to males was found [3]. However, the sample size was small and glial cell estimation is notoriously difficult [24]. As the ratio between oligodendrocytes and astrocytes in males and females in the entire brain is poorly mapped and possible sex-specific differences in this ratio with varying ICV is unknown, disentangling possible sex-specific relationships between glioma subtypes and ICV is highly complex.

Strengths and limitations

Strengths of the present study are the large, population-based glioma cohort from three different centers, and the large, representative population-based control group. This eliminates the risk of referral bias, and the external

validity should be high. In addition, the use of a refined automatic segmentation method for ICV eliminates the risk of observer-dependent assessment bias. Since accurate assessment of brain volume is impossible in glioma patients due to the infiltrative tumor growth, ICV was used as a proxy for lifetime maximum brain volume. Brain volume and ICV are found to be highly correlated, and ICV does neither change significantly after the age of 16 nor decline significantly with aging [25]. Further, as median age in the case population was lower than in the control population, life-time radiation exposure is highest in the control population. Consequently, the observed age difference in cases and controls is not likely to affect our results. A limitation of this study is that various MRI scanners were used in the glioma population, and we did not have scanner id in all patients. However, in our previous study the variance of the MRI-scanner (scanner id) was estimated at zero [4], and it is reasonable to assume that the results would have been similar in the present study. Another limitation is the lack of biological exploration in our study, such as possible biomarkers for stem cell division rates or other objective evidence to confirm ICV as a risk factor for glioma tumorigenesis.

Conclusions

Intracranial volume seems to be risk factor for *IDH*-mutant low-grade glioma, but the relationship may be non-linear with increased risk both above and below a specific threshold in intracranial volume.

Acknowledgements The HUNT Study is a collaboration between the HUNT Research Centre (Faculty of Medicine and Movement Sciences, Norwegian University of Science and Technology [NTNU]), Nord-Trøndelag County Council, Central Norway Health Authority, and the Norwegian Institute of Public Health. HUNT-MRI was funded by the Liaison Committee between the Central Norway Regional Health Authority and the Norwegian University of Science and Technology, and the Norwegian National Advisory Unit for functional MRI.

Author contributions Conception and design: OS, EHF, LMS. Acquisition of data: EHF, LMS, ASJ, ALH, TS, TIH, AC, PSS. Statistical analysis: EHF, LMS, ØS. Interpretation of data: LMS, EHF, OS. Drafting the article: LMS, EHF. Critically revising the article and approval of the final version: All authors.

Funding Open access funding provided by NTNU Norwegian University of Science and Technology (incl St. Olavs Hospital - Trondheim University Hospital). The study was partially funded by the Norwegian National Advisory Unit for Ultrasound and Image-Guided Therapy, St. Olavs Hospital, Trondheim, Norway. The funding sources for the HUNT Study were not involved in the design and conduct of the study; collection, management, analysis, and interpretation of the data;

preparation, review, or approval of the manuscript; or decision to submit the manuscript for publication.

Data availability The dataset analysed during the current study are available from the corresponding author on reasonable request.

Declarations

Conflict of interest The authors have no relevant financial or non-financial interests to disclose.

Ethical approval The study was approved by the Regional Committee for Medical Research Ethics, Health Region IV in Norway (REK Reference 2017-34), the Swedish Ethical Review Authority (D-nr 702-18), and the HUNT study board. The study was performed in line with the principles of the Declaration of Helsinki.

Consent to participate A waiver of informed consent was given for the patient population, while the control group provided written informed consent as part of the HUNT study.

Open Access This article is licensed under a Creative Commons Attribution 4.0 International License, which permits use, sharing, adaptation, distribution and reproduction in any medium or format, as long as you give appropriate credit to the original author(s) and the source, provide a link to the Creative Commons licence, and indicate if changes were made. The images or other third party material in this article are included in the article's Creative Commons licence, unless indicated otherwise in a credit line to the material. If material is not included in the article's Creative Commons licence and your intended use is not permitted by statutory regulation or exceeds the permitted use, you will need to obtain permission directly from the copyright holder. To view a copy of this licence, visit <http://creativecommons.org/licenses/by/4.0/>.

References

- Ostrom QT, Bauchet L, Davis FG, Deltour I, Fisher JL, Langer CE, Pekmezci M, Schwartzbaum JA, Turner MC, Walsh KM, Wrensch MR, Barnholtz-Sloan JS (2014) The epidemiology of glioma in adults: a “state of the science” review. *NeuroOncology* 16:896–913. <https://doi.org/10.1093/neuonc/nou087>
- Ostrom QT, Patil N, Cioffi G, Waite K, Kruchko C, Barnholtz-Sloan JS (2020) CBTRUS statistical report: primary brain and other central nervous system tumors diagnosed in the United States in 2013–2017. *Neuro Oncol*. <https://doi.org/10.1093/neuonc/noaa200>
- Pelvig DP, Pakkenberg H, Stark AK, Pakkenberg B (2008) Neocortical glial cell numbers in human brains. *Neurobiol Aging* 29:1754–1762. <https://doi.org/10.1016/j.neurobiolaging.2007.04.013>
- Fyllingen EH, Hansen TI, Jakola AS, Haberg AK, Salvesen O, Solheim O (2018) Does risk of brain cancer increase with intracranial volume? A population-based case-control study. *NeuroOncology*. <https://doi.org/10.1093/neuonc/nyy043>
- Low JT, Ostrom QT, Cioffi G, Neff C, Waite KA, Kruchko C, Barnholtz-Sloan JS (2022) Primary brain and other central nervous system tumors in the United States (2014–2018): a summary of the CBTRUS statistical report for clinicians. *Neurooncol Pract* 9:165–182. <https://doi.org/10.1093/nop/npac015>

6. Wang GM, Cioffi G, Patil N, Waite KA, Lanese R, Ostrom QT, Kruchko C, Berens ME, Connor JR, Lathia JD, Rubin JB, Barnholtz-Sloan JS (2022) Importance of the intersection of age and sex to understand variation in incidence and survival for primary malignant gliomas. *Neuro Oncol* 24:302–310. <https://doi.org/10.1093/neuonc/noab199>
7. Krokstad S, Langhammer A, Hveem K, Holmen TL, Midthjell K, Stene TR, Bratberg G, Heggland J, Holmen J (2013) Cohort Profile: the HUNT Study, Norway. *Int J Epidemiol* 42:968–977. <https://doi.org/10.1093/ije/dys095>
8. Håberg AK, Hammer TA, Kvistad KA, Rydland J, Müller TB, Eikenes L, Gårseth M, Stovner LJ (2016) Incidental intracranial findings and their clinical impact; the HUNT MRI study in a general population of 1006 participants between 50–66 years. *PLoS ONE* 11:e0151080. <https://doi.org/10.1371/journal.pone.0151080>
9. Louis DN, Perry A, Wesseling P, Brat DJ, Cree IA, Figarella-Branger D, Hawkins C, Ng HK, Pfister SM, Reifenberger G, Soffietti R, von Deimling A, Ellison DW (2021) The 2021 WHO classification of tumors of the central nervous system: a summary. *NeuroOncology* 23:1231–1251. <https://doi.org/10.1093/neuonc/noab106>
10. Hansen TI, Brezova V, Eikenes L, Håberg A, Vangberg TR (2015) How does the accuracy of intracranial volume measurements affect normalized brain volumes? Sample size estimates based on 966 subjects from the HUNT MRI Cohort. *AJNR. Am J Neuroradiol* 36:1450–1456. <https://doi.org/10.3174/ajnr.A4299>
11. Yushkevich PA, Piven J, Hazlett HC, Smith RG, Ho S, Gee JC, Gerig G (2006) User-guided 3D active contour segmentation of anatomical structures: significantly improved efficiency and reliability. *Neuroimage* 31:1116–1128. <https://doi.org/10.1016/j.neuroimage.2006.01.015>
12. Gunnell D, Okasha M, Smith GD, Oliver SE, Sandhu J, Holly JM (2001) Height, leg length, and cancer risk: a systematic review. *Epidemiol Rev* 23:313–342. <https://doi.org/10.1093/oxfordjournals.epirev.a000809>
13. Posthuma D, de Geus EJ, Neale MC, Hulshoff Pol HE, Baaré WEC, Kahn RS, Boomsma D (2000) Multivariate genetic analysis of brain structure in an extended twin design. *Behav Genet* 30:311–319. <https://doi.org/10.1023/a:1026501501434>
14. Adams HH, Hibar DP, Chouraki V, Stein JL, Nyquist PA, Rentería ME et al (2016) Novel genetic loci underlying human intracranial volume identified through genome-wide association. *Nat Neurosci* 19:1569–1582. <https://doi.org/10.1038/nn.4398>
15. Ahn S, Han K, Lee JE, Jeun SS, Park YM, Joo W, Yang SH (2021) Association between height and the risk of primary brain malignancy in adults: a nationwide population-based cohort study. *Neurooncol Adv*. <https://doi.org/10.1093/oaajnl/vdab098>
16. Tschernichovsky R, Katz LH, Derazne E, Berliner MB, Simchoni M, Levine H, Keinan-Boker L, Benouaich-Amiel A, Kanner AA, Laviv Y, Honig A, Dudnik E, Siegal T, Mandel J, Twig G, Yust-Katz S (2021) Height in adolescence as a risk factor for glioma subtypes: a nationwide retrospective cohort study of 2.2 million subjects. *NeuroOncology* 23:1383–1392. <https://doi.org/10.1093/neuonc/noab049>
17. Wiedmann MKH, Brunborg C, Di Ieva A, Lindemann K, Johannesen TB, Vatten L, Helseth E, Zwart JA (2017) The impact of body mass index and height on the risk for glioblastoma and other glioma subgroups: a large prospective cohort study. *NeuroOncology* 19:976–985. <https://doi.org/10.1093/neuonc/now272>
18. Tomasetti C, Vogelstein B (2015) Cancer etiology. Variation in cancer risk among tissues can be explained by the number of stem cell divisions. *Science* 347:78–81. <https://doi.org/10.1126/science.1260825>
19. Pintzka CW, Hansen TI, Evensmoen HR, Håberg AK (2015) Marked effects of intracranial volume correction methods on sex differences in neuroanatomical structures: a HUNT MRI study. *Front Neurosci* 9:238. <https://doi.org/10.3389/fnins.2015.00238>
20. Nunney L, Thai K (2020) Determining cancer risk: the evolutionary multistage model or total stem cell divisions? *Proc Biol Sci* 287:20202291. <https://doi.org/10.1098/rspb.2020.2291>
21. Melin BS, Barnholtz-Sloan JS, Wrensch MR, Johansen C, Il'yasova D, Kinnersley B et al (2017) Genome-wide association study of glioma subtypes identifies specific differences in genetic susceptibility to glioblastoma and non-glioblastoma tumors. *Nat Genet* 49:789–794. <https://doi.org/10.1038/ng.3823>
22. Eckel-Passow JE, Decker PA, Kosel ML, Kollmeyer TM, Molinaro AM, Rice T et al (2019) Using germline variants to estimate glioma and subtype risks. *Neuro Oncol*. <https://doi.org/10.1093/neuonc/noz009>
23. Tomasetti C, Poling J, Roberts NJ, London NR Jr, Pittman ME, Haffner MC, Rizzo A, Baras A, Karim B, Kim A, Heaphy CM, Meeker AK, Hruban RH, Iacobuzio-Donahue CA, Vogelstein B (2019) Cell division rates decrease with age, providing a potential explanation for the age-dependent deceleration in cancer incidence. *Proc Natl Acad Sci U S A* 116:20482–20488. <https://doi.org/10.1073/pnas.1905722116>
24. von Bartheld CS, Bahney J, Herculano-Houzel S (2016) The search for true numbers of neurons and glial cells in the human brain: a review of 150 years of cell counting. *J Comp Neurol* 524:3865–3895. <https://doi.org/10.1002/cne.24040>
25. Courchesne E, Chisum HJ, Townsend J, Cowles A, Covington J, Egaas B, Harwood M, Hinds S, Press GA (2000) Normal brain development and aging: quantitative analysis at in vivo MR imaging in healthy volunteers. *Radiology* 216:672–682. <https://doi.org/10.1148/radiology.216.3.r00au37672>

Publisher's Note Springer Nature remains neutral with regard to jurisdictional claims in published maps and institutional affiliations.