

Research article

Open Access

The prognostic relevance of interactions between venous invasion, lymph node involvement and distant metastases in renal cell carcinoma after radical nephrectomy

Dragomir P Zubac*¹, Leif Bostad², Tomas Seidal³, Tore Wentzel-Larsen⁴ and Svein A Haukaas^{1,5}

Address: ¹Department of Surgical Sciences, University of Bergen, Norway, ²Department of Pathology, Haukeland University Hospital, Bergen, Norway, ³Department of Pathology, Central Hospital, Karlstad, Sweden, ⁴Center for Clinical Research, Haukeland University Hospital, Bergen, Norway and ⁵Department of Surgery, Section of Urology, Haukeland University Hospital, Bergen, Norway

Email: Dragomir P Zubac* - zubac.dragomir2423@gmail.com; Leif Bostad - leif.bostad@helse-bergen.no; Tomas Seidal - tomas.seidal@lthalland.se; Tore Wentzel-Larsen - tore.wentzel-larsen@helse-bergen.no; Svein A Haukaas - svein.haukaas@helse-bergen.no

* Corresponding author

Published: 19 December 2008

Received: 8 September 2008

BMC Urology 2008, 8:19 doi:10.1186/1471-2490-8-19

Accepted: 19 December 2008

This article is available from: <http://www.biomedcentral.com/1471-2490/8/19>

© 2008 Zubac et al; licensee BioMed Central Ltd.

This is an Open Access article distributed under the terms of the Creative Commons Attribution License (<http://creativecommons.org/licenses/by/2.0>), which permits unrestricted use, distribution, and reproduction in any medium, provided the original work is properly cited.

Abstract

Background: To investigate a possible prognostic significance of interactions between lymph node invasion (LNI), synchronous distant metastases (SDM), and venous invasion (VI) adjusted for mode of detection, Eastern Cooperative Oncology Group performance status (ECOG PS), erythrocyte sedimentation rate (ESR) and tumour size (TS) in 196 patients with renal cell carcinoma treated with radical nephrectomy.

Methods: Median follow-up was 5.5 years (mean 6.9 years; range 0.01–19.4). The mode of detection, ECOG PS, ESR and TS were obtained from the patients' records. Vena cava invasion and distant metastases were detected by preoperative imaging. The surgical specimens were examined for pathological stage, LNI and VI.

Results: The univariate analyses showed significant impact of VI, LNI, SDM, ESR and TS ($p < 0.001$), as well as mode of detection ($p = 0.003$) and ECOG PS ($p = 0.002$) on cancer specific survival. In multivariate analyses LNI was significantly associated with survival only in patients without SDM or VI ($p < 0.001$) with a hazard ratio of 9.0. LNI lost its prognostic significance when SDM or VI was present.

Conclusion: Our findings underline the prognostic importance of the status of the lymph nodes. LNI, SDM, ESR, and VI were independently associated with cancer specific survival after radical nephrectomy. LNI provided the strongest prognostic information for patients without SDM or VI whereas SDM and VI had strongest impact on survival when there was no nodal involvement.

Background

Renal cell carcinoma (RCC) is the third most common genitourinary malignancy and accounts for 3% of cancer

in adults. About 25% of patients with RCC present with metastatic disease; either lymph node infiltration, simultaneous distant metastases or both [1].

The wide application of imaging modalities has increased the incidental detection of RCC and changed its natural history over the last two decades. However, it has been difficult to find reliable prognostic factors particularly for locally advanced and metastatic RCC. The prognostic value of mode of presentation and Eastern Cooperative Oncology Group performance status (ECOG PS) in RCC have been controversial in earlier studies [2,3]. Even though ECOG PS and symptoms at presentation were of independent prognostic significance, the combination of those two variables in prognostic models did not improve the capability to predict RCC specific mortality [3]. The contribution of tumour size (TS), erythrocyte sedimentation rate (ESR) and venous invasion (VI) in prediction of prognosis have been a matter of debate in several studies [2,4-7]. According to recent studies the presence but not the extent of venous invasion was independently correlated with the cancer-specific survival [8,9].

One of the most important prognostic factors in RCC is lymph node invasion (LNI). However, the prognostic discrimination between pN1 and pN2 categories in the 2002 TNM system has been questioned. A recent study concludes that the percentage of positive nodes and a threshold number of four rather than one positive lymph node correlated significantly with clinical outcome [10]. The appropriateness of the pNx/pN0 grouping and prognostic relevance in a multivariate setting has also been discussed [11].

To our knowledge the possible impact on cancer specific survival (CSS) of interactions between LNI, synchronous distant metastases (SDM) and VI have not yet been fully studied. We hypothesized that putatively significant interactions between these variables could contribute in prediction of outcome for patients with RCC after radical nephrectomy.

To test this hypothesis we examined the relationship between cancer specific survival and LNI, SDM, and VI, including possible interactions between these variables, with adjustment for mode of detection, Eastern Cooperative Oncology Group performance status, erythrocyte sedimentation rate and continuously coded tumour size.

Methods

Patients

The patient material in this retrospective and population-based series is described in detail elsewhere [12]. Briefly, a total of 196 consecutive patients who underwent radical nephrectomy for renal cell carcinoma during the years 1985 to 1994 were included in the study. Tumour staging was done according to the 2002 TNM classification system using the American Joint Committee on Cancer (AJCC) stage grouping [13].

All patients were given a thorough clinical examination preoperatively, including imaging techniques. Bone scans were performed in those with symptoms and signs of skeletal involvement. When a thrombus of the inferior vena cava was suspected, both ultrasound and an inferior cavogram were done in order to better define the thrombus level.

Approval to use the biological material for research purposes was granted in 2004 by the local authority at Karlstad Central Hospital in Sweden according to Swedish regulations. In Norway the appropriate Norwegian authority, Norwegian Social Science Data Services, recognized this approval. The study was carried out in accordance with the standards of World Medical Association Declaration of Helsinki as revised in 2008.

Treatment

Standard radical nephrectomy was done in all patients. A thrombus of the vena cava was found in 15 patients and treated with cavotomy and thrombectomy. The clinical lymph node staging was performed based on preoperative CT images of the abdomen and/or the peroperative findings. In cases with enlarged or palpable lymph nodes between the aorta and vena cava or other sites, additional lymph node dissection was done. Extensive radical retroperitoneal lymph node dissection was not performed. Only 14 of the surgical specimens had a sufficient number of negative nodes (eight) to be classified as pN0 category. Accordingly 161 of the patients were pNx (clinically N0).

Methods

Clinical information regarding age, sex, Eastern Cooperative Oncology Group performance status [14], erythrocyte sedimentation rate obtained preoperatively according to the Westergren method (reference interval: <28 mm/h) [15,16], metastases and final disease status were extracted from the patient's clinical records.

According to the mode of detection patients were classified in two groups: incidental and symptomatic. Tumours diagnosed during abdominal imaging studies for signs and symptoms unrelated to RCC were classified as incidental.

The clinical records and pathology reports were reviewed to determine stage, size and type of the primary tumour. Continuously coded tumour size (CCTS) was used in all analyses and given in cm by measuring the greatest diameter. The nephrectomy specimens were examined histopathologically in a uniform manner. Histological examination included searching for invasion of the tumour into perinephric or peripelvic fat, any possible involvement of the adrenals or spread beyond Gerota's fascia. Careful examination of the regional lymph nodes

was done. One urologic pathologist (LB) performed the histological subtyping of the RCC according to the Heidelberg classification guidelines [17]. Venous invasion was registered as no venous invasion (pV0), renal vein invasion (RVI) (pV1) or vena cava invasion (VCI) (pV2) and dichotomised (pV0 vs. pV1+pV2) in all except descriptive analyses, for compatibility with most previous reports. RVI was diagnosed when there was invasion by tumour of major extra renal veins found microscopically in transverse slices of the vein. In patients with VCI, the tumour thrombus did not adhere to the intima of the vena cava.

Follow-up

The postoperative clinical follow-up was done at each hospital according to established protocols, including clinical and radiological examination at regular intervals for a median of 3 years (range 0.1–11.5). Information of local recurrence, metastases and final status were extracted from hospital files or from information obtained by contacting the local general practitioners. The cause of death was determined from clinical records and death certificates. Deaths from other causes than RCC were censored. We obtained information of surviving patients by searching The Swedish Updated Population Register and by contacting the local general practitioners (GPs). The clinical status was complete up to 30 April 2004 when the study was ended. Thus, the patients could be assigned a date of death or identified as being alive with or without diagnosed recurrent disease. Median and mean follow up period for the whole population studied was 5.5 years and 6.9 years (range 0.01–19.4), respectively. Median follow up was 13.9 years for patients alive at the end of the study.

Statistical procedures

Preliminary analyses included descriptive statistics and assessment of associations of LNI, SDM and VI with TS, presenting symptoms and ECOG PS, by cross tabulations, with exact χ^2 -, linear by linear association or Mann-Whitney tests. The relationships of CSS to LNI, SDM and VI were investigated by multiple Cox regression analysis for CSS, including all two-way interactions and adjusting for ESR, CCTS (continuously coded), presenting symptoms and ECOG PS. All statistical analyses were accomplished in SPSS 14.0 (SPSS Inc., Chicago, USA). All tests were two-sided with a significance level at 0.05.

Results

Predictive factors

The clinicopathological characteristics of the 196 patients in the study are detailed in Table 1. In the symptomatic group the leading symptom was haematuria in 64, weight loss associated with asthenia 14, or flank pain 42. Abnormal blood tests like elevated erythrocyte sedimentation rate, anemia or elevated haemoglobin were the main

causes for detection of RCC in 25, 8 and 2 patients, respectively. At presentation 45 patients harboured distant metastases and about three quarters had metastases in multiple sites; the most frequent sites were lungs (24 patients), the skeleton (10), the liver (5), the brain or the spine (4) and other sites (14).

Lymph node invasion was diagnosed in 21 of 196 patients of whom 16 had SDM. In ten patients with LNI there was also venous invasion. Of 15 patients with vena cava invasion seven patients had SDM and six had regional local lymph node metastases. Venous invasion carried a significantly higher risk for having SDM ($p = 0.003$) as well as LNI ($p = 0.014$). Such patients also had a significantly higher rate of lung metastases as 16 patients with VI had lung metastases as compared to 9 patients without VI ($p < 0.001$). Additionally, venous invasion was significantly associated with tumour size ($p < 0.001$).

Univariate analyses

As depicted in Table 2 factors such as age and gender were not associated with CSS. The mode of presentation and performance status was significant prognostic variables ($p = 0.003$ and $p = 0.002$, respectively). High ESR and large TS were inversely related to survival ($p < 0.001$). LNI, SDM and VI were also significantly related to CSS ($p < 0.001$) with hazard ratios of 5.4, 6.6 and 2.3, respectively.

Multivariate analyses

In multivariate Cox regression analysis, only LNI, SDM, VI and ESR remained independent prognostic factors (Table 3). Lymph node metastases had a significant impact on CSS only for patients in whom neither distant metastases nor venous invasion were present. In patients without lymph node metastases, we were able to define prognostic subgroups of patients based on multivariate analysis by including different combinations of SMD and VI.

A Kaplan-Meier analysis of CSS in node positive, as well as four combinations of SDM and VI in node negative patients is depicted in Figure 1.

Discussion and conclusion

This long-term, population-based study is including consecutively operated patients with RCC from a well-defined region in Sweden. Even though the number of patients in the study is limited, it consists of a complete cohort of RCC patients as very few patients were referred out of the region for operation. The limitation of the study is its retrospective design and the enrolment of patients who underwent radical nephrectomy for RCC in the period 1985 to 1994. Since then more tumours are detected incidentally and the standard of care has changed. However, the proportion of incidentally detected RCC in the present study is similar to contemporary series [18,19]. Also, the

Table 1: Clinical and pathologic features in 196 patients with renal cell carcinoma.

Features	Clear cell carcinoma	Papillary carcinoma	All subtypes ^a
No. of cases	172 (87.8)	19 (9.7)	196 (100)
Mean age (years)	66.6	62.4	66.4
Gender n Male/Female	95/77	13/6	110/86 (56.1)
Pathologic tumour size (cm) Median (range)	7.0 (1.5 – 26.0)	8 (3.0–20.0)	7 (1.5 – 26.0)
Mode of presentation Symptomatic/Incidental	144/28	17/2	165/31 (84.2)
ECOG performance status:			
0	109 (63.4)	12 (63.2)	125 (63.8)
1	52 (30.2)	6 (31.6)	58 (29.6)
2	11 (6.4)	1 (5.3)	13 (6.6)
ESR			
< 28 mm	88 (51.2)	10 (52.5)	103 (52.6)
≥ 28 mm	84 (48.8)	9 (47.3)	95 (48.5)
RCC Stage groups (TNM, 2002)			
I	52 (30.2)	7 (36.8)	62 (31.6)
II	24 (14.0)	5 (26.3)	29 (14.8)
III	48 (27.9)	3 (15.8)	53 (27.0)
IV	48 (27.9)	4 (21.1)	52 (27.0)
Primary pathological tumour stage (pT, 2002)			
pT1a	18 (10.5)	3 (15.8)	22 (11.2)
pT1b	39 (22.7)	5 (26.3)	46 (23.5)
pT2	28 (16.3)	6 (31.6)	34 (17.3)
pT3a	28 (16.3)	0 (0)	29 (14.8)
pT3b	48 (28.0)	5 (26.3)	54 (27.6)
pT3c	0 (0)	0 (0)	0 (0)
pT4	11 (6.4)	0 (0)	11 (5.6)
Pathologic stage of lymph nodes (N, 2002)			
pN x	141 (82.0)	15 (79.0)	161 (82.1)
pN 0	14 (8.1)	0 (0)	14 (7.1)
pN 1	10 (5.8)	2 (11.0)	12 (6.1)
pN 2	7 (4.1)	2 (11.0)	9 (4.6)
SDM (M, 2002)			
M 0	131 (76.1)	15 (79.0)	151 (77.0)
M + (single)	9 (5.2)	1 (5.3)	10 (5.1)
M + (multiple)	32 (18.6)	3 (15.8)	35 (17.9)
Venous invasion (VI = pV1+pV2)			
pV 0	122 (70.9)	14 (73.7)	140 (71.4)
pV 1 (renal vein)	36 (20.9)	4 (21.1)	41 (20.9)
pV 2 (vena cava)	14 (8.1)	1 (5.3)	15 (7.7)

Unless stated otherwise, values shown represent numbers of patients, with percentages in parentheses.

^aIncluding chromophobic carcinoma (n = 5)

Table 2: Univariate analysis of cancer specific survival related to clinicopathological variables in 196 patients operated with radical nephrectomy for renal cell carcinoma.

UNIVARIATE ANALYSIS	Cancer specific survival		p-value
	HR	95% CI	
Primary pathological tumour stage (pT, 2002)			
pT1a ref.			
pT1b	5.5	0.7 – 42.7	0.102
pT2	11.5	1.5 – 87.6	0.018
pT3a	16.3	2.2 – 123.5	0.007
pT3b	21.5	2.9 – 157.1	0.003
pT4	63.5	8.1 – 498.2	<0.001
Gender male ref.	0.74	0.48 – 1.14	0.170
Age (continuous), per 5 years	1.01	0.91 – 1.11	0.908
Continuously coded tumour size (CCTS), per 10 cm	2.98	1.87 – 4.75	<0.001
Mode of detection (Incidental vs. Symptomatic)	3.89	1.58 – 9.59	0.003
ECOG PS (≥ 1 vs. 0)	1.94	1.26 – 2.98	0.002
ESR (≥ 28 mm vs. < 28 mm)	3.36	2.11 – 5.35	<0.001
LNI (pN 1/2 vs. pN \times /0)	5.38	3.17 – 9.10	<0.001
SDM (M + vs. M 0)	6.56	4.17 – 10.33	<0.001
VI (pV 1/2 vs. pV 0)	2.33	1.51 – 3.60	<0.001

size of the data set limited the number of adjustment variables that could be included in the multivariate survival model. The results of this model are, however, largely confirmed by a simple Kaplan-Meier analysis. Also, as a sensitivity analysis we have re-run the model including pTstage (1–2 vs. 3–4). Generally, the contrasts between LNI, VI and SDM categories were not considerably different in this enlarged model (data not shown).

The strength of the study is its long-term follow-up and the high quality of follow-up data that were obtained from institutions providing health service, local GPs or population register.

The symptoms of RCC at presentation have been associated with poor outcome [3,18,20]. In univariate analysis we did find a survival advantage in favour of incidentally detected RCC compared with symptomatic RCC. However, in keeping with the findings of Ishimura et al. [20] and Gudbjartsson et al. [21], the independent prognostic significance of mode of presentation was not confirmed in multivariate analysis. In agreement with other studies, [4,22] we found that elevated ESR at presentation was associated with more aggressive disease and poorer outcome for both clear cell and papillary RCC (data not

shown). Contrary to the study of Sengupta et al. [4] the frequency of elevated ESR among our patients was not significantly different between these two histological subtypes.

In general, distant metastases at operation have a profound adverse impact on survival after radical nephrectomy for RCC. However, some patients with SDM have a more indolent disease course after radical nephrectomy and are expected to survive for more than five years. In our study 10% of patients were alive after seven years of follow-up. The patients with metastases in lung or bone had a poorer prognosis than those with metastases limited to other organs. The lung was the most prevalent site of metastases in one third of the patients in whom the tumour invaded the renal veins or the vena cava. Confirming the findings of Ljungberg et al. [6] and Zisman et al [23], these studies are lending support to the notion that most metastases in such patients probably develop haematogenous rather than through the lymphatic system.

Lymph node invasion has been shown in several studies to adversely affect the survival after nephrectomy for RCC [7,23–25]. The reported incidence of LNI among patients treated with radical nephrectomy and lymph node dissec-

Table 3: Multivariate survival analysis of interactions between clinicopathological variables and cancer specific survival in 196 patients operated with radical nephrectomy for renal cell carcinoma.

MULTIVARIATE ANALYSES	Cancer specific survival		
	HR	95% CI	p-value
Lymph Node Involvement present			
VI present, SDM present	0.55	0.23 – 1.30	0.173
VI present, SDM absent	2.78	0.80 – 9.64	0.108
VI absent, SDM present	1.77	0.74 – 4.21	0.197
VI absent, SDM absent	8.96	3.27 – 24.56	<0.001
Venous invasion present			
LNI present	0.63	0.25 – 1.64	0.349
LNI absent	2.05	1.22 – 3.43	0.006
Synchronous distant metastases present			
LNI present	0.93	0.32 – 2.74	0.894
LNI absent	4.71	2.68 – 8.27	<0.001
CCTS (Tumour size per 10 cm)	1.49	0.75 – 2.95	0.256
ESR (≥ 28 mm vs. <28 mm ref.)	1.94	1.15 – 3.26	0.012
ECOG PS (≥ 1 vs. 0)	1.47	0.93 – 2.33	0.099
Mode of detection (Symptomatic vs. Incidental)	0.66	0.25 – 1.71	0.392

tion is varying from 3.3% to 14.2% [23,26] depending on the study population and the time period. In the era of modern imaging techniques, the incidence of positive lymph nodes has decreased to 3% to 5%. In the present series, 21 patients (10.7%) had lymph node metastases. The relatively high incidence of positive nodes is reflecting the patient selection as 45 patients with SDM underwent radical nephrectomy. Three quarters of the node positive patients had synchronous distant metastases, which are in line with the findings of an autopsy study [27]. Patients harbouring lymph node metastases had a sinister prognosis and in these patients the presence or absence of SDM and VI did not influence the outcome. However, in lymph node negative patients we were able to define subgroups with significant different survival according to presence and absence of SDM or VI or both. Patients with tumour invasion of the vena cava or the renal veins as the only adverse feature had a significantly longer survival than those with only distant metastases. Nesbitt et al. [24] and Tsuji et al. [25] reported that in patients operated for RCC with thrombus in the vena cava, distant metastases at the time of operation did not significantly decrease the survival for those who were node negative whereas patients with lymph node metastases had a significant shorter survival. Ljungberg et al. [6] performed preoperative staging and no extensive lymph node dissection and reported a significantly shorter CSS of patients with SDM and VI compared with those with SDM only. However, it remains

unclear whether the status of the lymph nodes was included in the analysis.

Only few studies have analysed survival by comparing N1/N2M1 and N0M1 disease; most patients with M1 disease are grouped together regardless of lymph node status. In the multivariate analysis of interactions of SMD, VI and LNI on survival, LNI showed a significant impact on survival only for the patients in whom we found no distant metastases or venous invasion. In this subgroup of patients there was a hazard ratio of 9.0 for later death of RCC. This finding implies that once RCC has spread to the lymphatic system the risk of haematogenous spread to other regions is high, and it is likely that few patients would benefit from an extensive lymph node dissection. In accordance with other reports, the impact of VI on survival was highest for patients free from nodal and distant metastases, and was insignificant in patients with both LNI and SDM [7,28].

Our findings underline the prognostic importance of the status of the lymph nodes. LNI, SDM, ESR, and VI were independently associated with CSS after radical nephrectomy. LNI provided the strongest prognostic information for patients without SDM or VI whereas SDM and VI had strongest impact on survival when there was no nodal involvement. These findings imply that once RCC has spread to the lymphatic system the risk of haematogenous

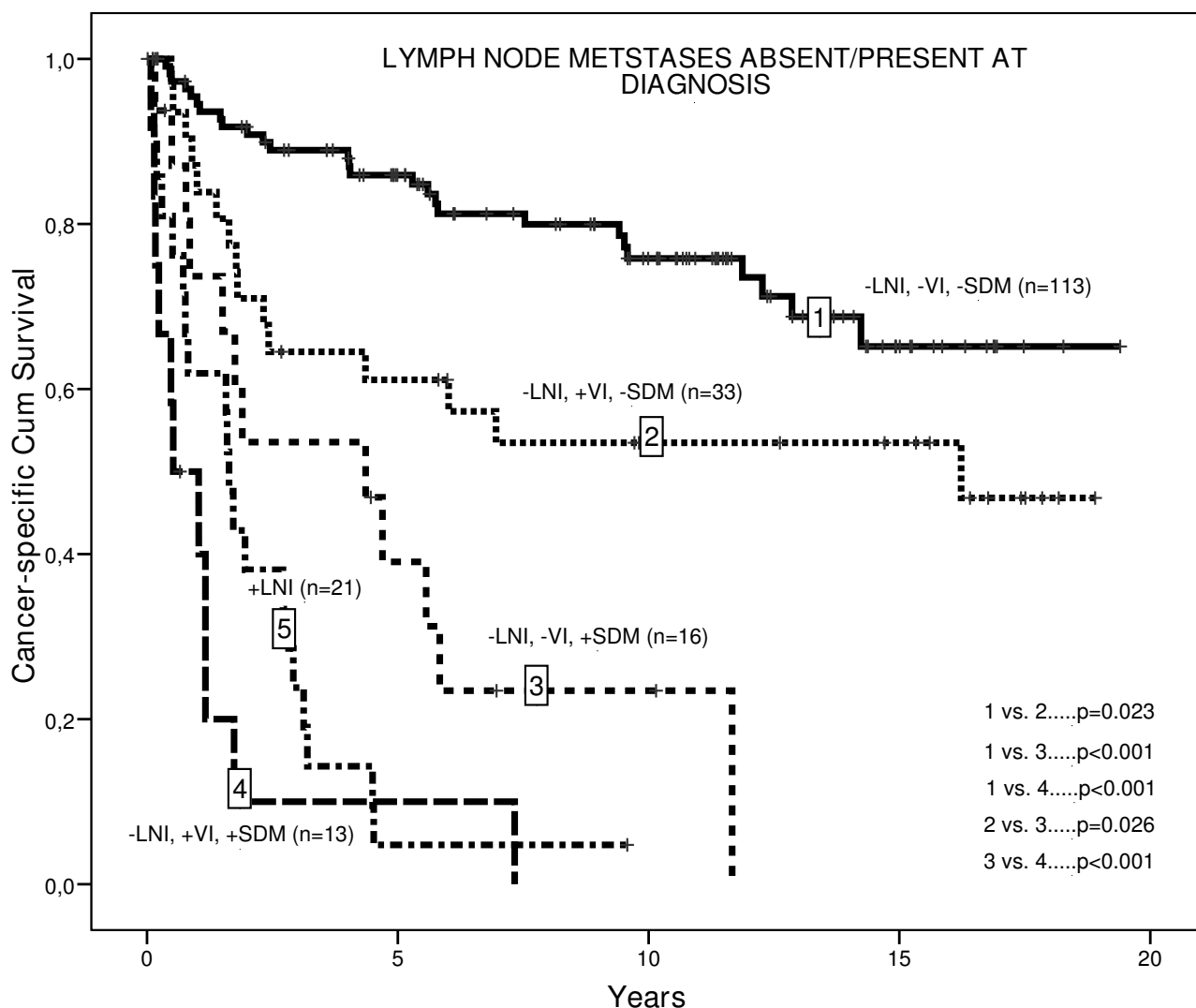


Figure 1
Kaplan-Meier analyses of cancer specific survival in 175 lymph node negative renal cell carcinoma patients by different combinations of synchronous distant metastases (SDM) and venous invasion (VI) and in 21 patients with lymph node positive renal cell carcinoma.

spread to other regions is high and it is likely that few patients would benefit from extensive lymph node dissection.

Competing Interests

The authors declare that they have no competing interests.

Authors' contributions

DPZ conceived the study, carried out acquisition of data, participated in analysis and wrote the manuscript. LB and TS carried out the pathohistological analysis of tumour specimens and have been involved in drafting and revising the manuscript. TWL performed the statistical analysis

and interpretation of data and contributed to the study design. SAH participated in the design of the study, have been involved in drafting and revising the manuscript critically for important intellectual content. All authors read and approved the final manuscript.

Acknowledgements

The authors thank Dr Torunn Søland for contributing to the collection of the follow up data.

References

1. Pantuck AJ, Zisman A, Dorey F, Chao DH, Han K, Said J, Gitlitz BJ, Belldégrun AS, Figlin RA: **Renal cell carcinoma with retroperitoneal lymph nodes. Impact on survival and benefits of immunotherapy.** *Cancer* 2003, **97**:2995-3002.

2. Frank I, Blute ML, Cheville JC, Lohse CM, Weaver AL, Zincke H: **An outcome prediction model for patients with clear cell renal cell carcinoma treated with radical nephrectomy based on tumour stage, size, grade and necrosis: The SSIGN score.** *J Urol* 2002, **168**:2395-400.
3. Karakiewicz PI, Trinh Q-D, Taille A, Abbou CC, Salomon L, Tostain J, Cindolo L, Artibani W, Ficarra V, Patard JJ: **ECOG performance status 0 or 1 and symptom classification do not improve the ability to predict renal cell carcinoma-specific survival.** *Euro J Cancer* 2007, **43**:1023-1029.
4. Sengupta S, Lohse CM, Cheville JC, Leibovich BC, Thompson RH, Webster WS, Frank I, Zincke H, Blute M, Kwon ED: **The preoperative erythrocyte sedimentation rate is an independent prognostic factor in renal cell carcinoma.** *Cancer* 2005, **106**:304-12.
5. Giuliani L, Giberti C, Martorana G, Rovida S: **Radical extensive surgery for renal cell carcinoma: Long term results and prognostic factors.** *J Urol* 1990, **143**:468-74.
6. Ljungberg B, Stenling R, Osterdahl B, Farrelly E, Åberg T, Roos G: **Vein invasion in renal cell carcinoma: impact on metastatic behaviour and survival.** *J Urol* 1995, **154**:1681-4.
7. Giberti C, Oneto F, Martorana G, Rovida S, Carmignani G: **Radical nephrectomy for renal cell carcinoma: long-term results and prognostic factors on a series of 328 cases.** *Eur Urol* 1997, **31**(1):40-48.
8. Blute ML, Leibovich BC, Lohse CM, Cheville JC, Zincke H: **The Mayo Clinic experience with surgical management, complications and outcome for patients with renal cell carcinoma and venous tumour thrombus.** *BJU Int* 2004, **94**:33-41.
9. Margulius V, Tamboli P, Matin SF, Meisner M, Swanson DA, Wood CG: **Redefining pT3 renal cell carcinoma in the modern era. A proposal for a revision of the current TNM primary tumor classification system.** *Cancer* 2007, **109**:2439-44.
10. Terrone C, Cracco C, Porpiglia F, Bollito E, Scoffone C, Poggio M, Berruti A, Ragni F, Cossu M, Scarpa RM, Rossetti SR: **Reassessing the current TNM lymph node staging for renal cell carcinoma.** *Eur Urol* 2006, **49**(2):324-331.
11. Ward JF, Blute ML, Cheville JC, Lohse CM, Weaver AL, Horst Z: **The influence of pNx/pN0 grouping in a multivariate setting for outcome modelling in patients with clear cell renal cell carcinoma.** *J Urol* 2002, **168**:56-60.
12. Zubac DP, Bostad L, Gestblom C, Kihl B, Seidal T, Wentzel-Larsen T, Bakke AM: **Renal cell carcinoma: A clinicopathological follow-up study after radical nephrectomy.** *Scand J Urol Nephrol* 2007, **41**(3):191-7.
13. Greene FL, Page DL, Fleming ID, Fritz A, Balch CM, Haller DG: **AJCC cancer staging manual, 6th edition.** New York: Springer-Verlag; 2002:323-8.
14. Oken NM, Creech RH, Tormey DC, Horton J, Davis TE, McFadden ET, Carbone PP: **Toxicity and response criteria of the Eastern Cooperative Oncology Group.** *Am J Clin Oncol* 1982, **5**(6):649-55.
15. Koepke JA, Bull BS, Simson E, van Assendelft OW: **National Committee for Clinical Laboratory Standards. Reference and selected procedure for erythrocyte sedimentation rate (ESR) test; approved standard-fourth edition.** *Wane, Pennsylvania, USA* 2000, **20**(27):.
16. Plebani M, Piva E: **Erythrocyte sedimentation rate. Use of fresh blood for quality control.** *Am J Clin Pathol* 2002, **117**:621-626.
17. Kovacs G, Akhtar M, Beckwith BJ, Bugert P, Cooper CS, Delahunt B, Eble JN, Fleming S, Ljungberg B, Medeiros J, Moch H, Reuter VE, Ritz E, Roos G, Schmidt D, Srigley JR, Störkel S, Berg E Van Der, Zbar B: **The Heidelberg classification of renal cell tumours.** *J Pathol* 1997, **183**:131-3.
18. Tsui K, Shvarts O, Smith RB, Figlin R, Dekernion DB, Beldegrun A: **Renal cell carcinoma: prognostic significance of incidentally detected tumours.** *J Urol* 2000, **163**:426-430.
19. Sweeney JP, Thornhill JA, Grainger R, McDermott TED, Butler MR: **Incidentally detected renal cell carcinoma: pathological features, survival trends and implications for treatment.** *Br J Urol* 1996, **78**:351-353.
20. Ishimura T, Sakai I, Harada K, Hara I, Eto H, Miyake H: **Clinicopathological features of recurrence after radical surgery for non-metastatic renal cell carcinoma.** *Int J Clin Oncol* 2004, **9**:369-372.
21. Gudbjartsson T, Thoroddsen A, Petursdottir V, Hardarson G, Magnússon J, Einarsson GV: **Effect of incidental detection for survival of patients with renal cell carcinoma: results of population-based study of 701 patients.** *Urology* 2005, **66**:1186-1191.
22. Miyata Y, Koga S, Nishikido M, Nishikido M, Kanda S, Hayashi T, Saito Y, Kanetake H: **Predictive values of acute phase reactants, basic fetoprotein, and immunosuppressive acidic protein for staging and survival in renal cell carcinoma.** *Urology* 2001, **58**:161-164.
23. Zisman A, Wieder JA, Pantuck AJ, Chao DH, Dorey F, Said JW, Gitlitz BJ, deKernion JB, Figlin RA, Beldegrun AS: **Renal cell carcinoma with tumour thrombus extension: biology, role of nephrectomy and response to immunotherapy.** *J Urol* 2003, **169**(3):909-16.
24. Nesbitt JC, Soltero ER, Dinney CPN, Walsh GL, Schrupp DS, Swanson DA, Pisters LL, Willis KD, Putnam JB: **Surgical management of renal cell carcinoma with inferior vena cava tumour thrombus.** *Ann Thorac Surg* 1997, **63**:1592-600.
25. Tsuji Y, Goto A, Hara I, Ataka K, Yamashita C, Okita Y, Kamidono S: **Renal cell carcinoma with the extension of tumour thrombus into the vena cava: Surgical strategy and prognosis.** *J Vasc Surg* 2001, **33**:789-96.
26. Blom JH, van Poppel H, Marrechal JM, Jacqmin D, Sylvester R, Schroder FH, de Prieck L: **Radical nephrectomy with and without lymph node dissection: preliminary results of the EORTC randomized phase III protocol 30881. EORTC Genitourinary Group.** *Eur Urol* 1999, **36**(6):570-5.
27. Johnsen JA, Hellsten S: **Lymphatogenous spread of renal cell carcinoma: An autopsy study.** *In J Urol Volume 157. Issue 2* Edited by: Donohue JP. Oxford: isis Medical Media; 1995:31-34.
28. Canfield SE, Kamat AM, Sanchez-Oritz RF, Detry M, Swanson DA, Wood CG: **Renal cell carcinoma with nodal metastases in the absence of distant metastases (clinical stage TxN1/M0): the impact of aggressive surgical resection on patient outcome.** *J Urol* 2006, **175**:864-9.

Pre-publication history

The pre-publication history for this paper can be accessed here:

<http://www.biomedcentral.com/1471-2490/8/19/prepub>

Publish with **BioMed Central** and every scientist can read your work free of charge

"BioMed Central will be the most significant development for disseminating the results of biomedical research in our lifetime."

Sir Paul Nurse, Cancer Research UK

Your research papers will be:

- available free of charge to the entire biomedical community
- peer reviewed and published immediately upon acceptance
- cited in PubMed and archived on PubMed Central
- yours — you keep the copyright

Submit your manuscript here:
http://www.biomedcentral.com/info/publishing_adv.asp

